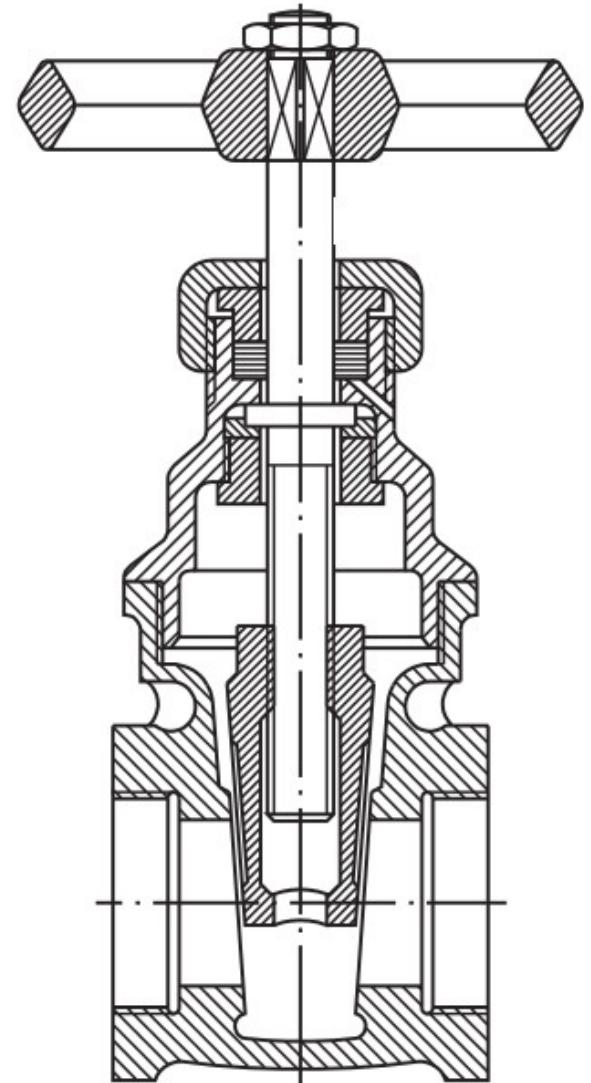
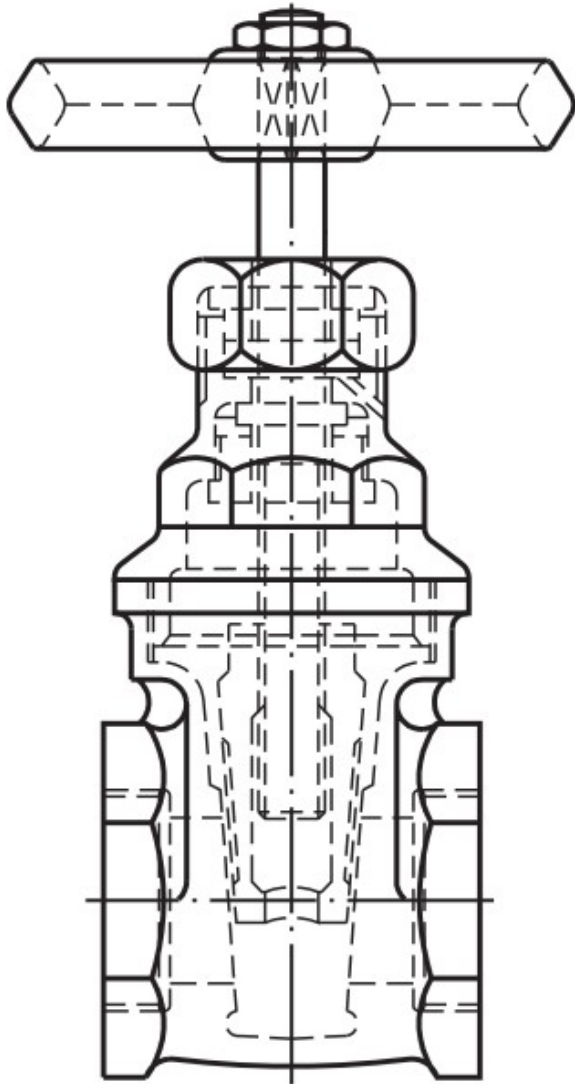




Projeto e Computação Gráfica

Pedro Mitsuo Shiroma

Cortes





Cortes

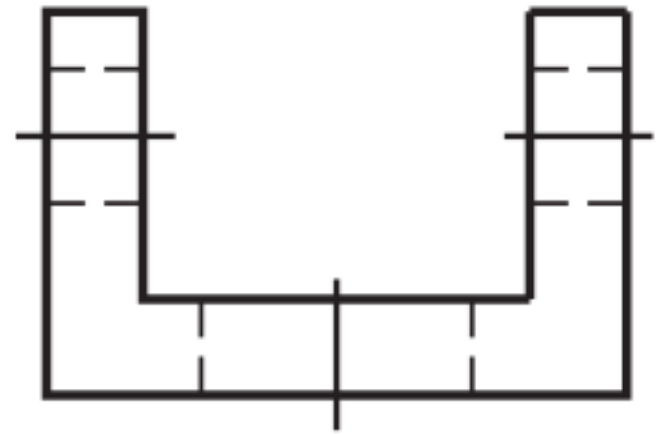
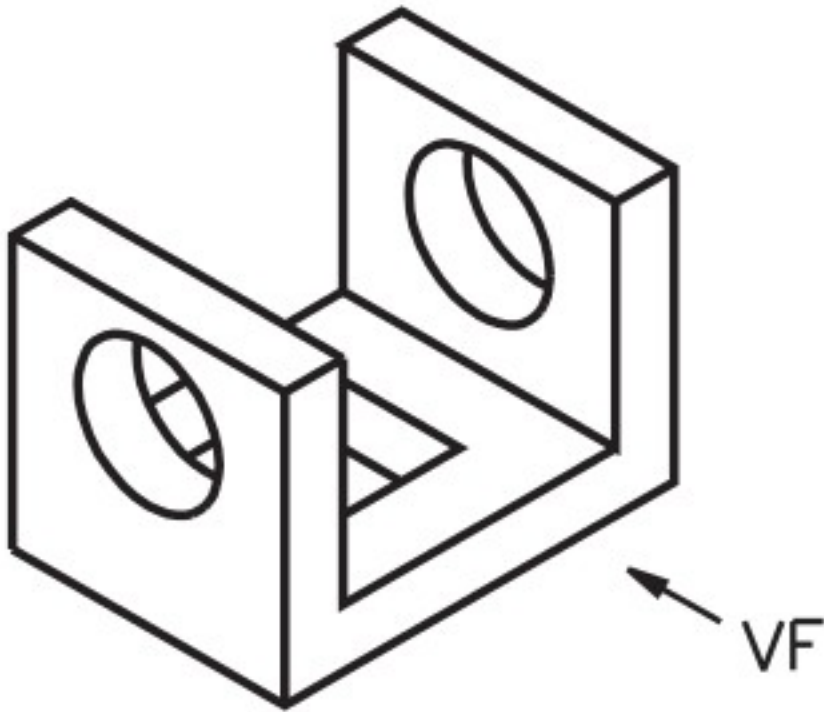
- Mostrando o interior dos objetos;
- Evitando excesso de arestas invisíveis – difícil visualização;



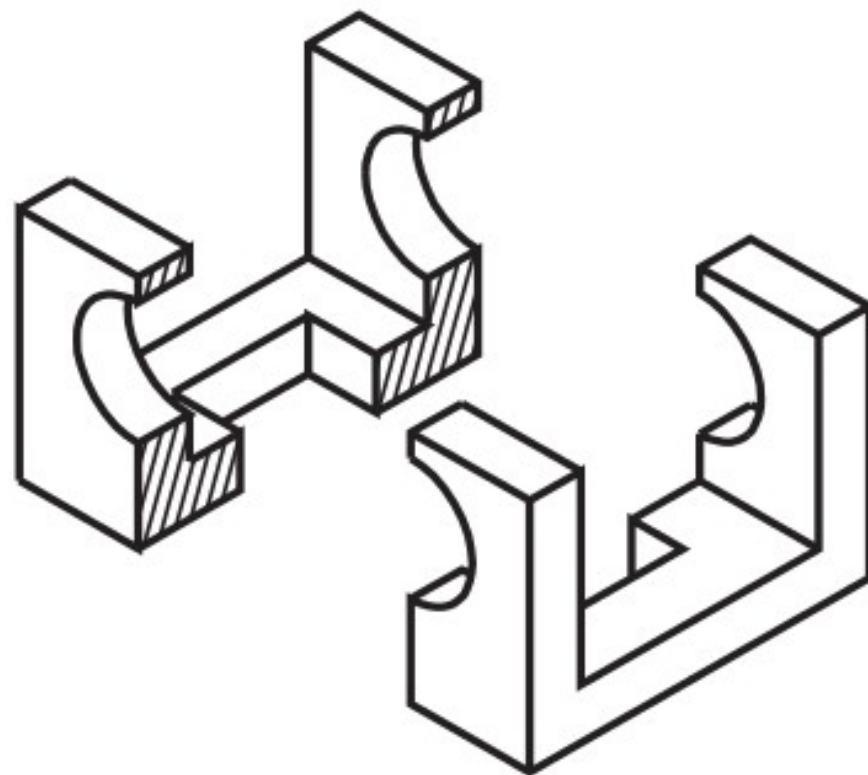
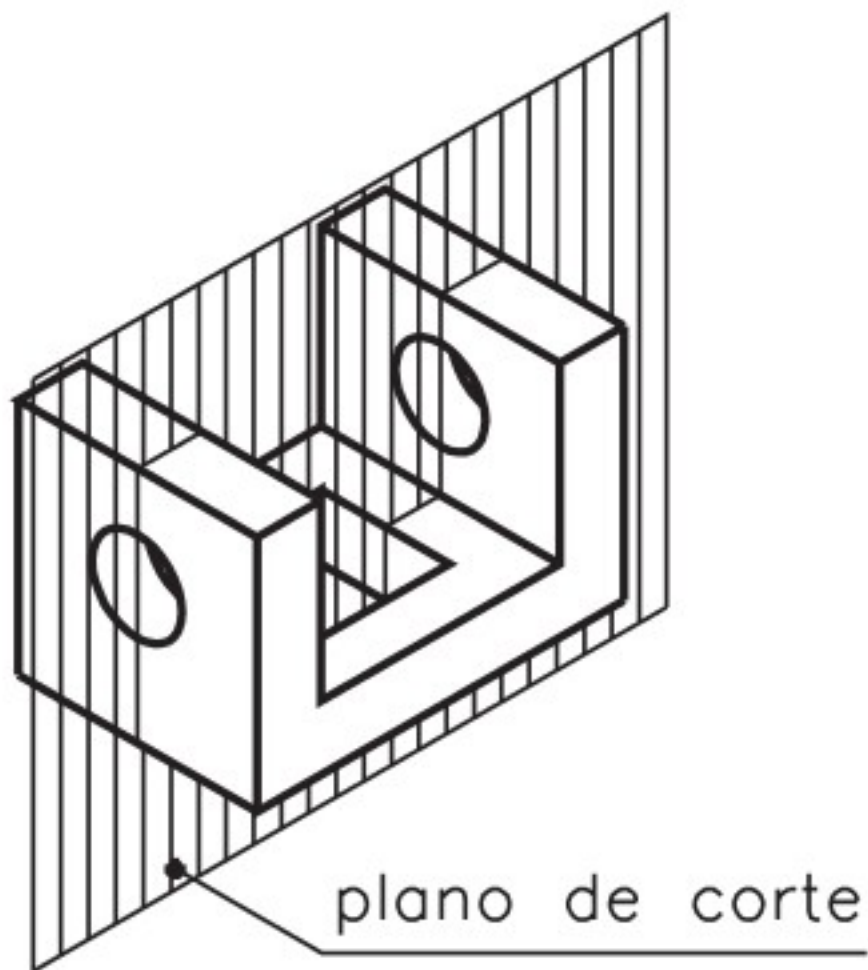
Leitura

- NBR 12.298, 10.067;
- GIESECKE, F. E., et al, Comunicação Gráfica Moderna
 - Capítulo 7
- Apostila Telecurso (aulas 11 à 15)

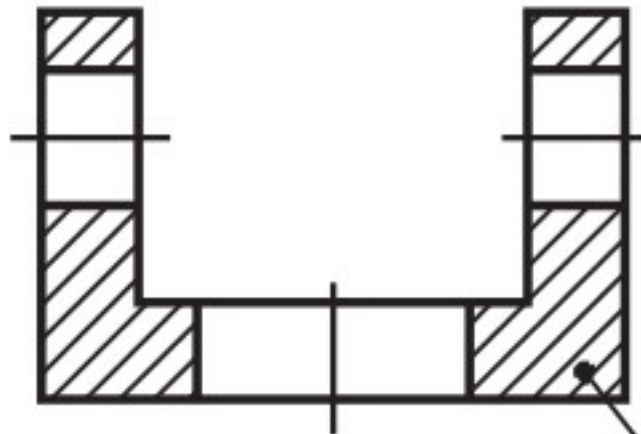
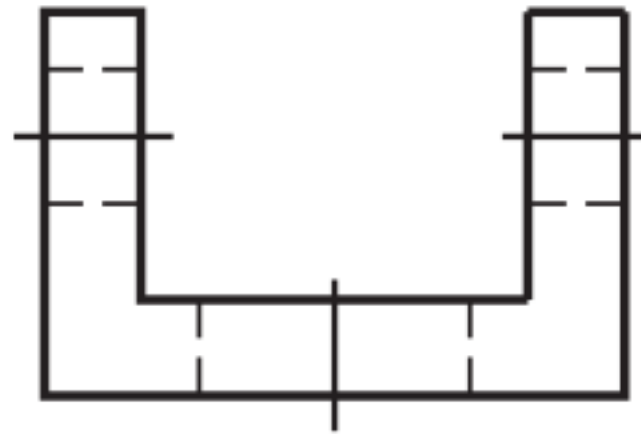
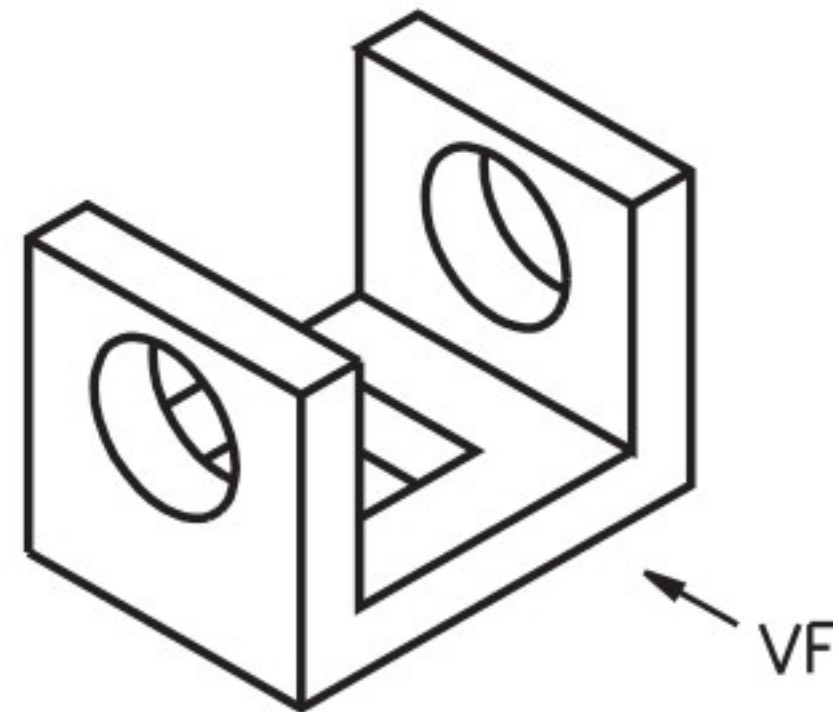
Cortes



Cortes

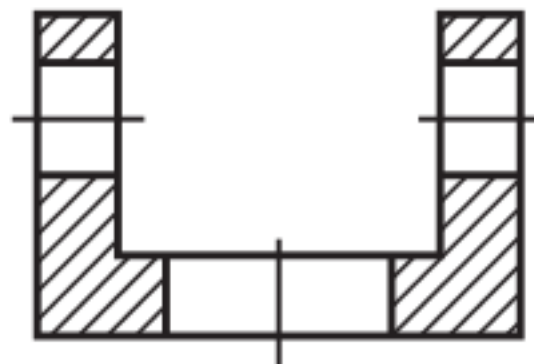


Cortes

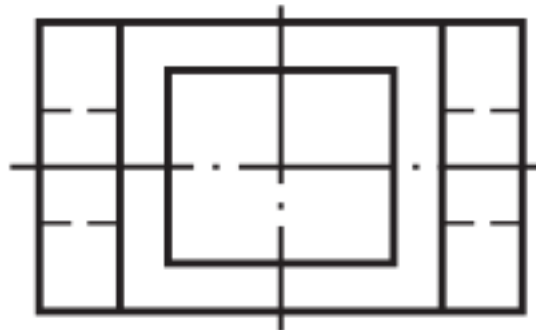
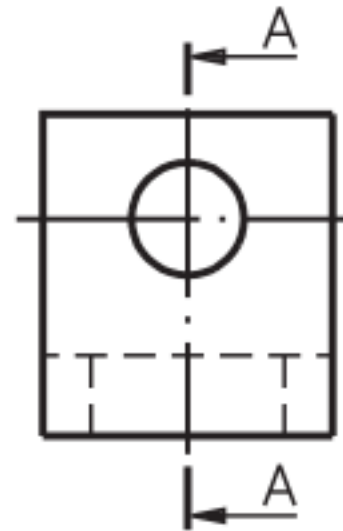


hachuras

Cortes



Corte AA

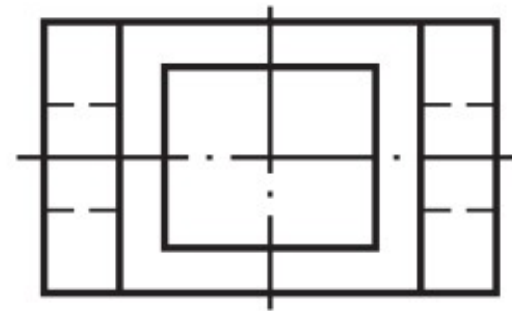
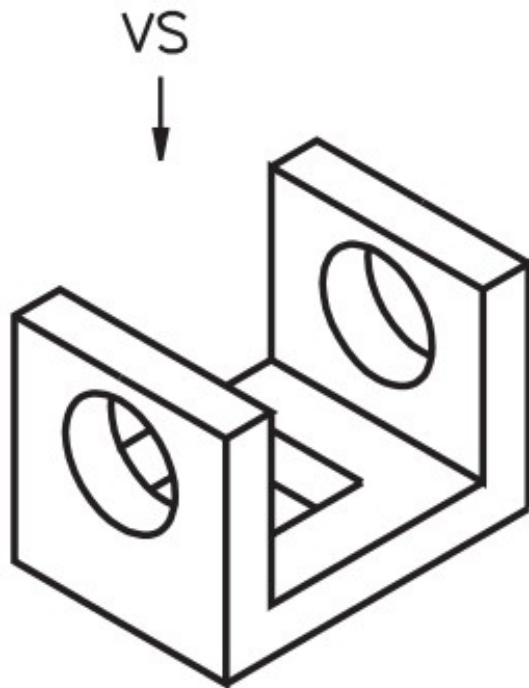




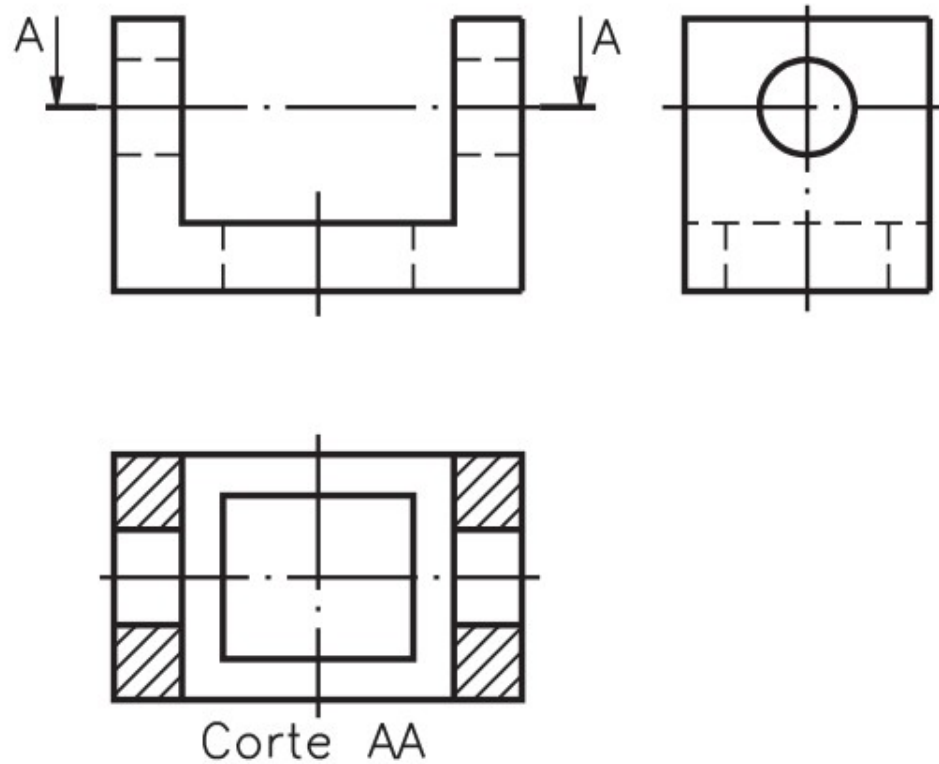
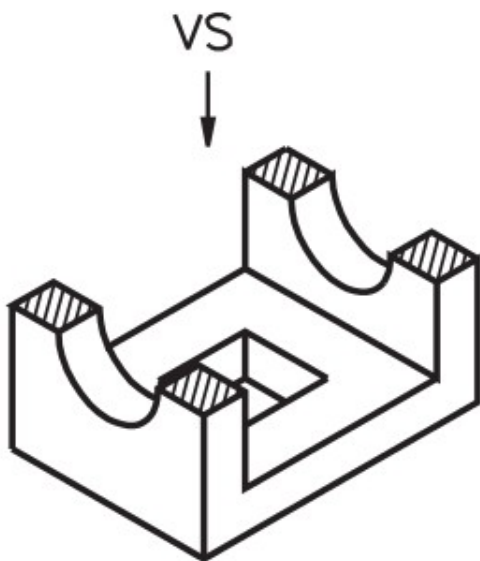
Cortes

- Evita-se a representação de linhas ocultas no corte;
- Hachurar as área cortada pelo plano de corte;

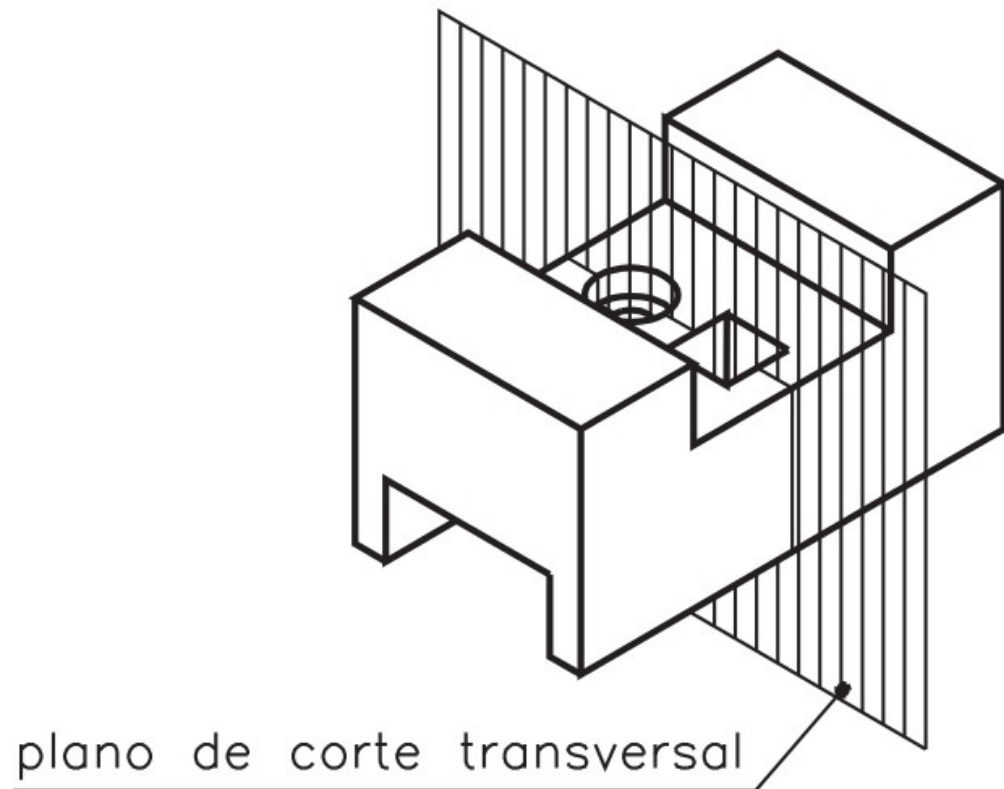
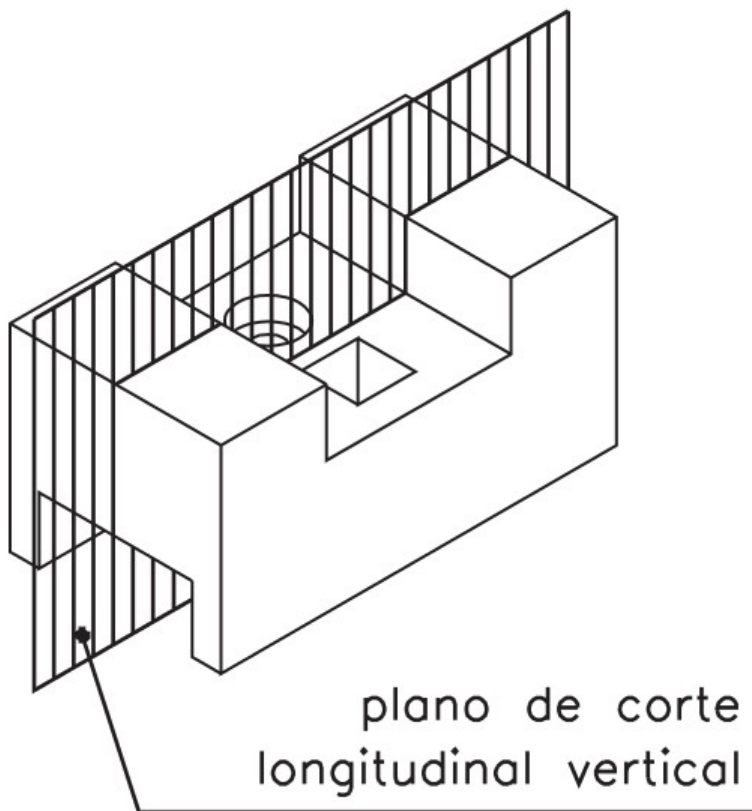
Cortes



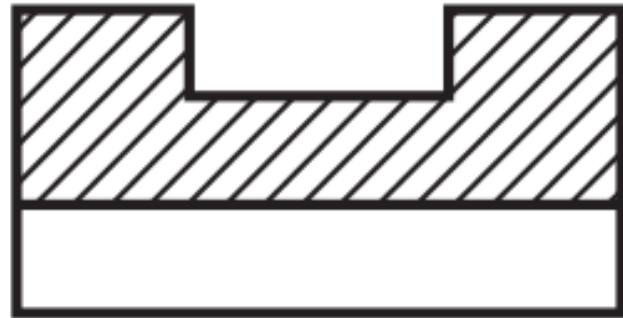
Cortes



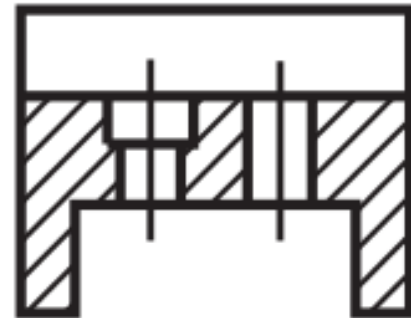
Cortes



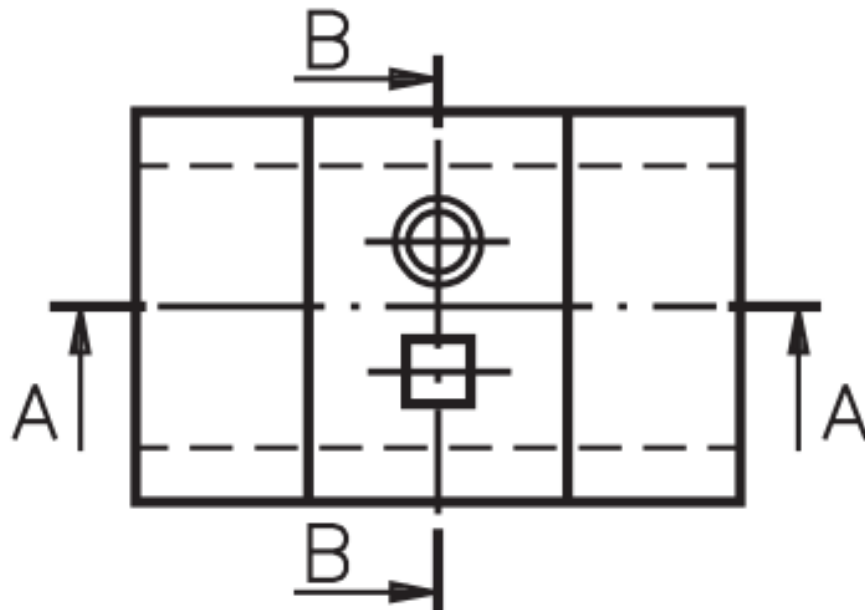
Cortes



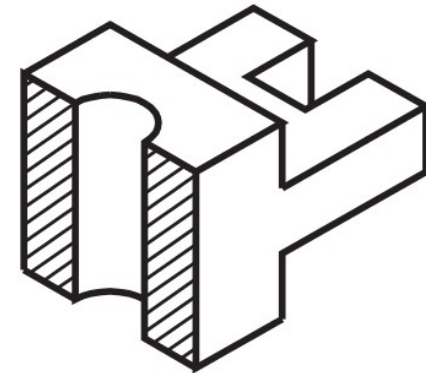
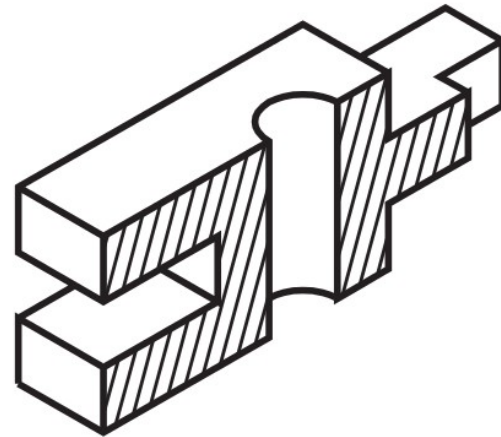
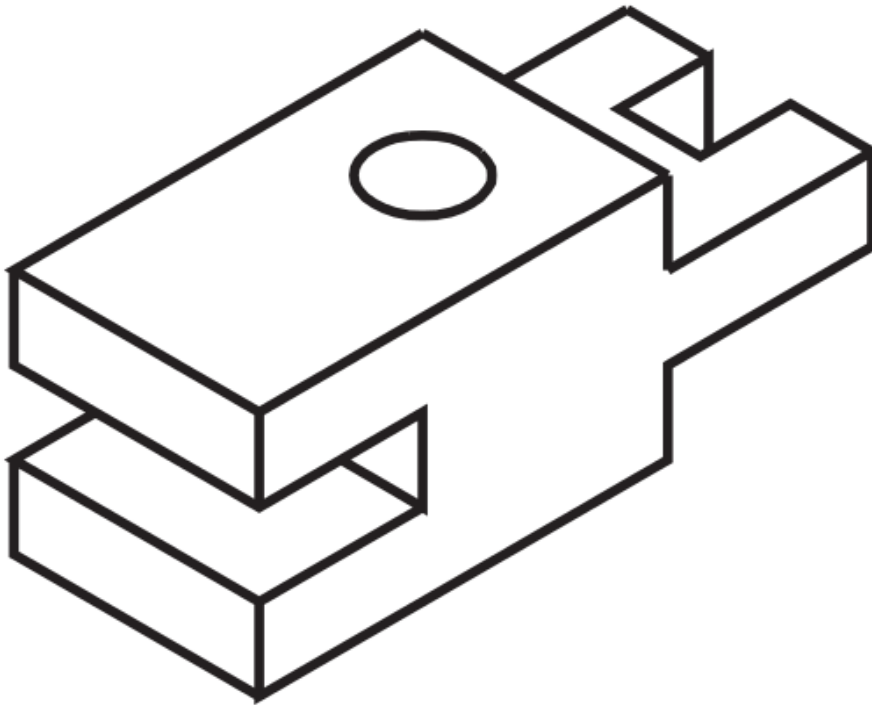
Corte AA



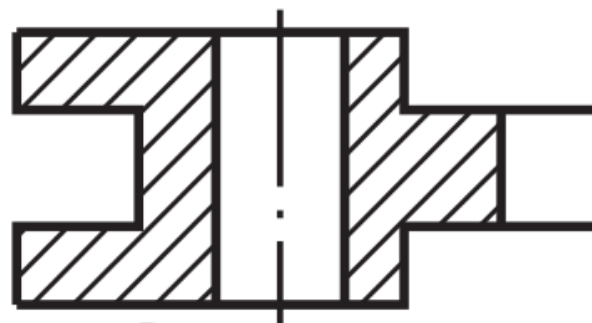
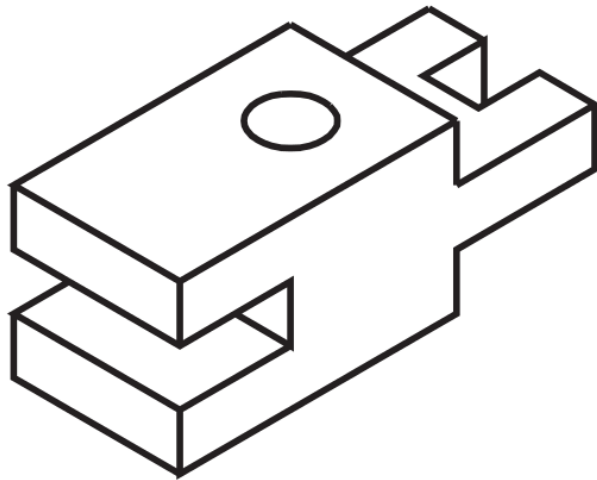
Corte BB



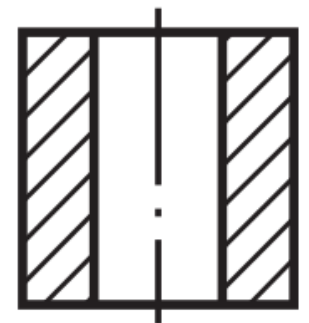
Cortes



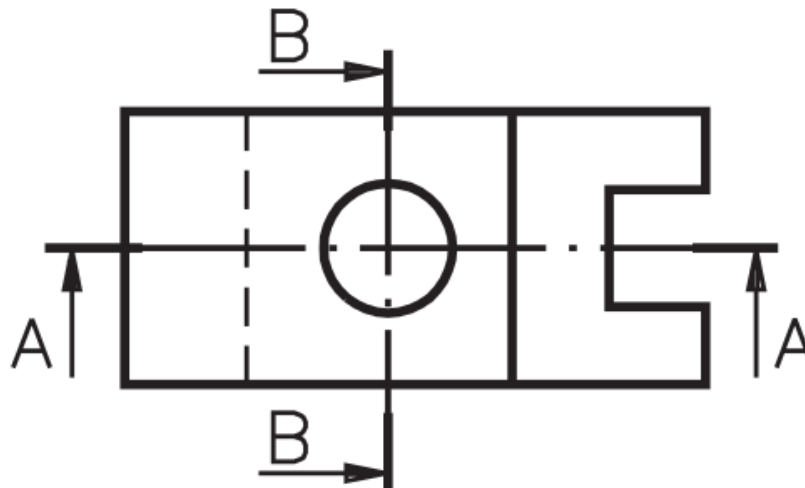
Cortes



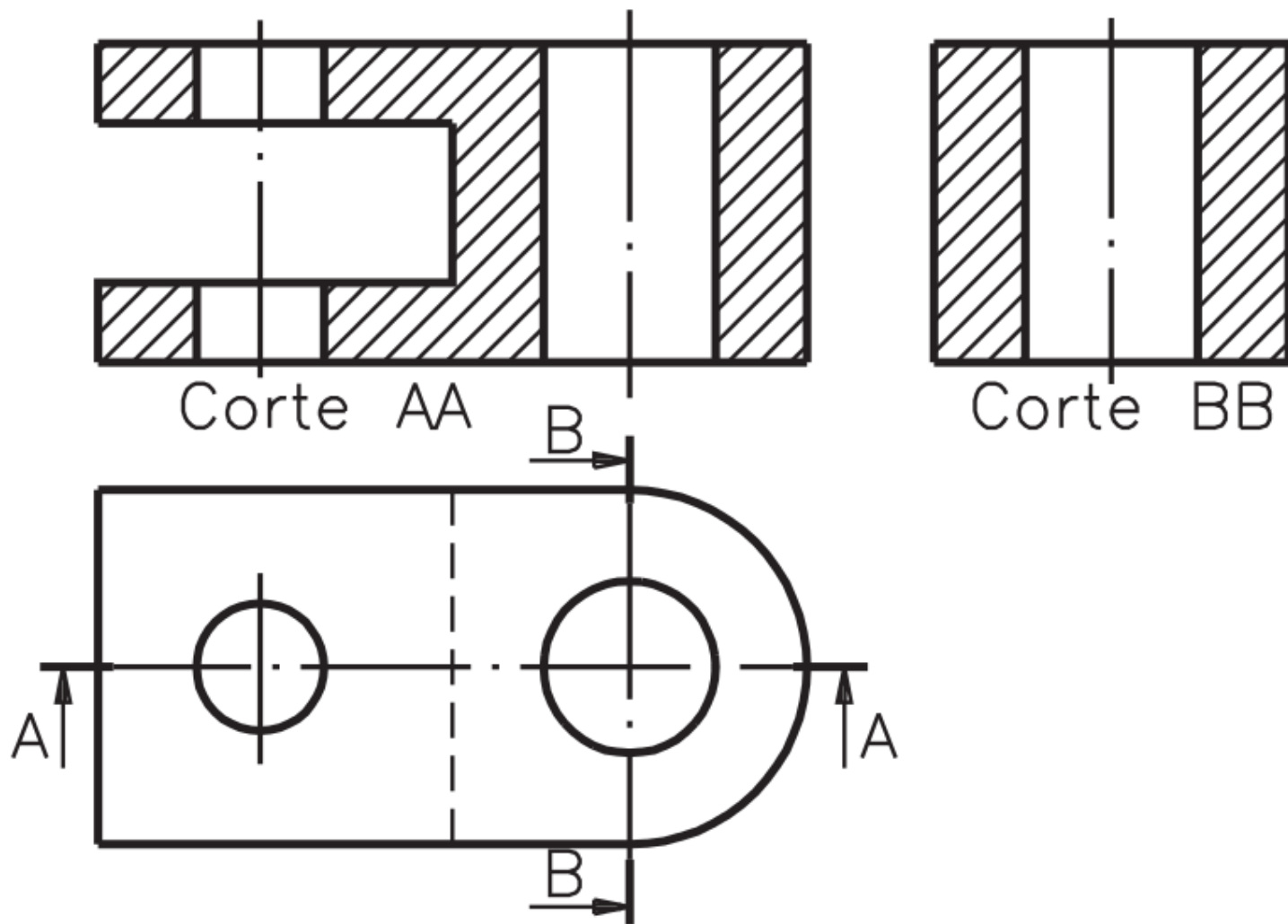
Corte AA



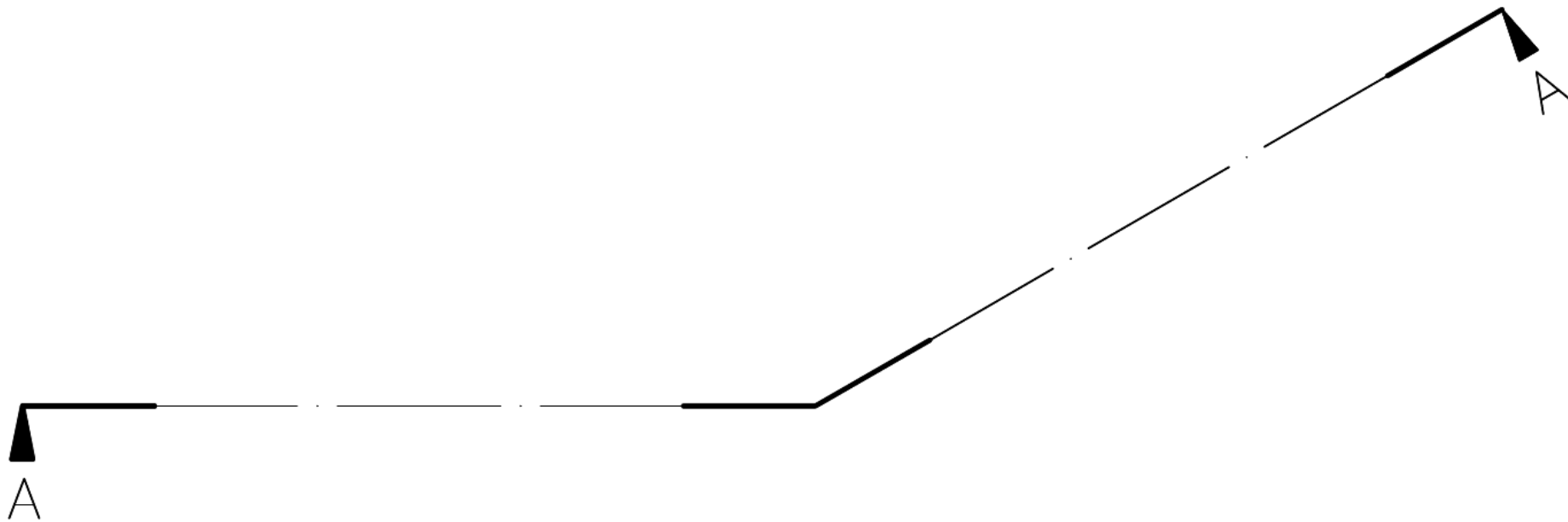
Corte BB



Cortes



Linha de corte





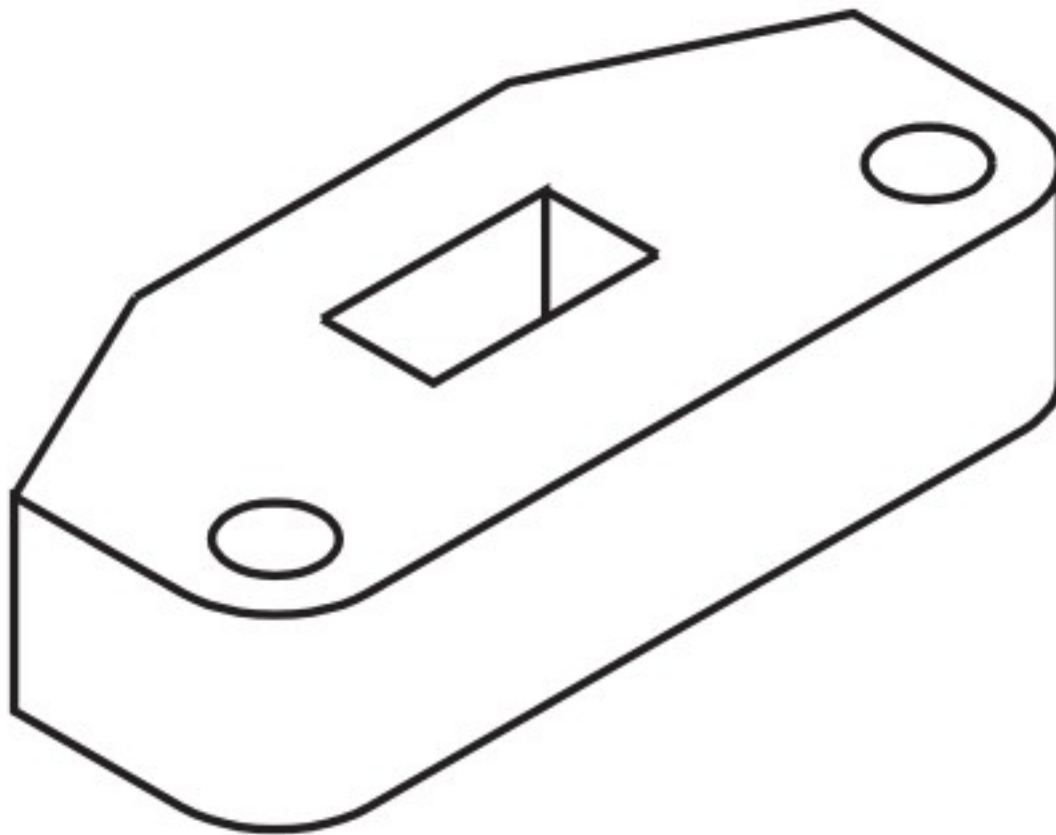
Cortes - Tipos

- Corte pleno;
- Corte composto:
 - Mais de 1 plano;
- Meio corte:
 - Plano de corte passando até metade do objeto
- Corte parcial:
 - Mostrando apenas detalhe de um objeto;

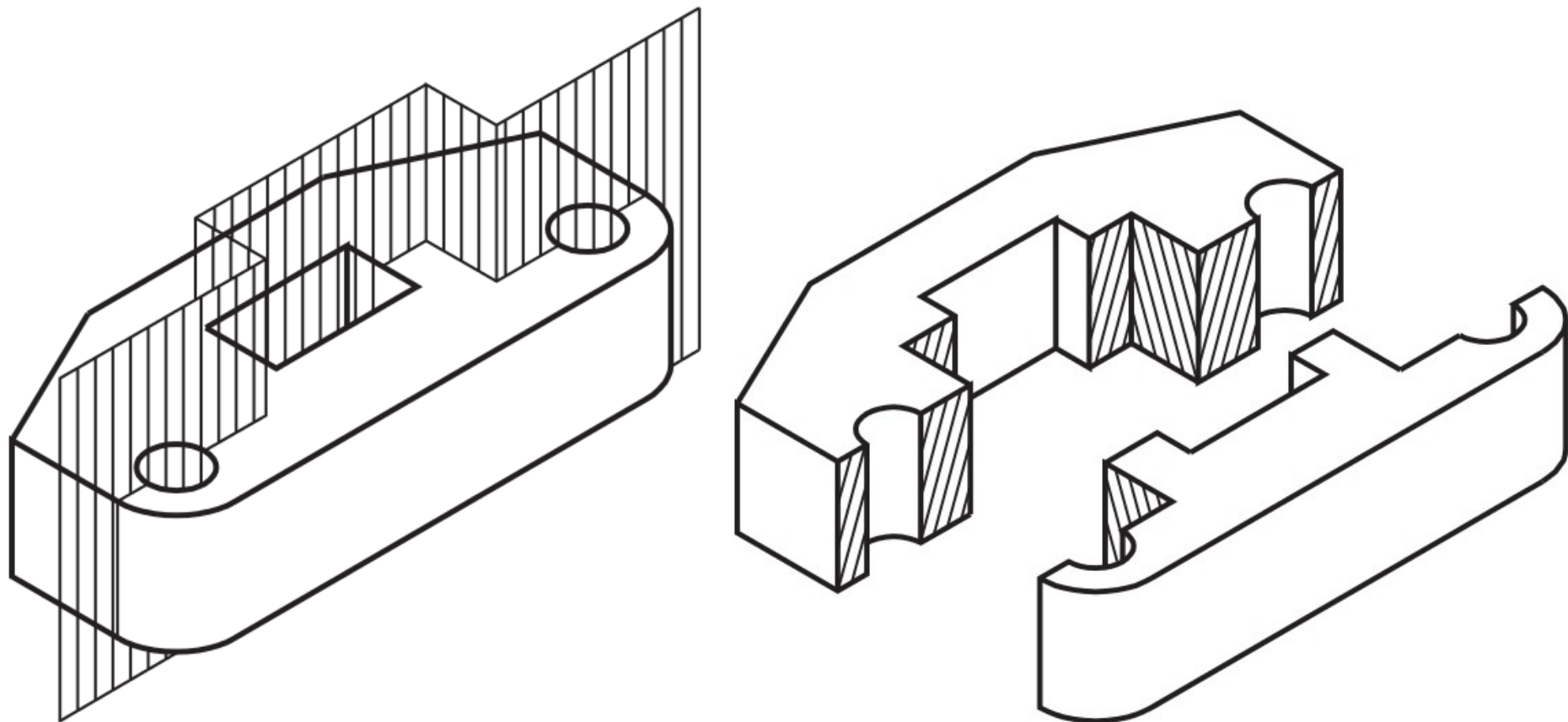


Corte composto

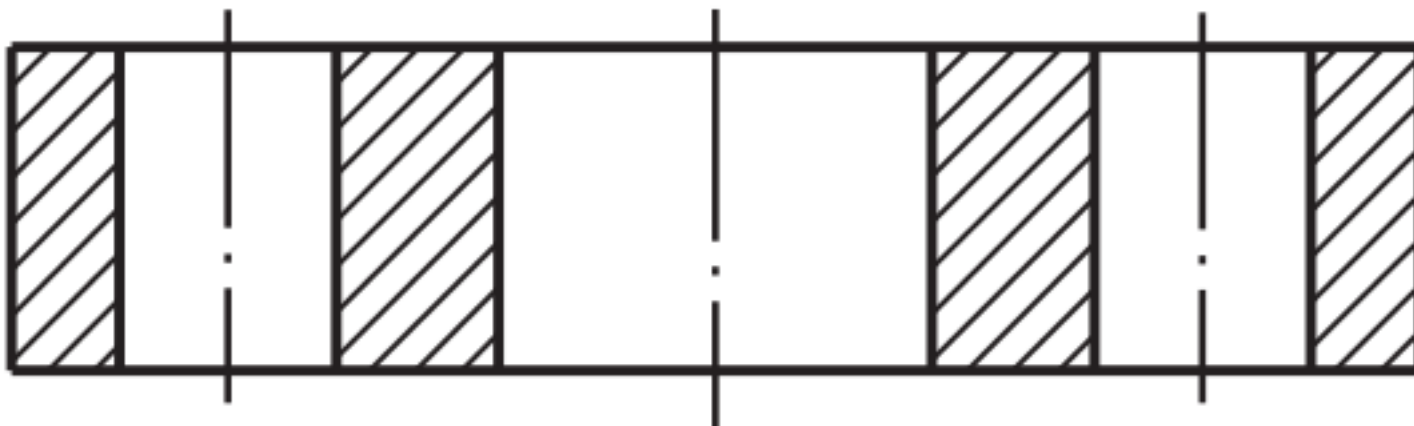
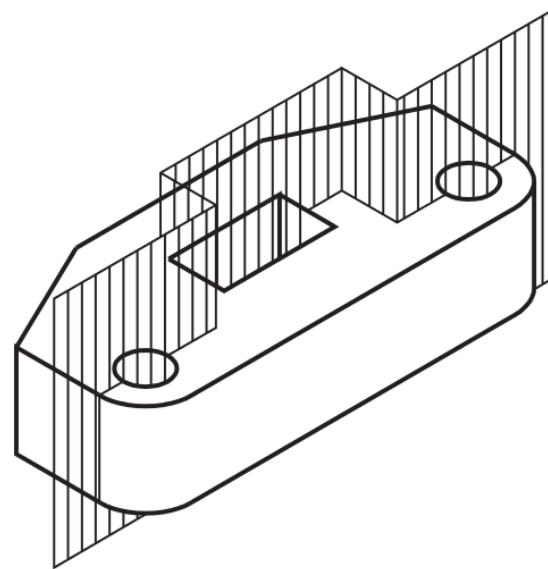
Corte composto



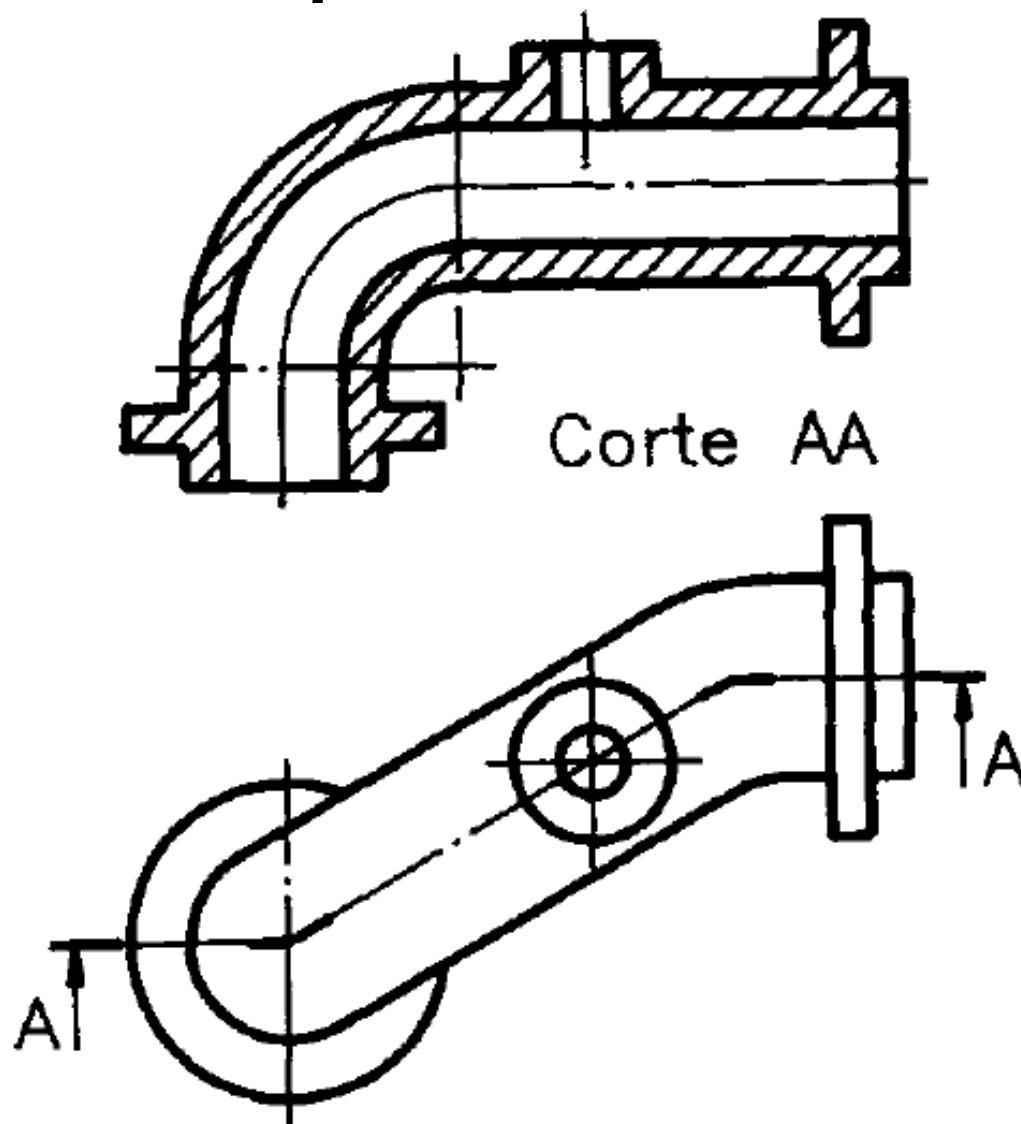
Corte composto



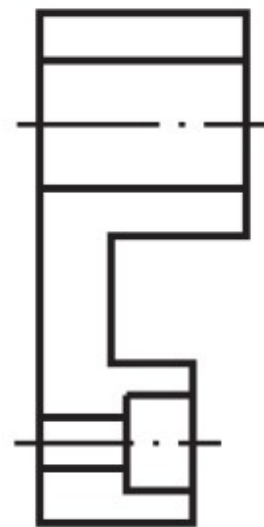
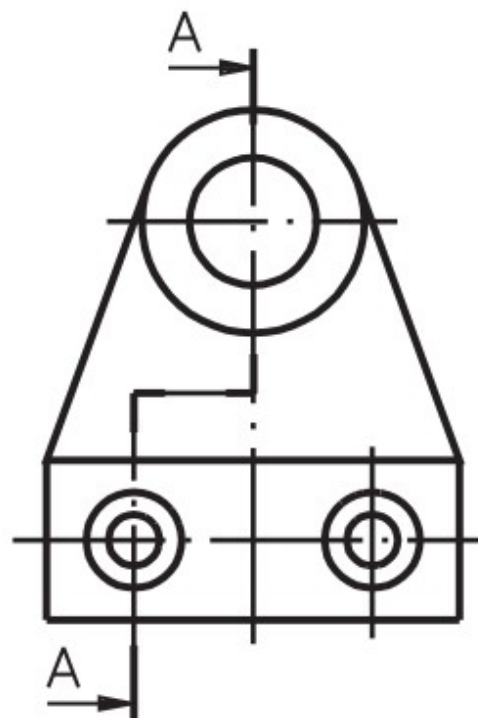
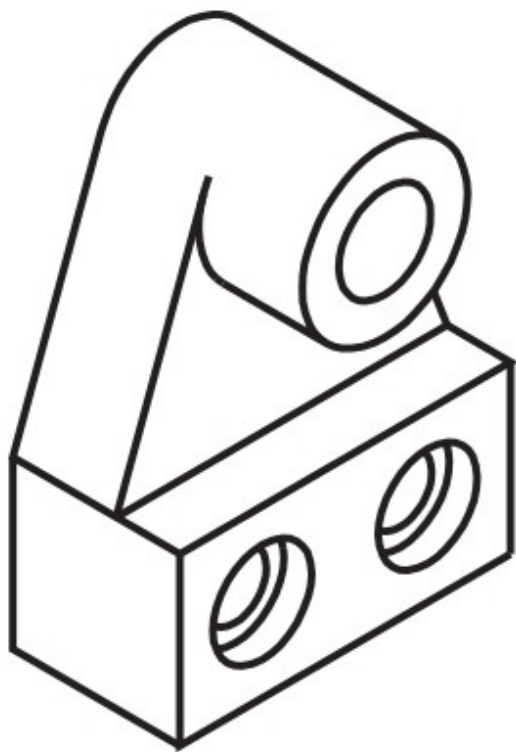
Corte composto




Cortes composto



Corte composto - Exercício



Corte AA

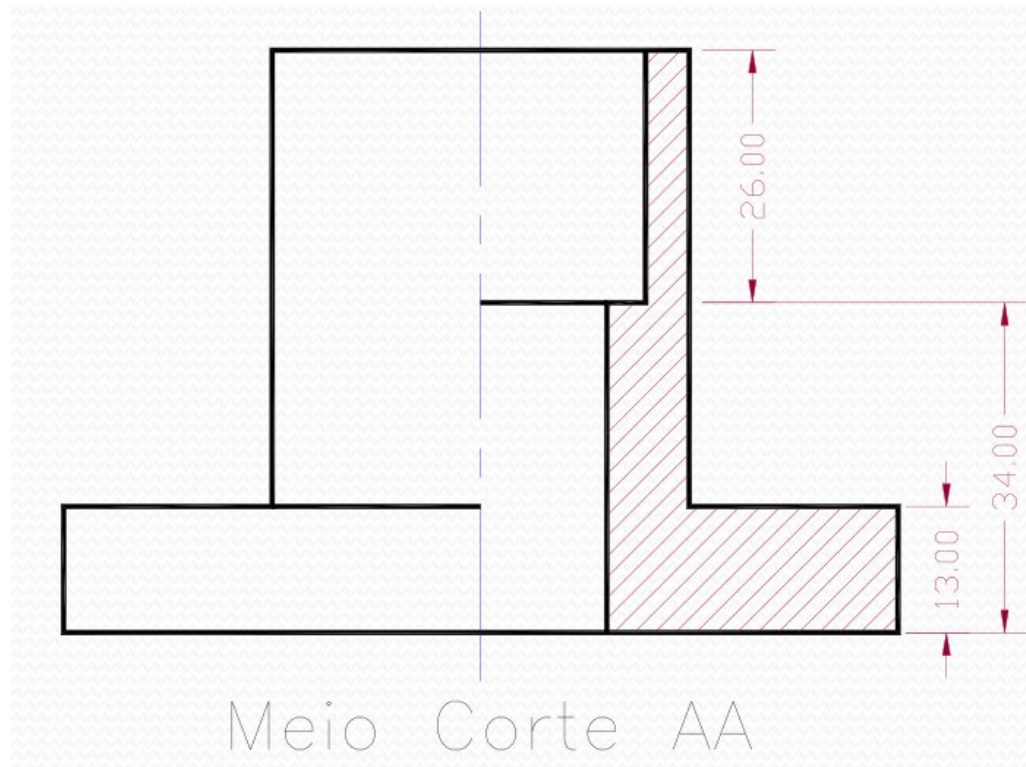


Meio-corte

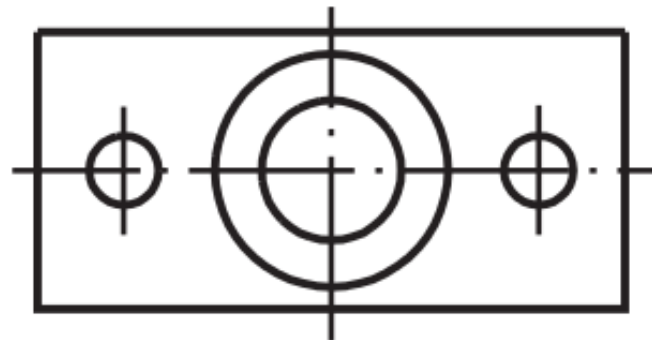
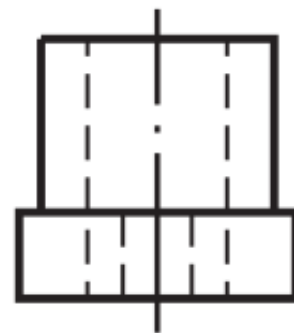
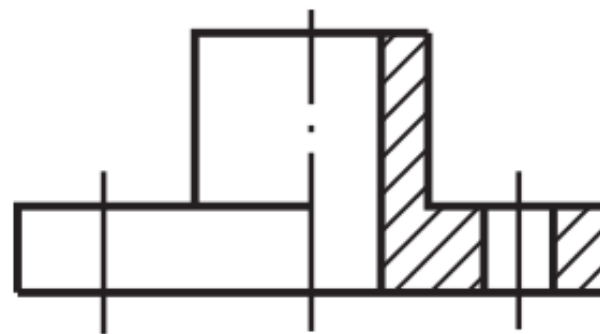
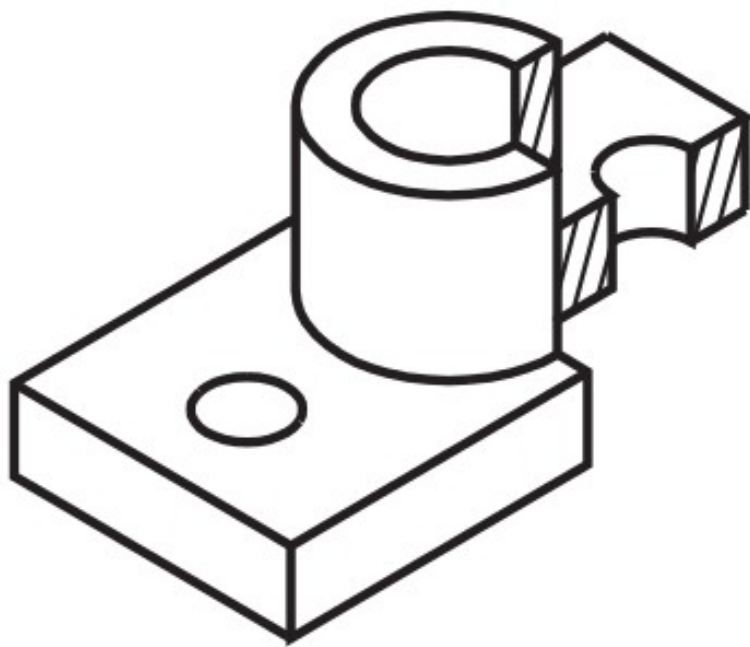
Meio-corte

■ Meio corte:

- Plano de corte passando até metade do objeto

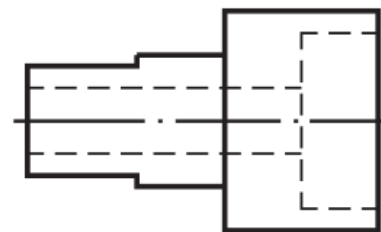
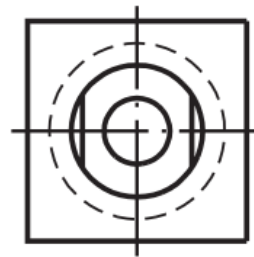
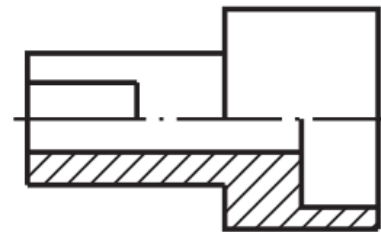
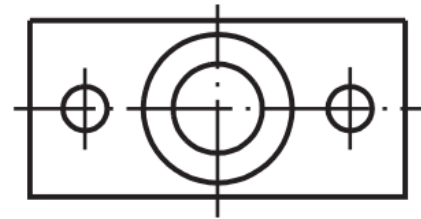
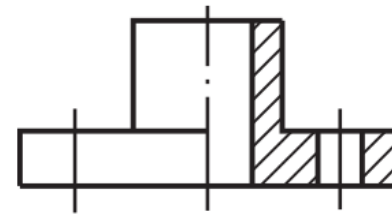


Meio-corte

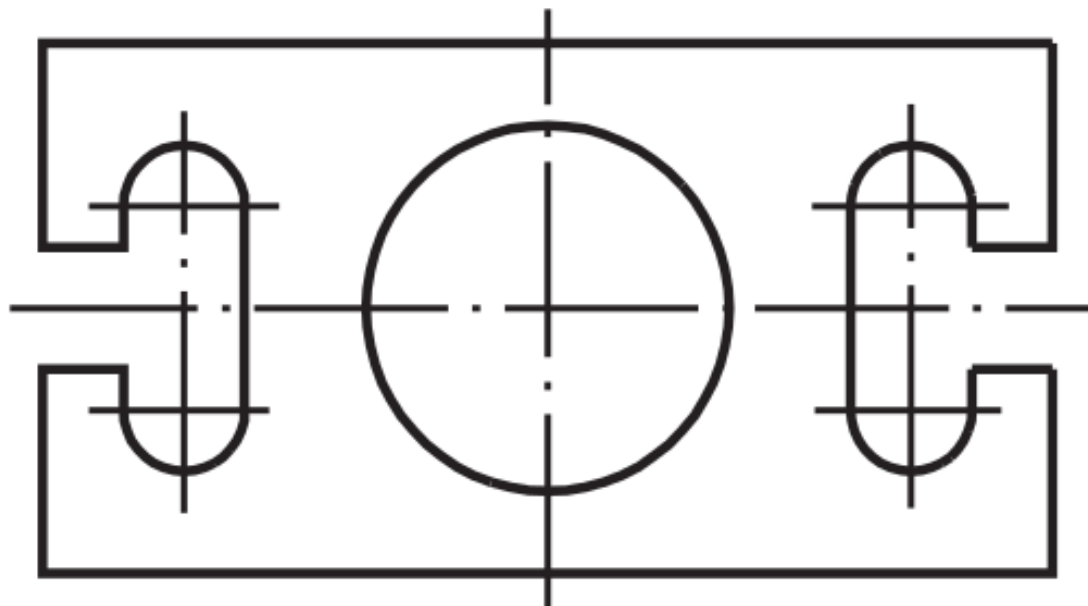
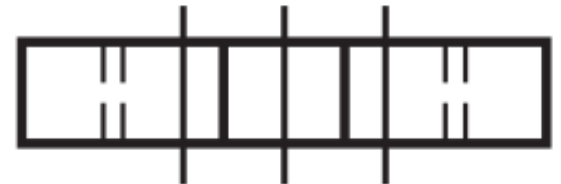


Meio-corte

- Corte no lado esquerdo ou embaixo
- Linha de simetria no centro
- Não representar linhas ocultas do lado direito
- Representar centro de furos
- Não é preciso indicar planos de corte



Meio-corte - Exercício





Corte rebatido

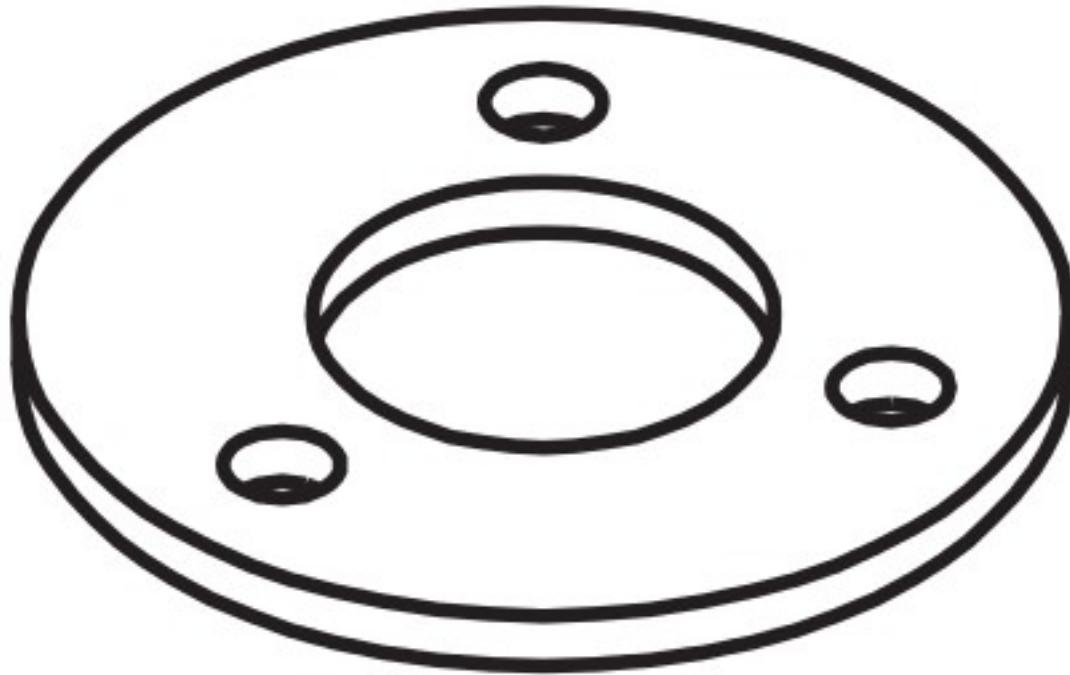


Corte rebatido

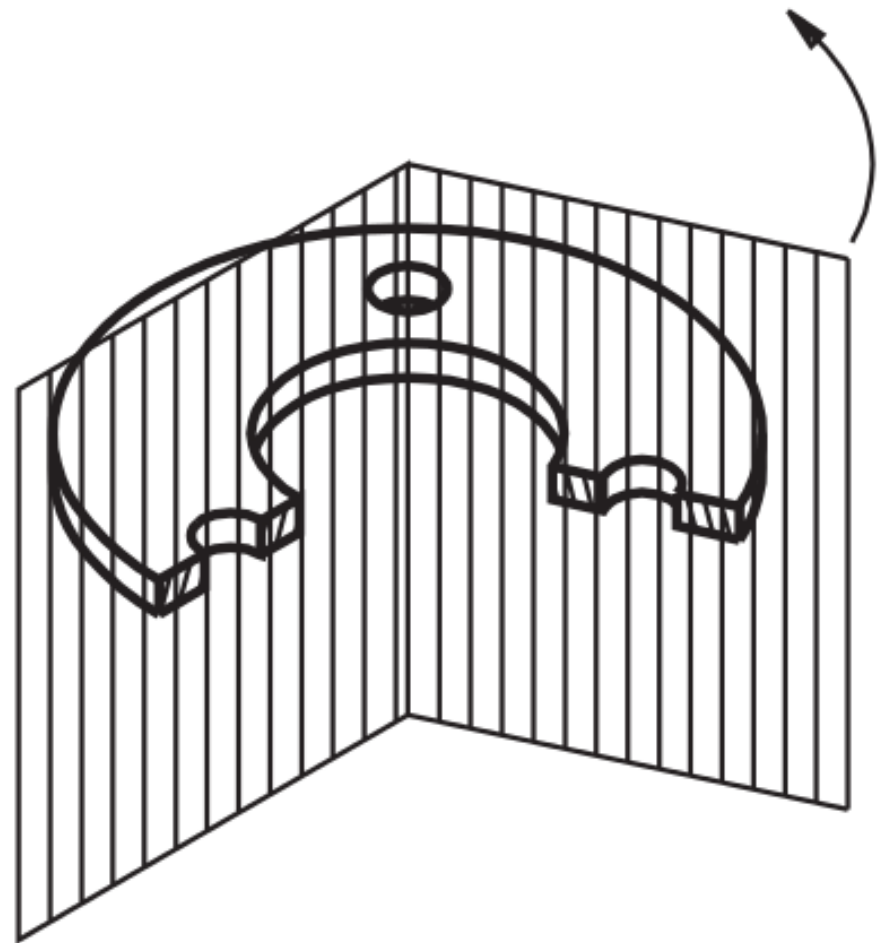
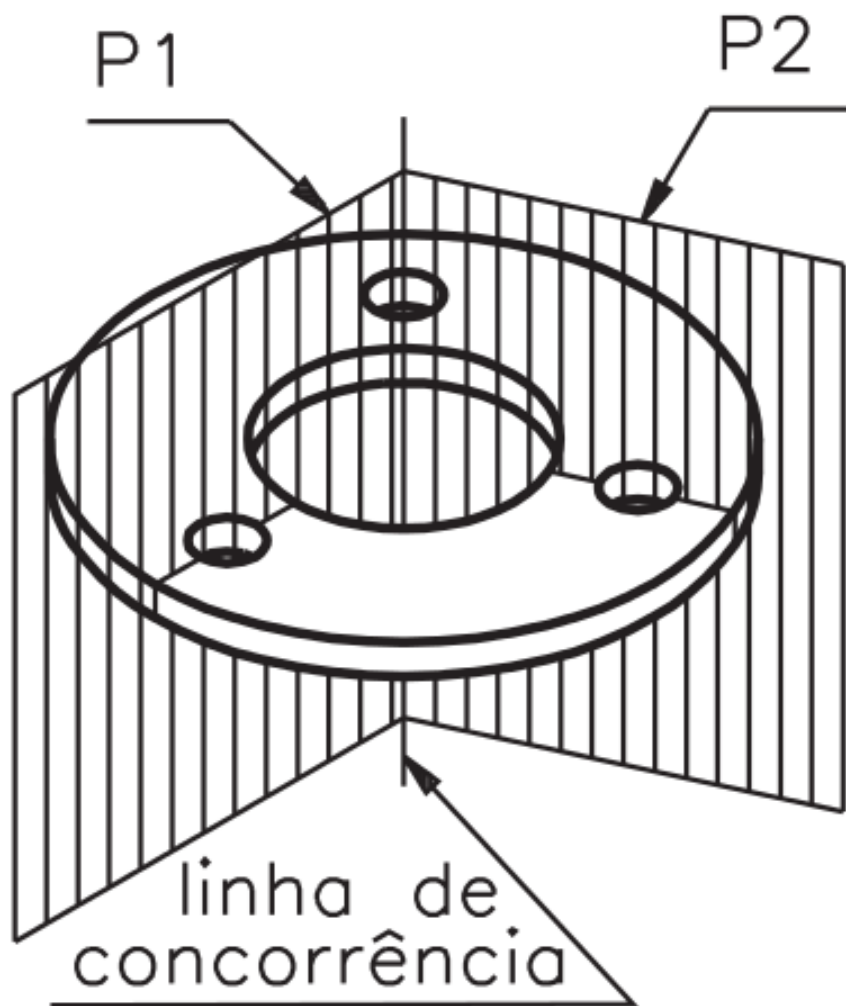
- Cortes rebatidos:

- Incluindo elementos inclinados (dobrando o plano de corte)

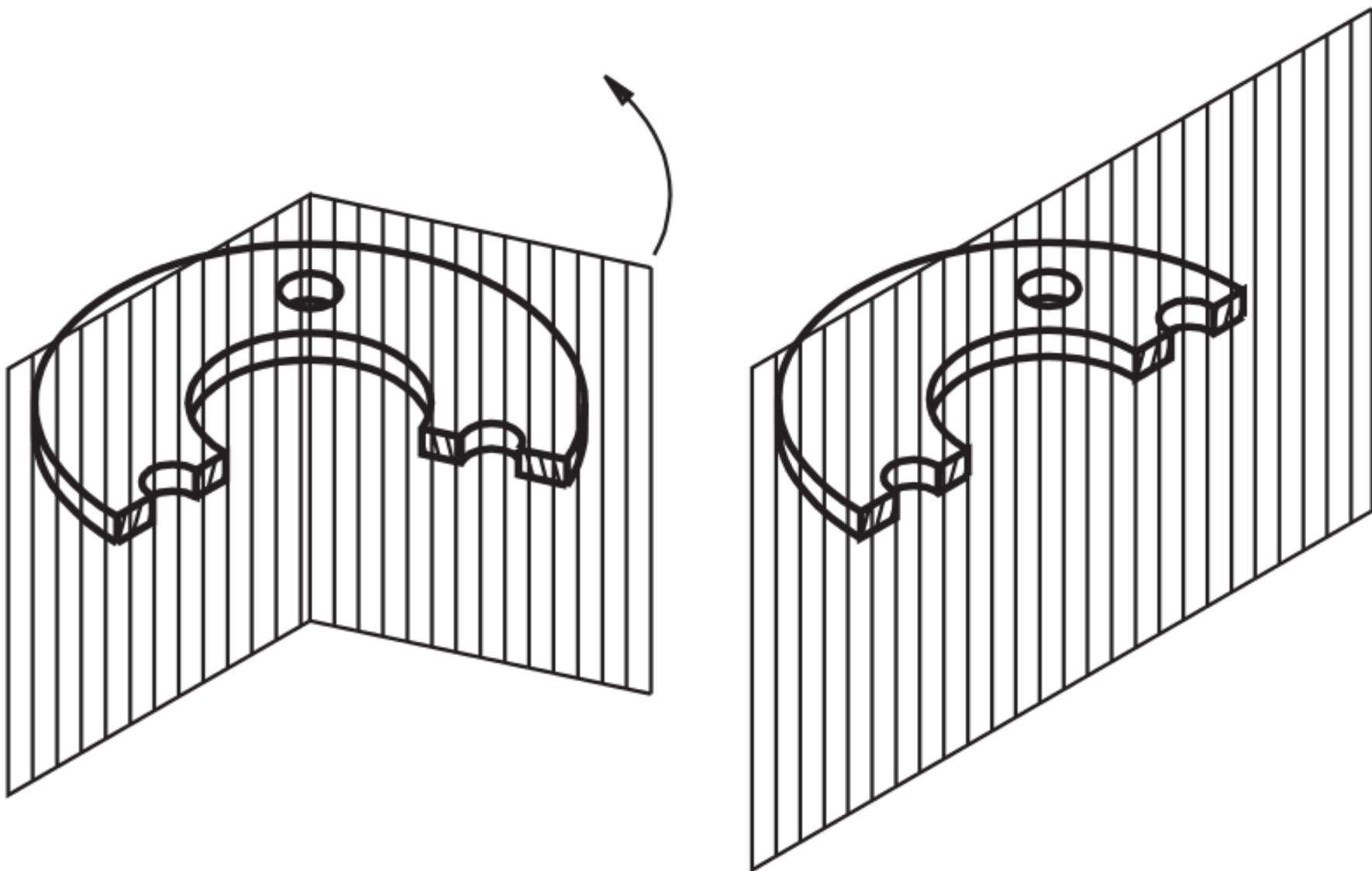
Corte rebatido



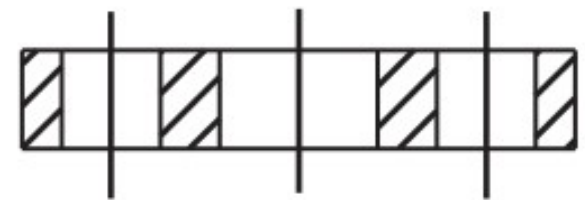
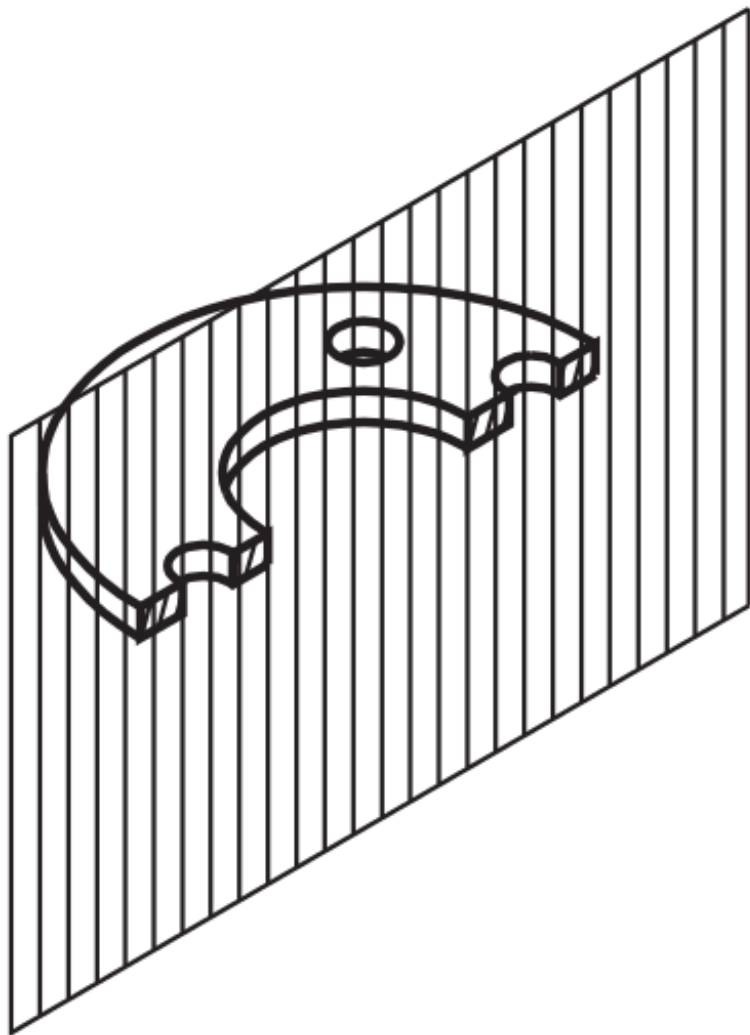
Corte rebatido



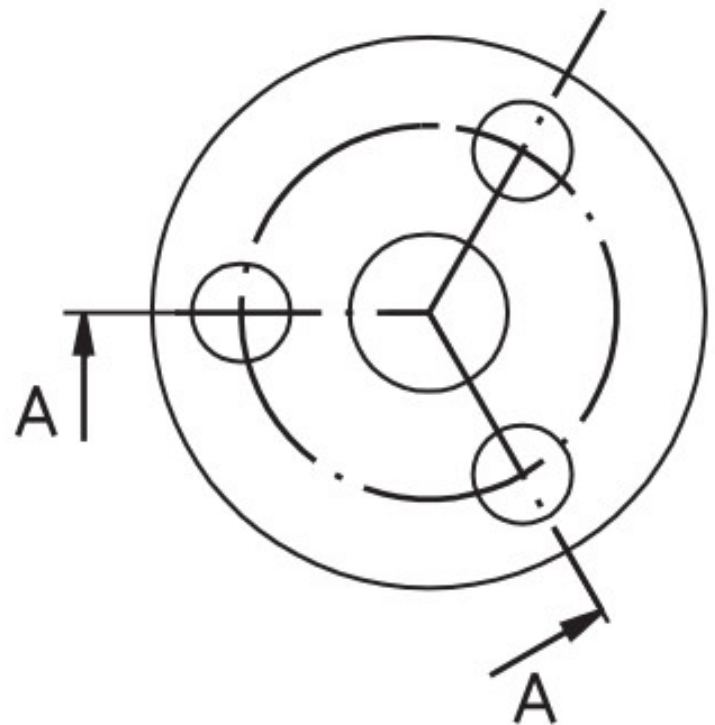
Corte rebatido



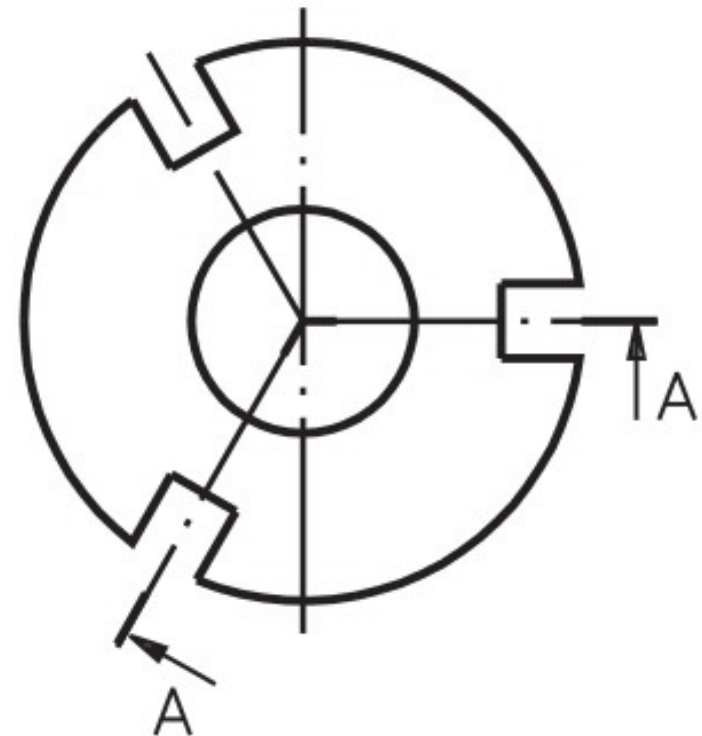
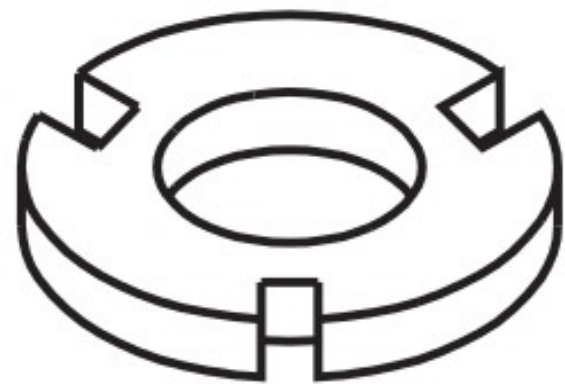
Corte rebatido



Corte AA



Corte rebatido



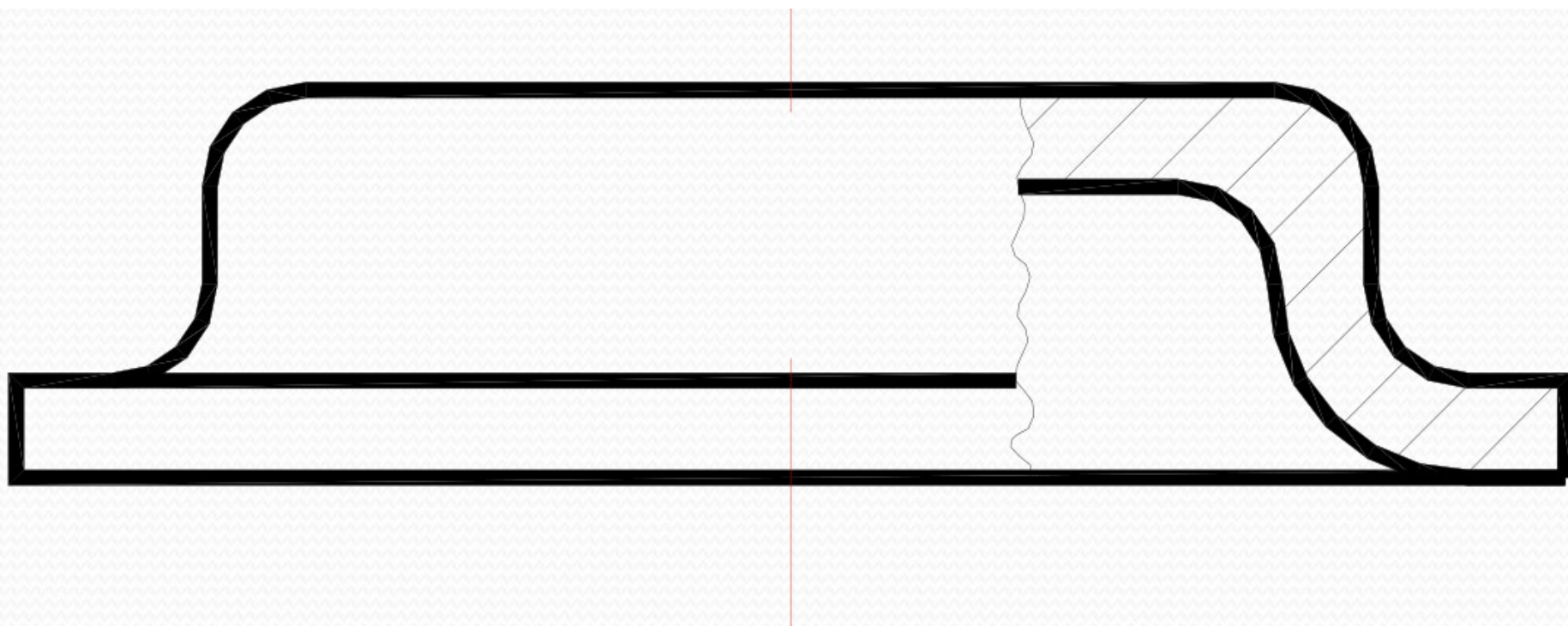


Corte parcial

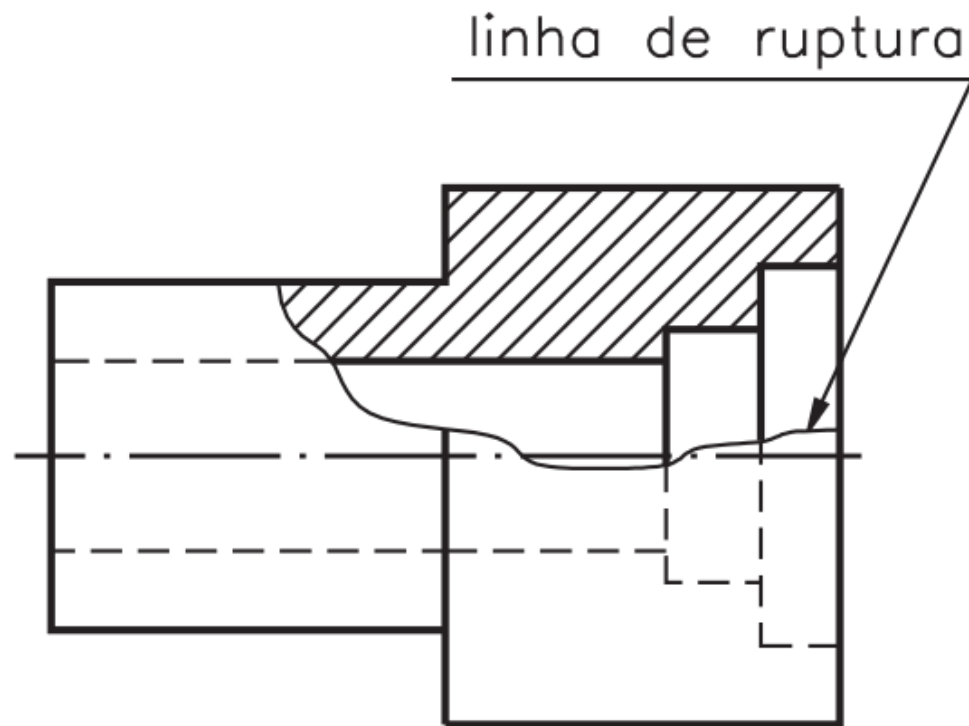
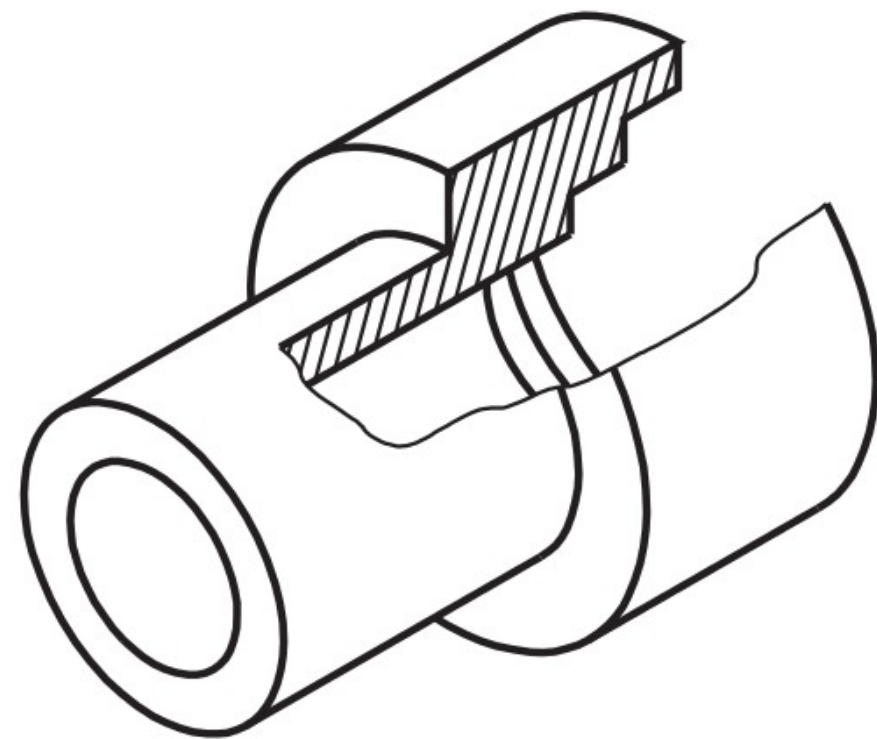
Corte parcial

- Corte parcial:

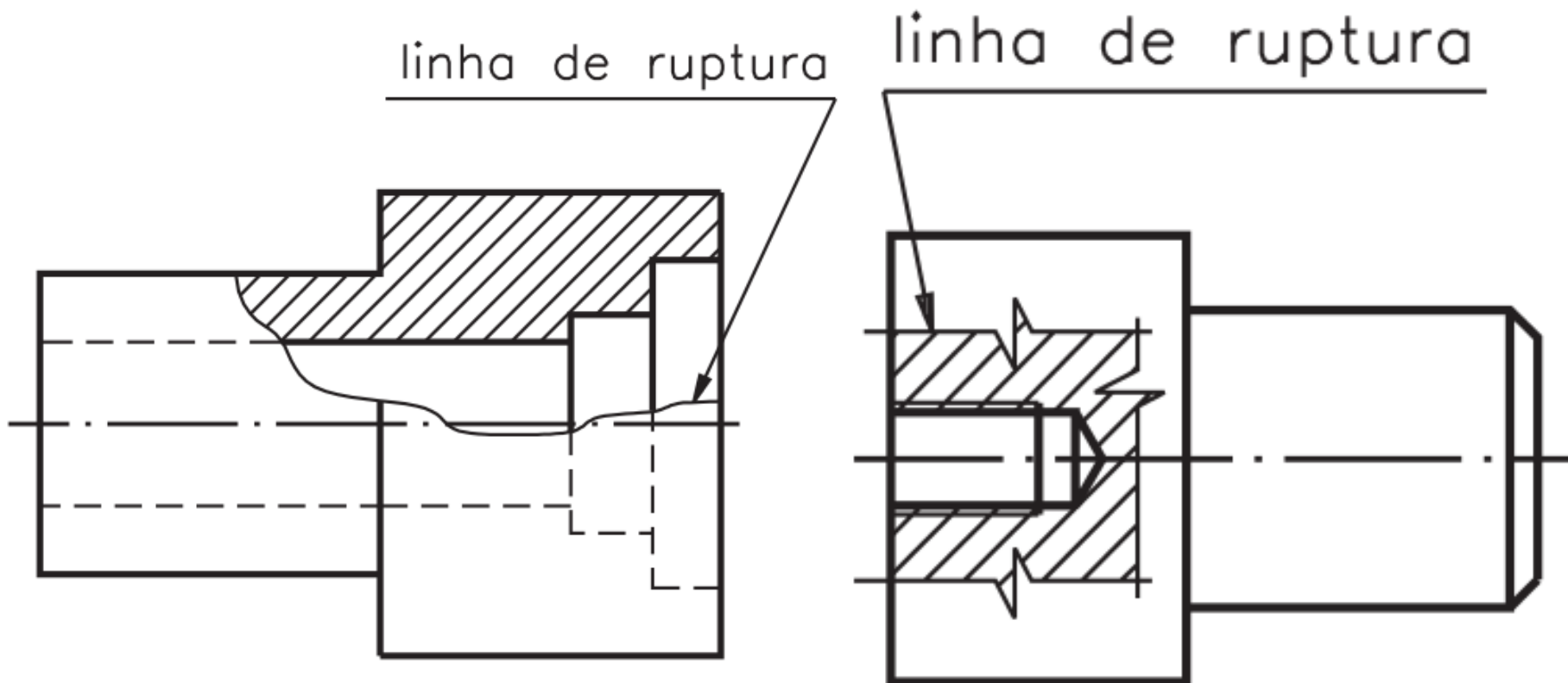
- Mostrando apenas detalhe de um objeto;



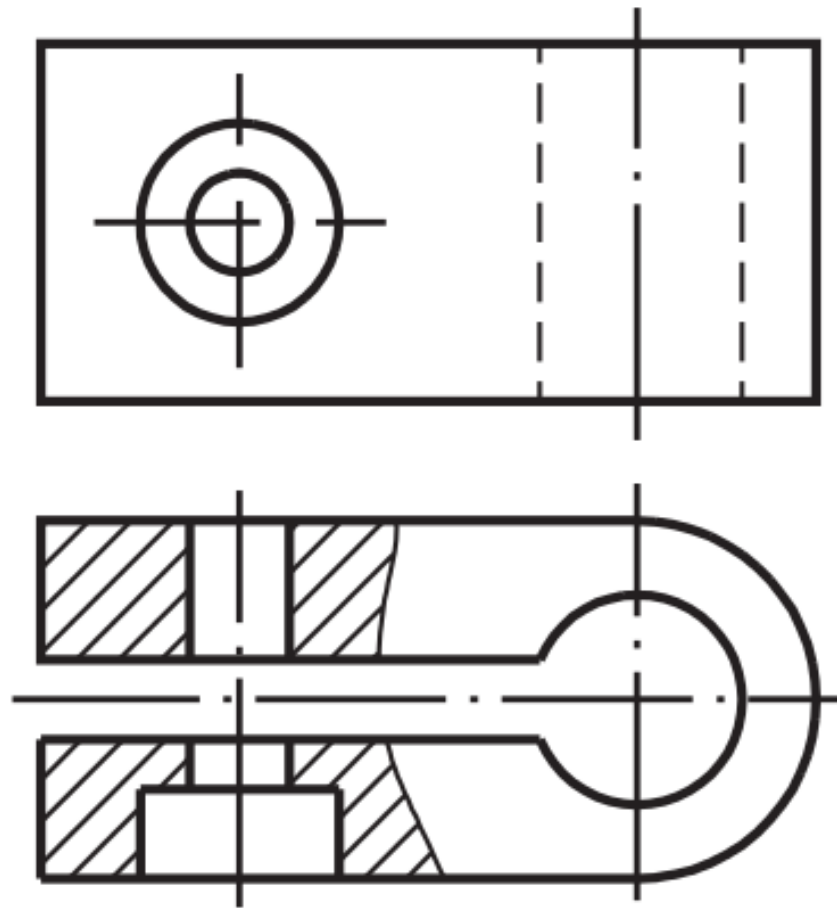
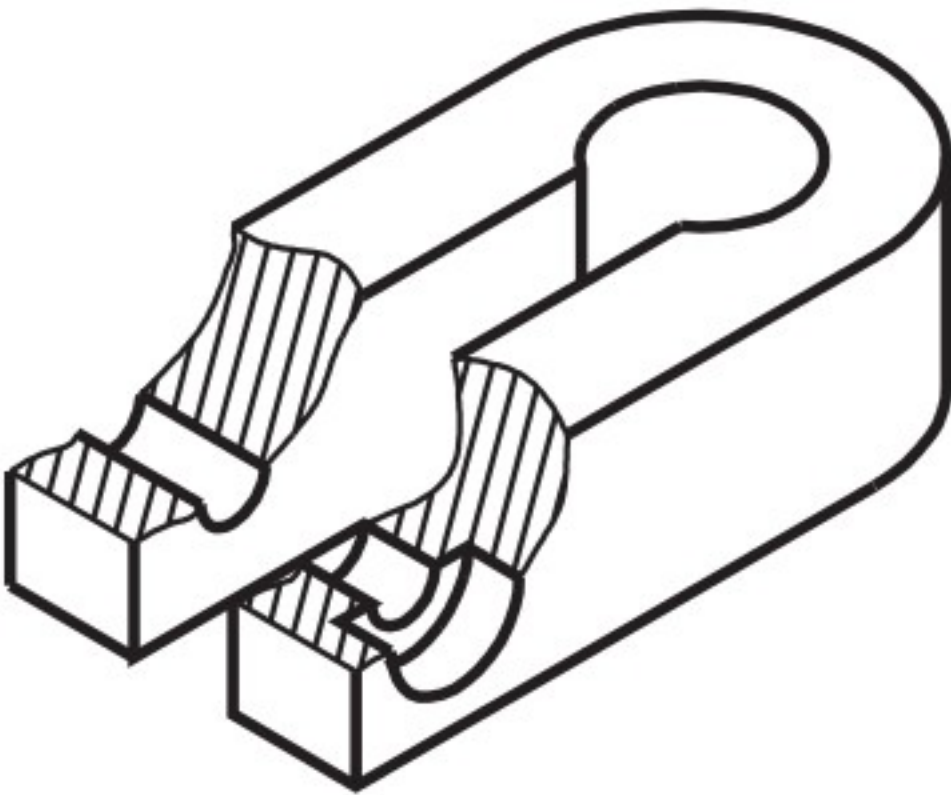
Corte parcial



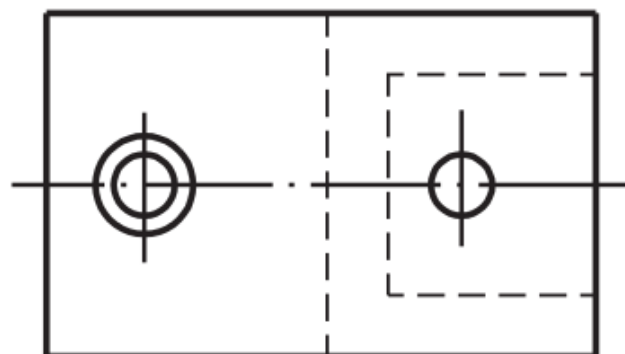
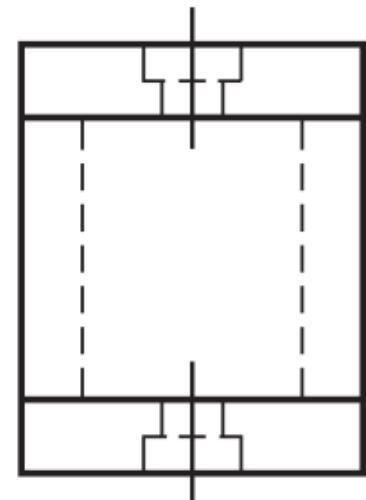
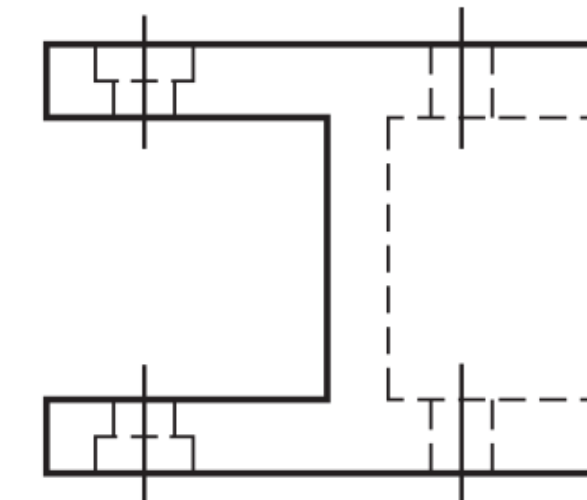
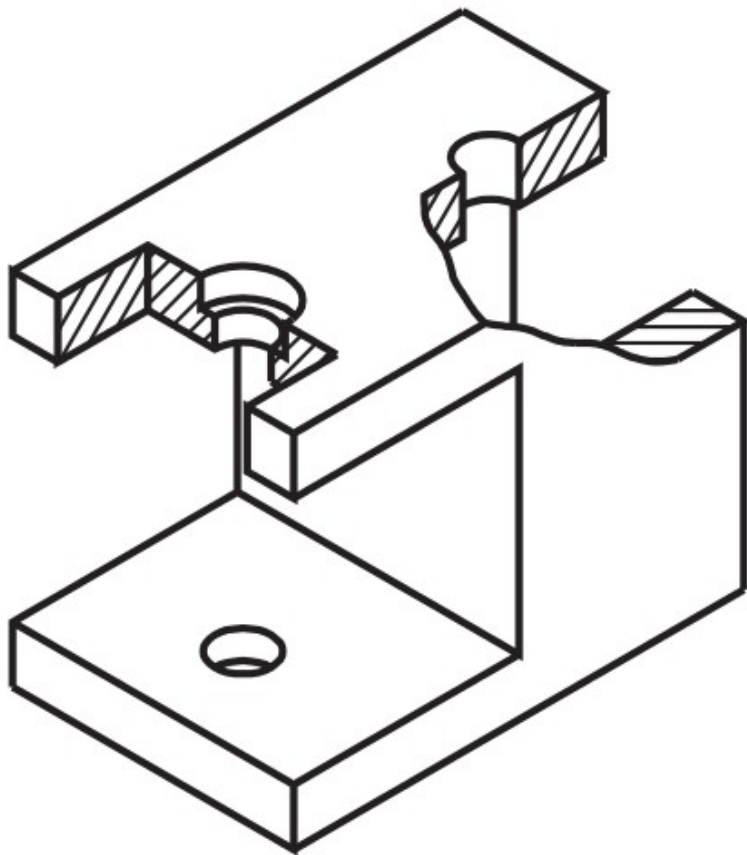
Corte parcial



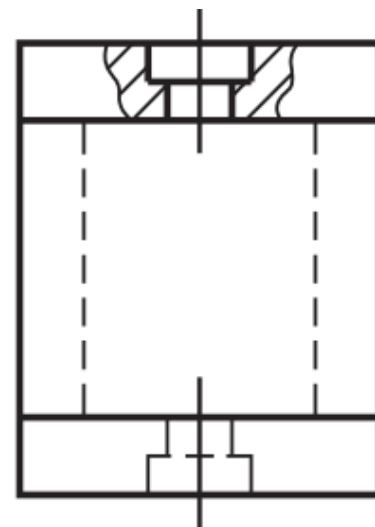
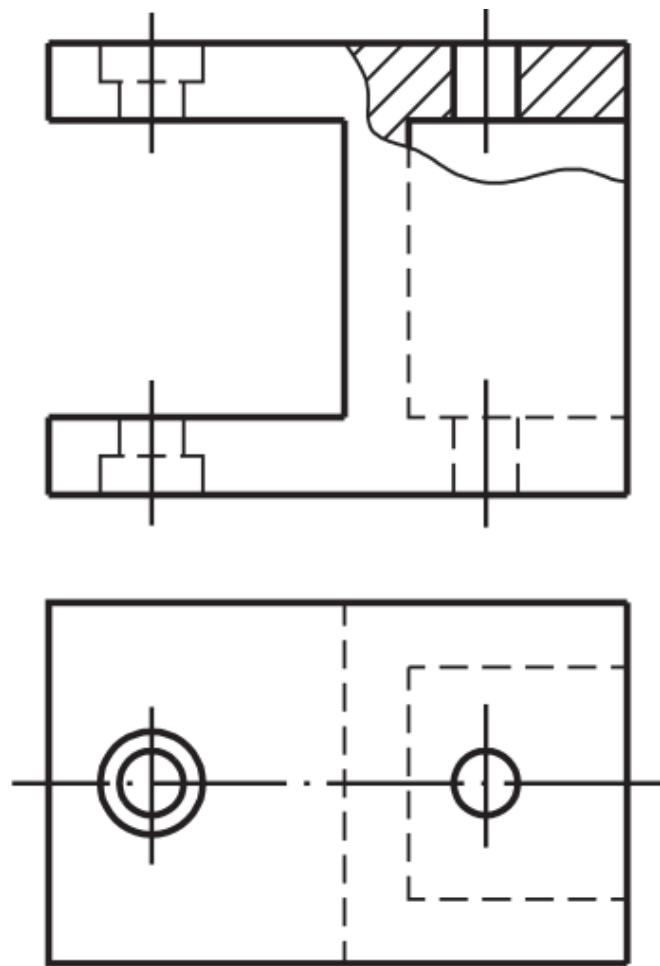
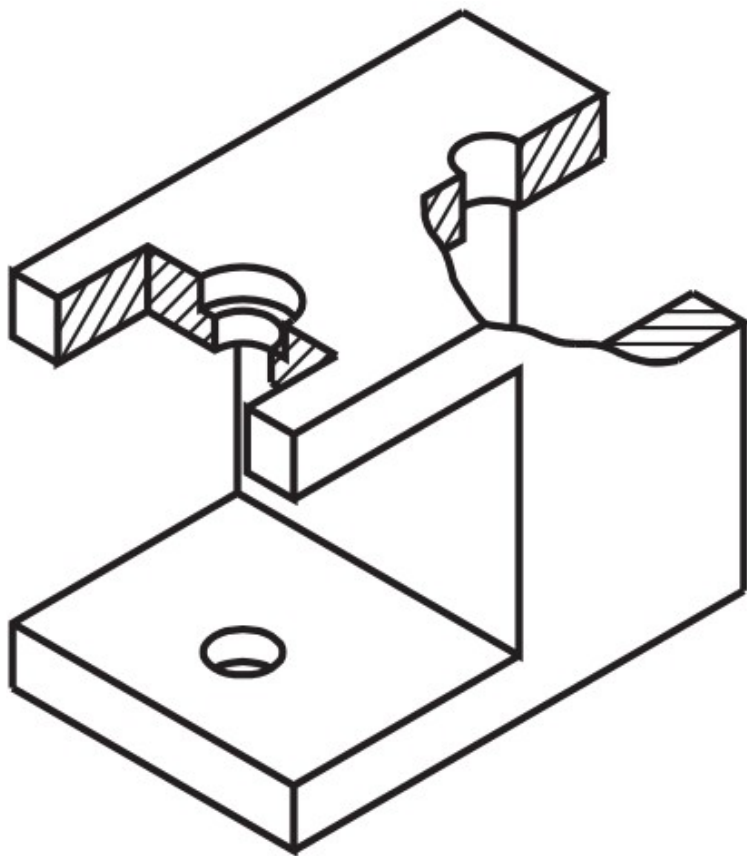
Corte parcial



Corte parcial



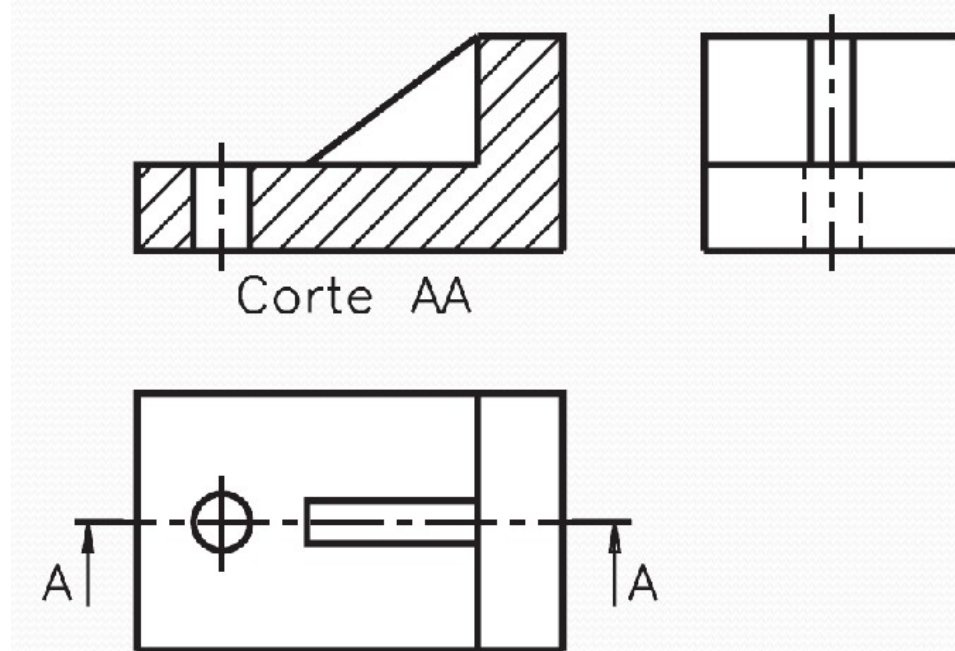
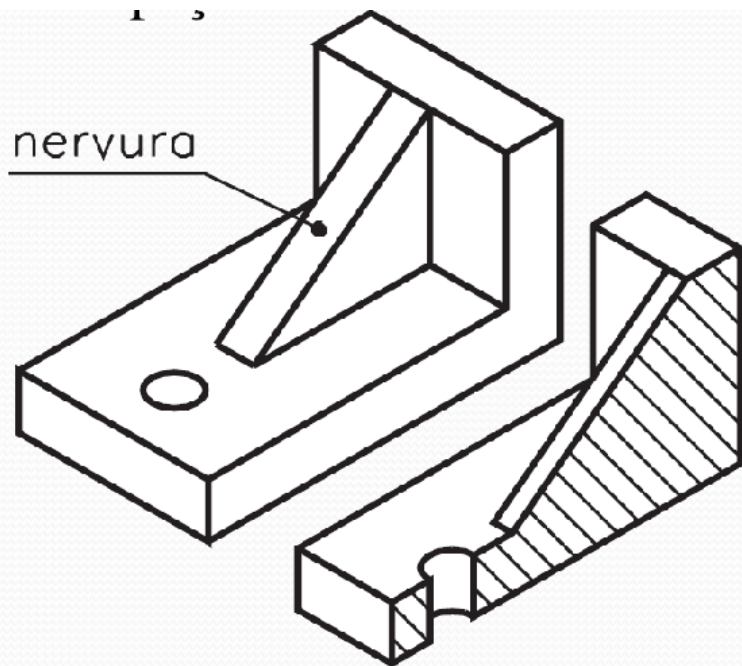
Corte parcial



Cortes – Observações

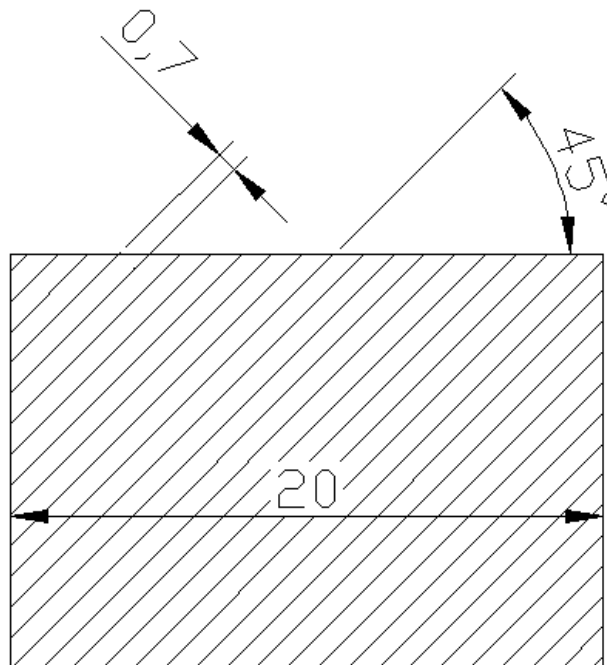
■ Nervuras:

- Evitando falsa impressão de densidade;



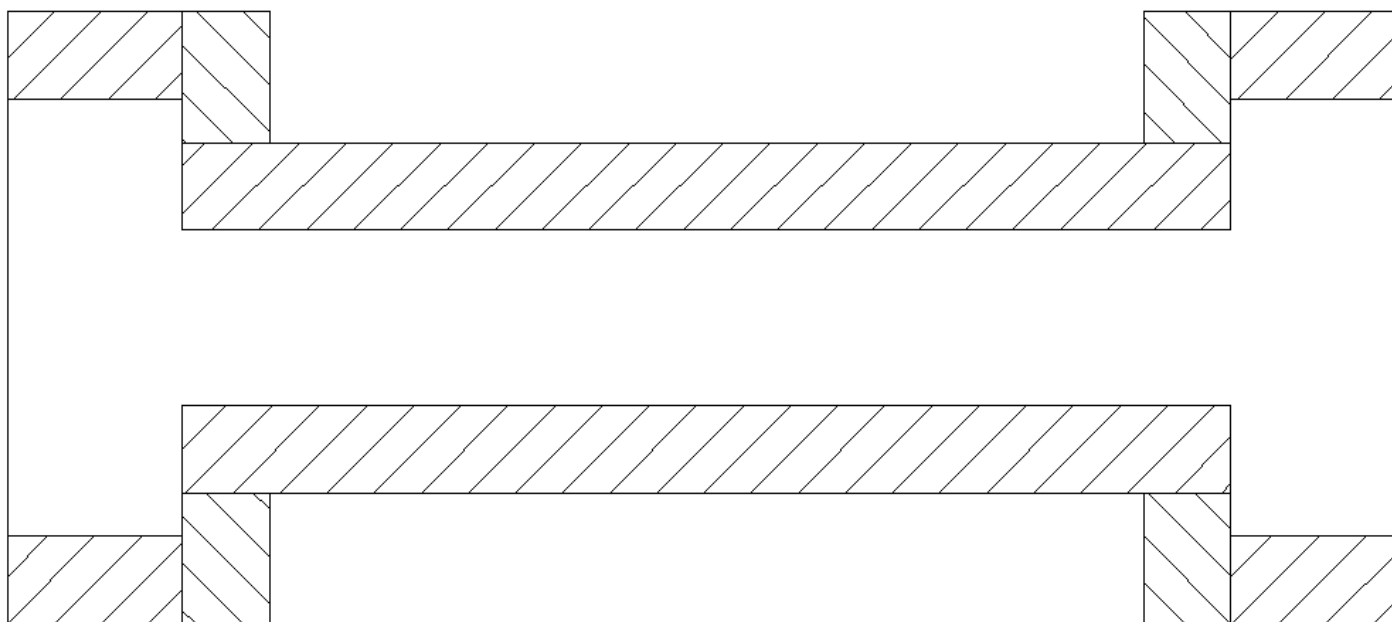
Cortes - Hachuras

- Inclinação preferível de 45
- Espaçamento mínimo 0.7mm;
- Interromper hachura em volta de textos;



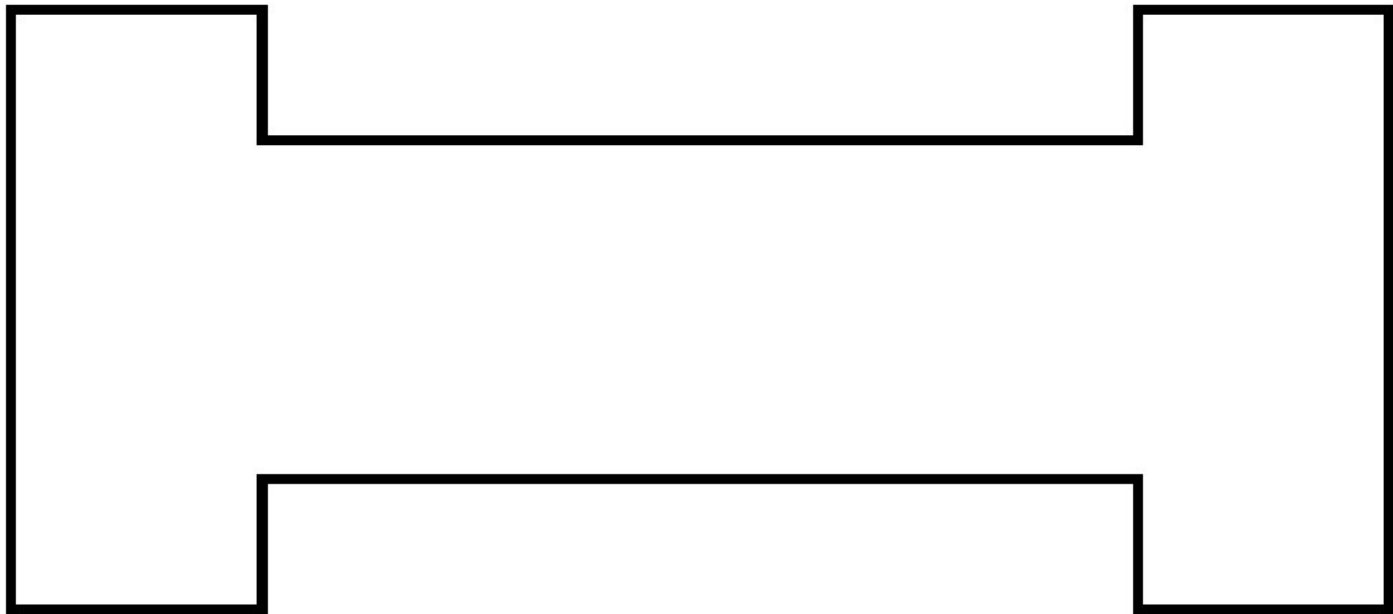
Cortes - Hachuras

- Peças adjacentes com hachuras opostas;
- Peças compostas com hachuras opostas;



Cortes - Hachuras

- Peças finas – preencher com preto;





Cortes - Hachuras

■ Indicação de material:

- ☐ Vidros / rochas;
- ☐ Concreto;
- ☐ Líquido;
- ☐ Madeira;
- ☐ Terra;