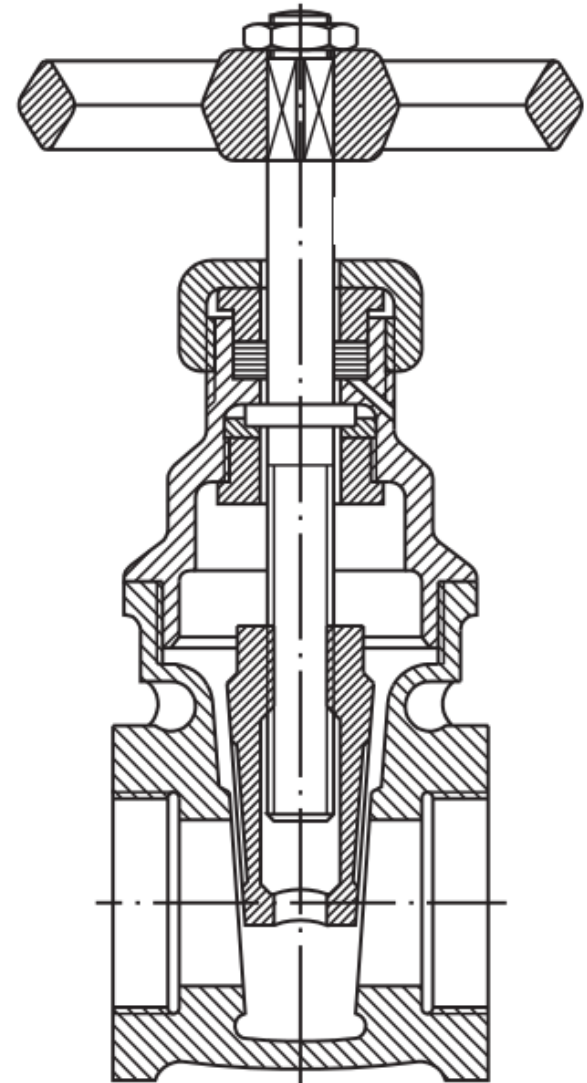
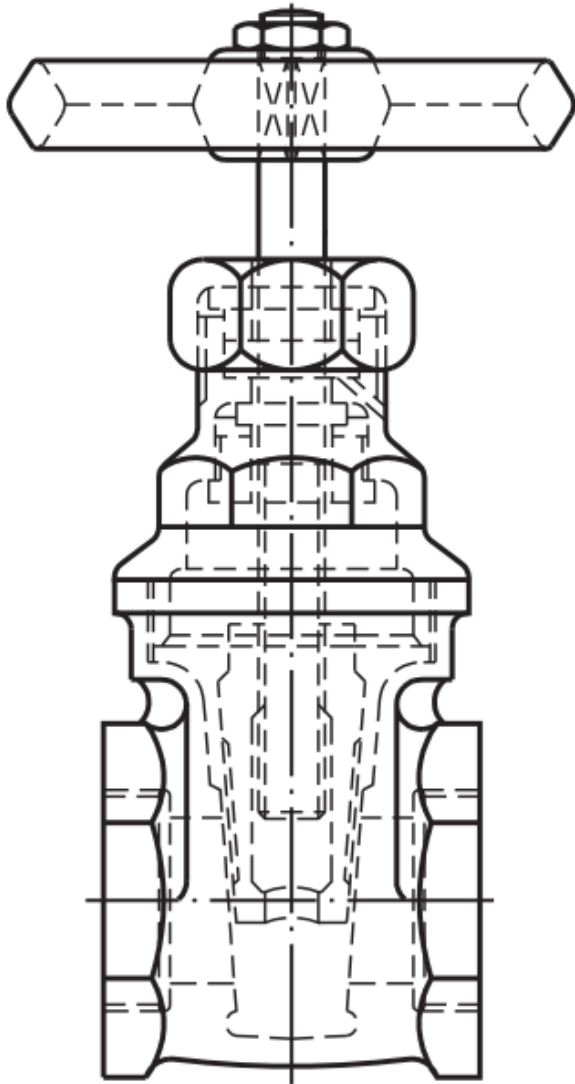




Projeto e Computação Gráfica

Pedro Mitsuo Shiroma

Cortes





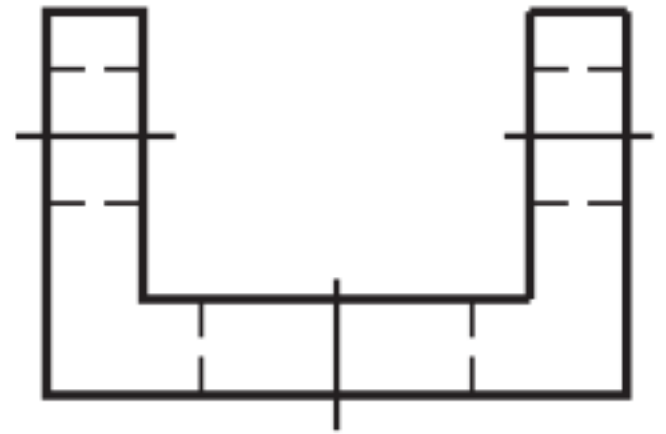
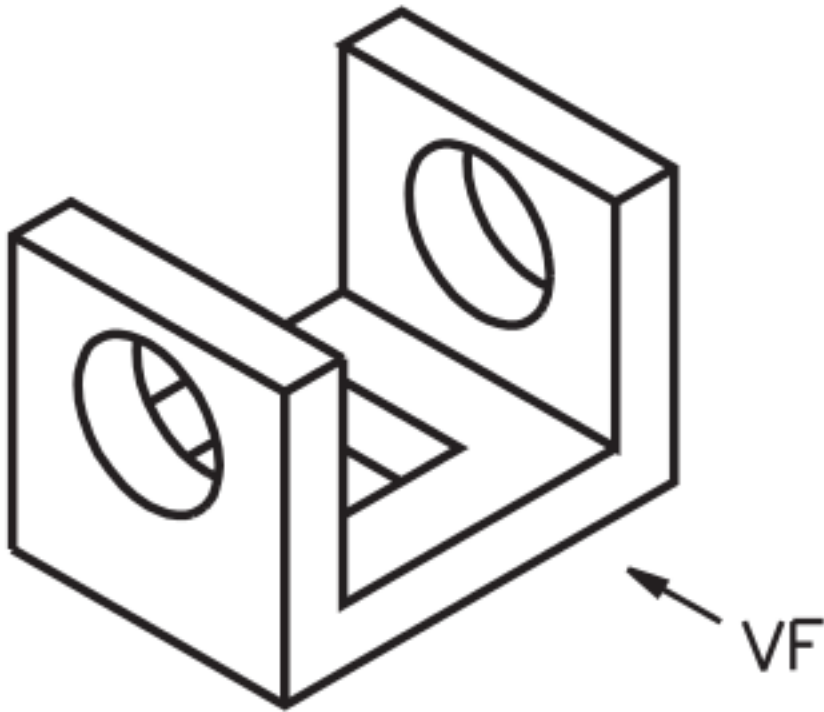
Cortes

- Mostrando o interior dos objetos;
- Evitando excesso de arestas invisíveis – difícil visualização;

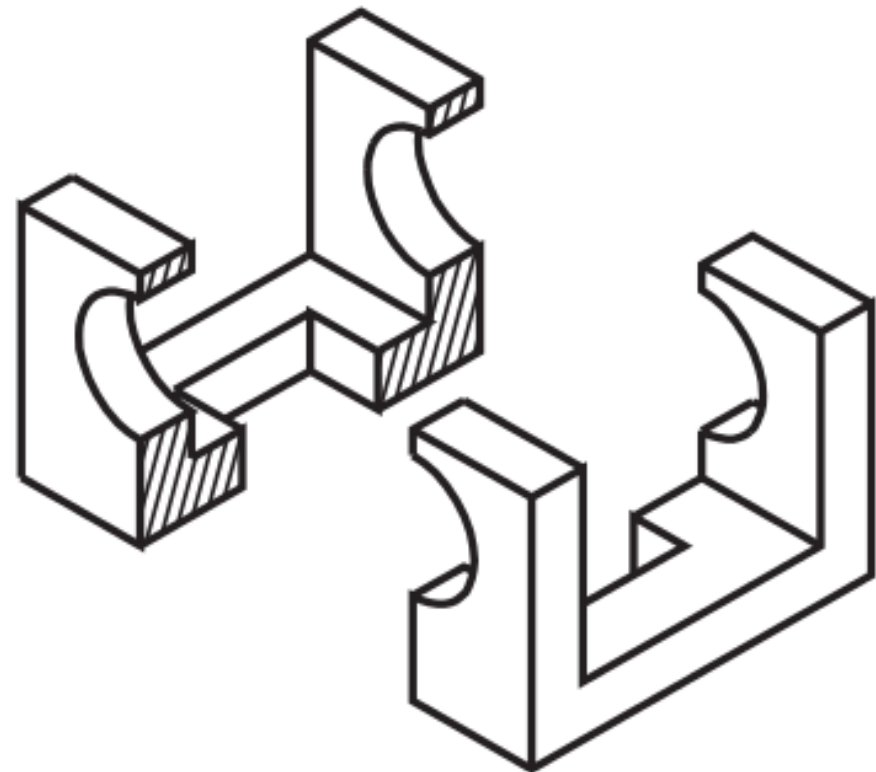
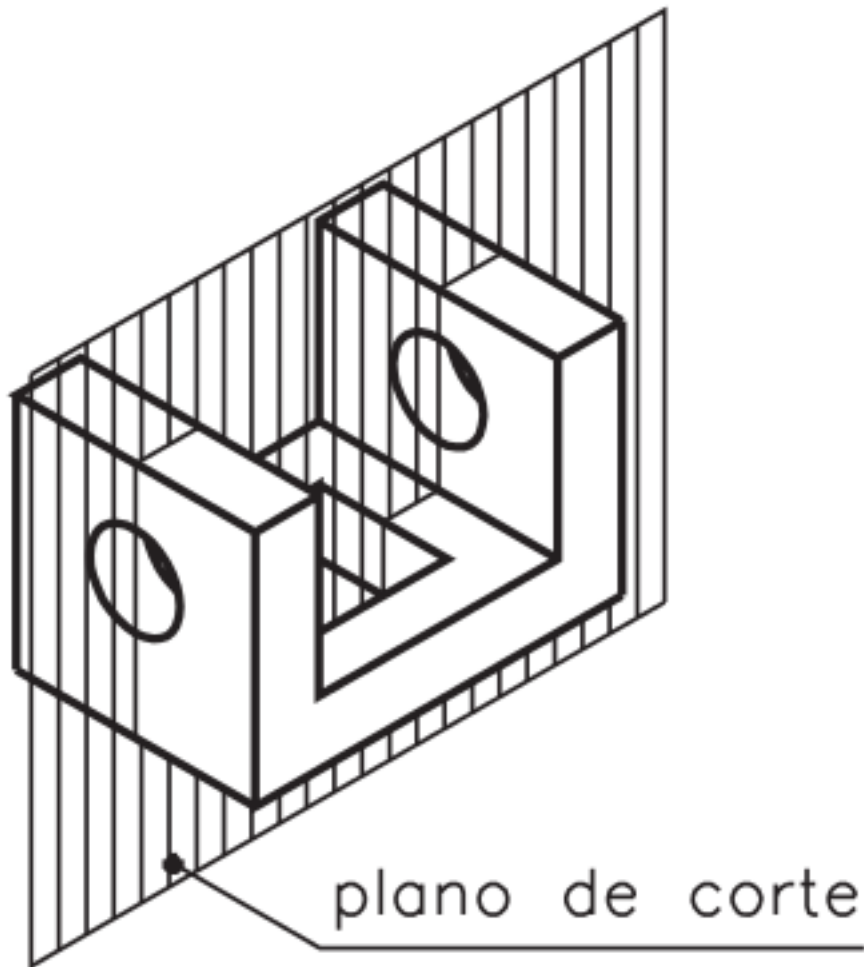
Leitura

- NBR 12.298, 10.067;
- GIESECKE, F. E., et al, Comunicação Gráfica Moderna
 - Capítulo 7
- Apostila Telecurso (aulas 11 à 15)

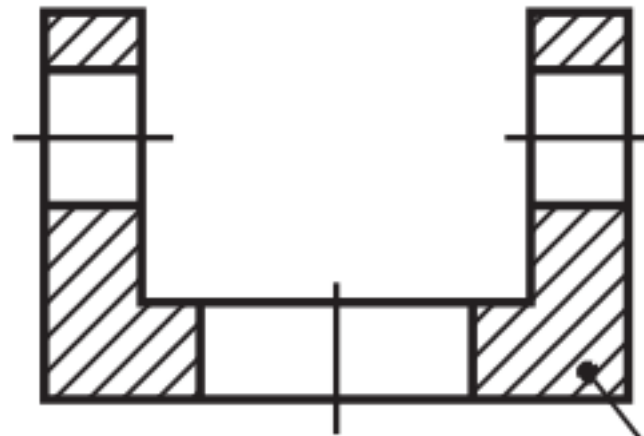
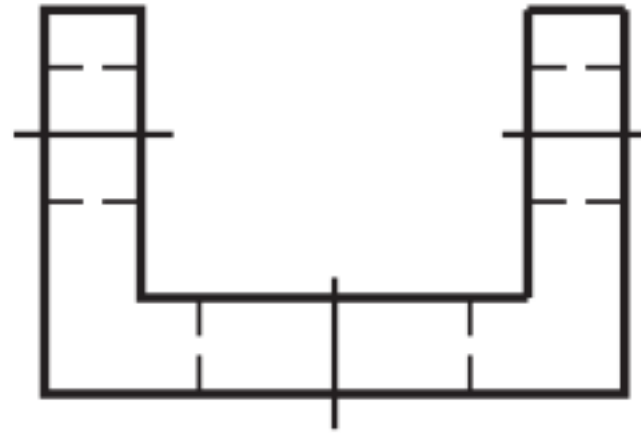
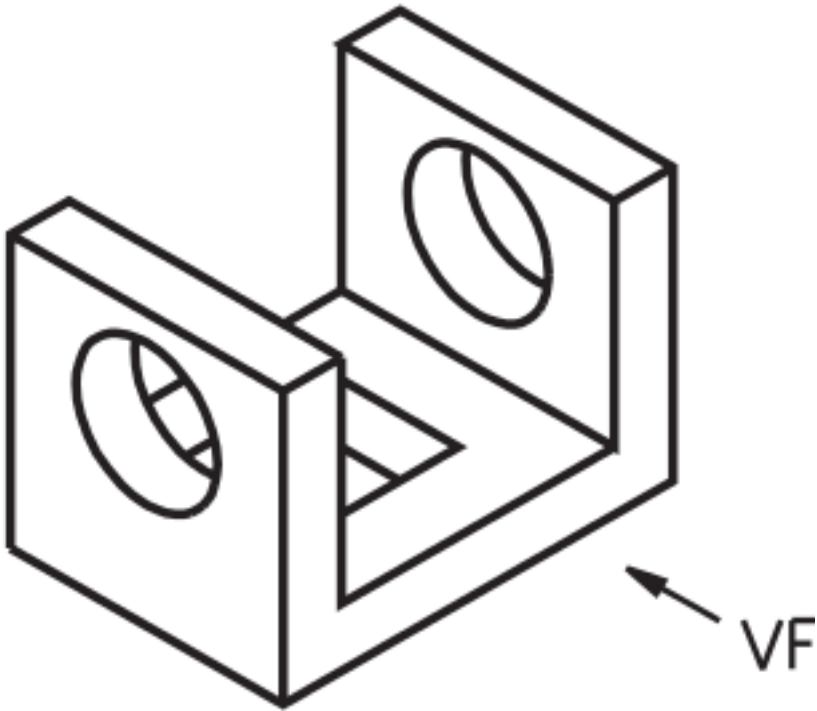
Cortes



Cortes

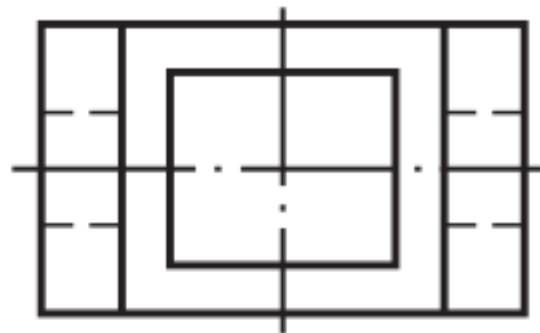
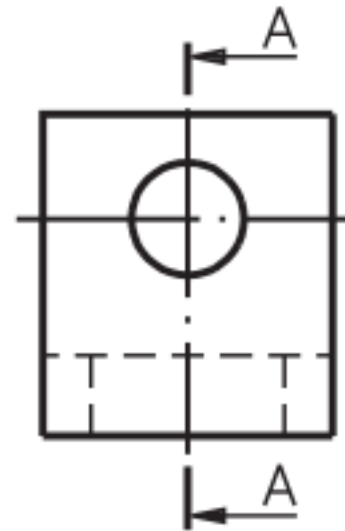
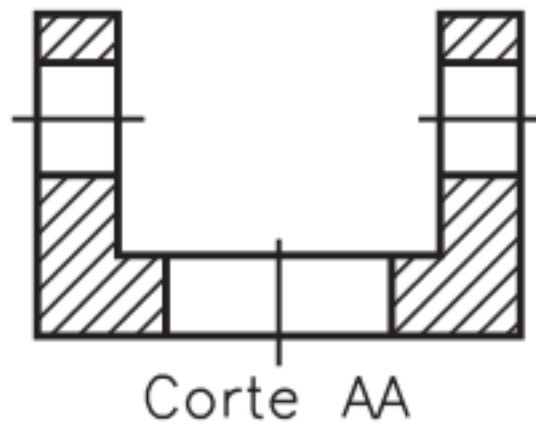


Cortes



hachuras

Cortes

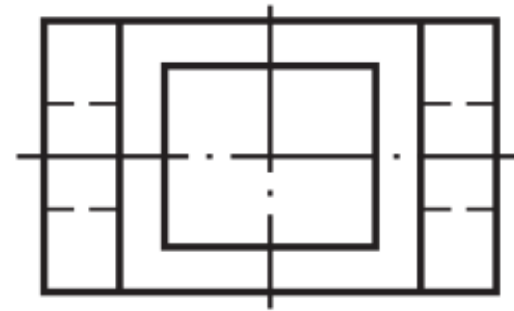
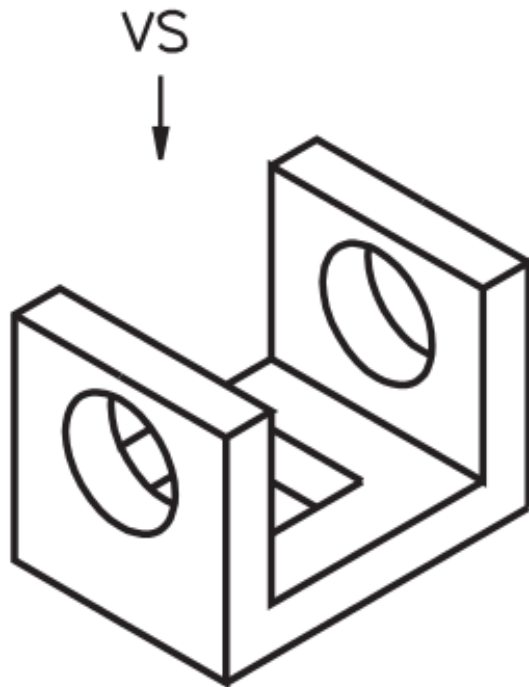




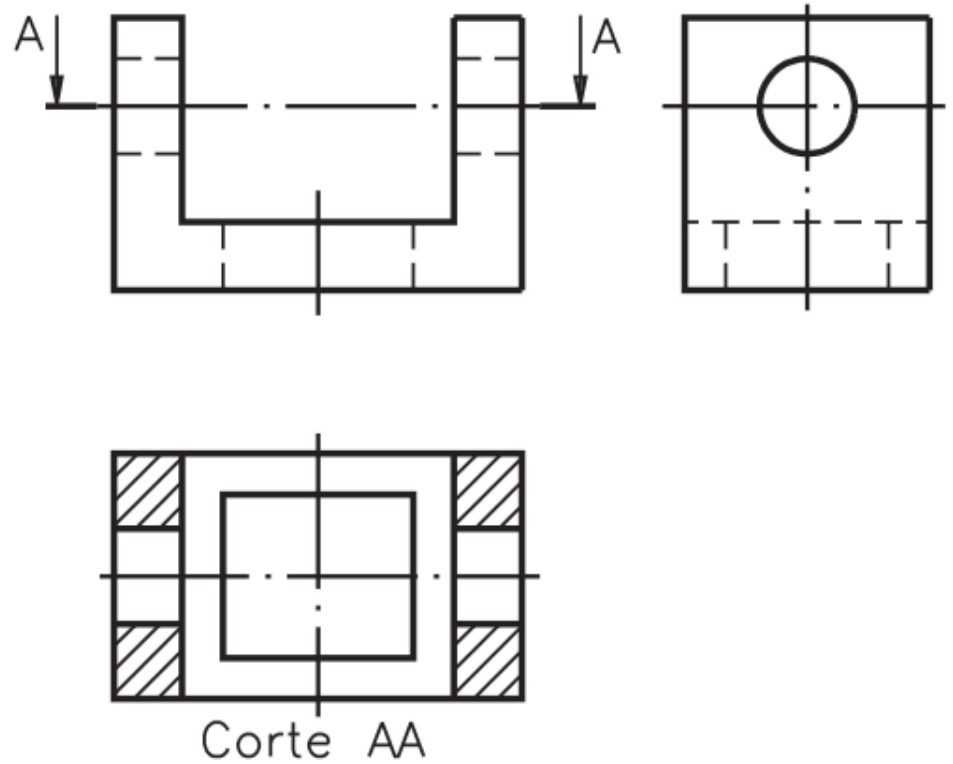
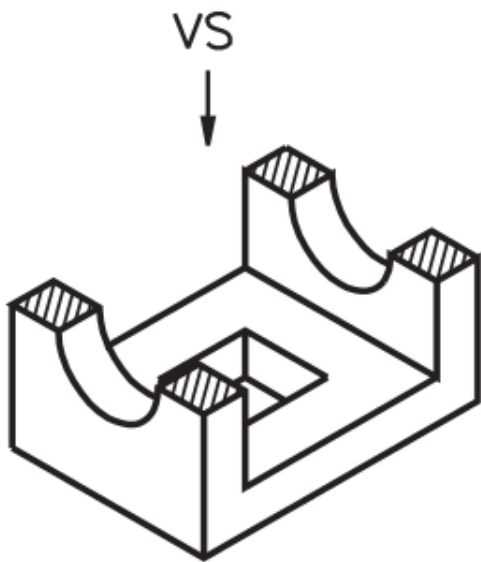
Cortes

- Evita-se a representação de linhas ocultas no corte;
- Hachurar as área cortada pelo plano de corte;

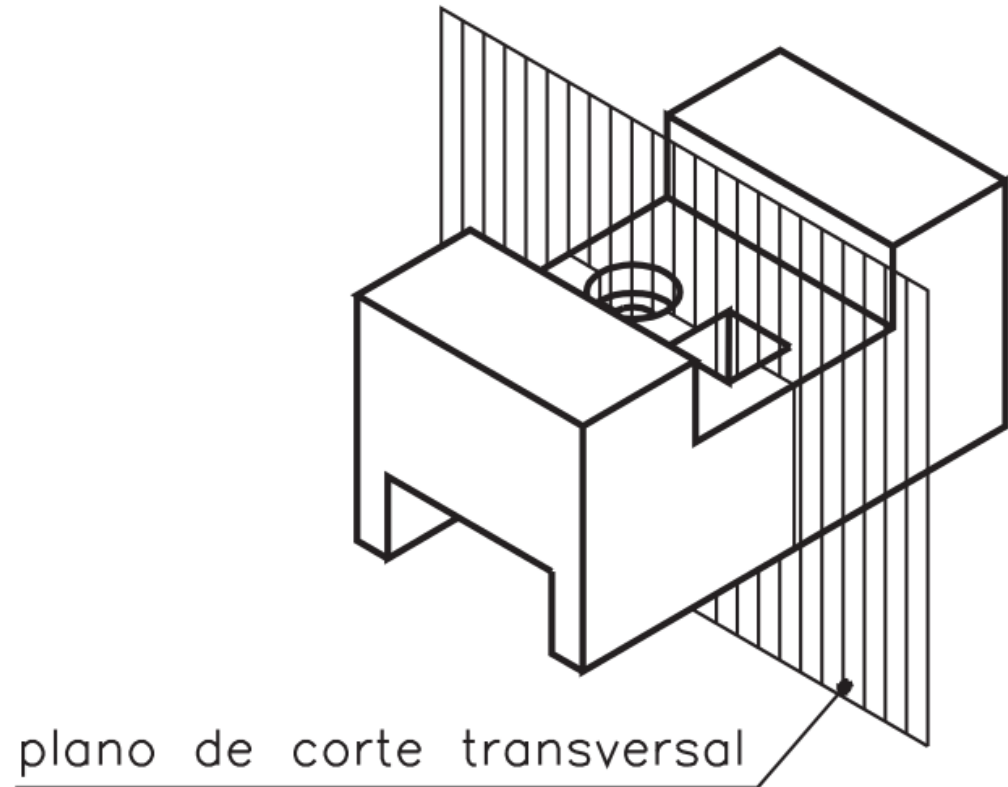
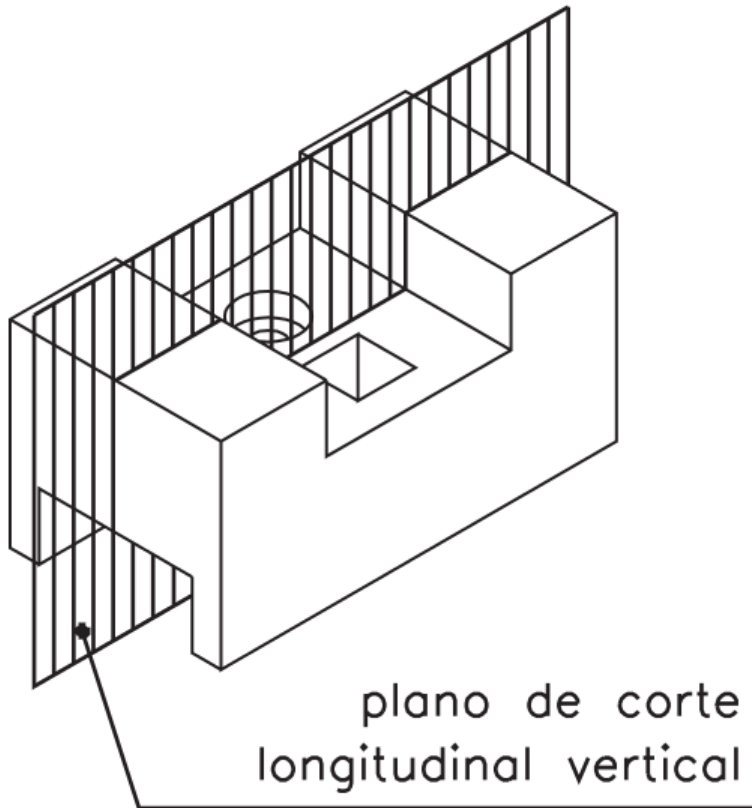
Cortes



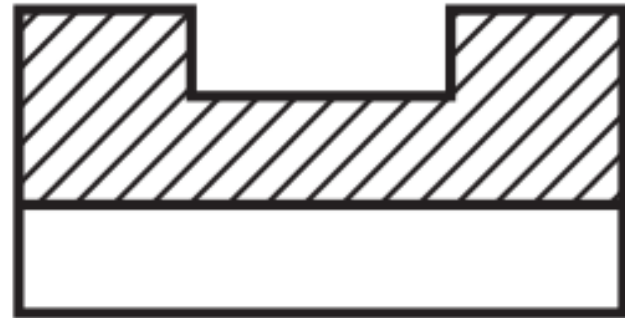
Cortes



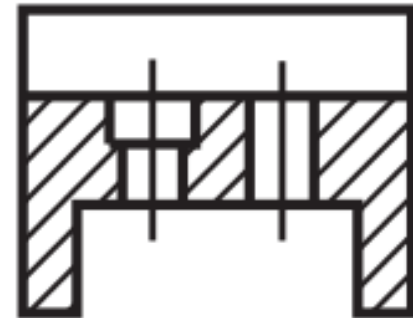
Cortes



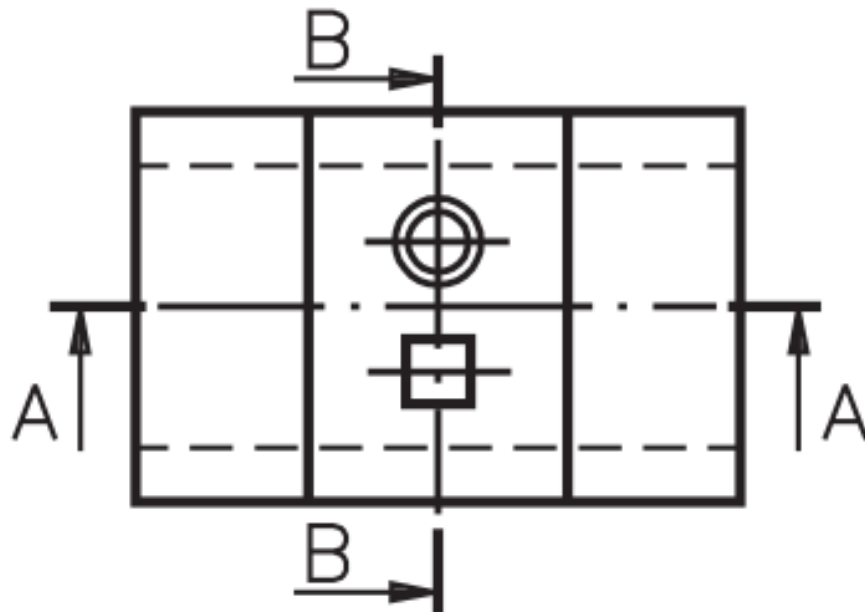
Cortes



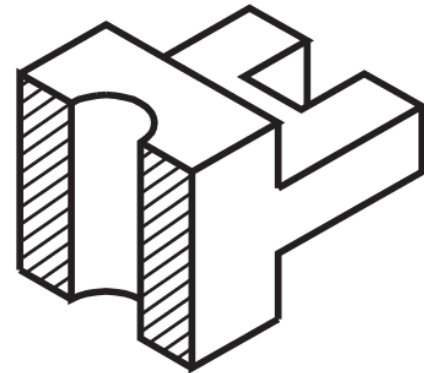
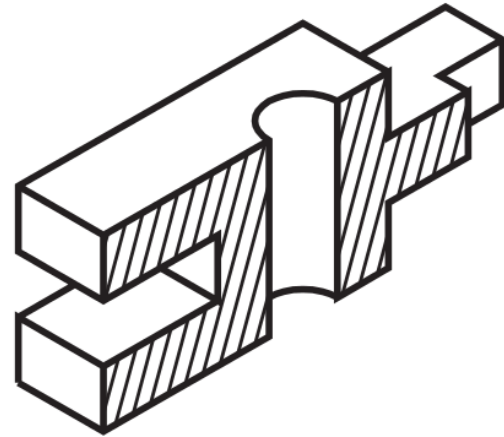
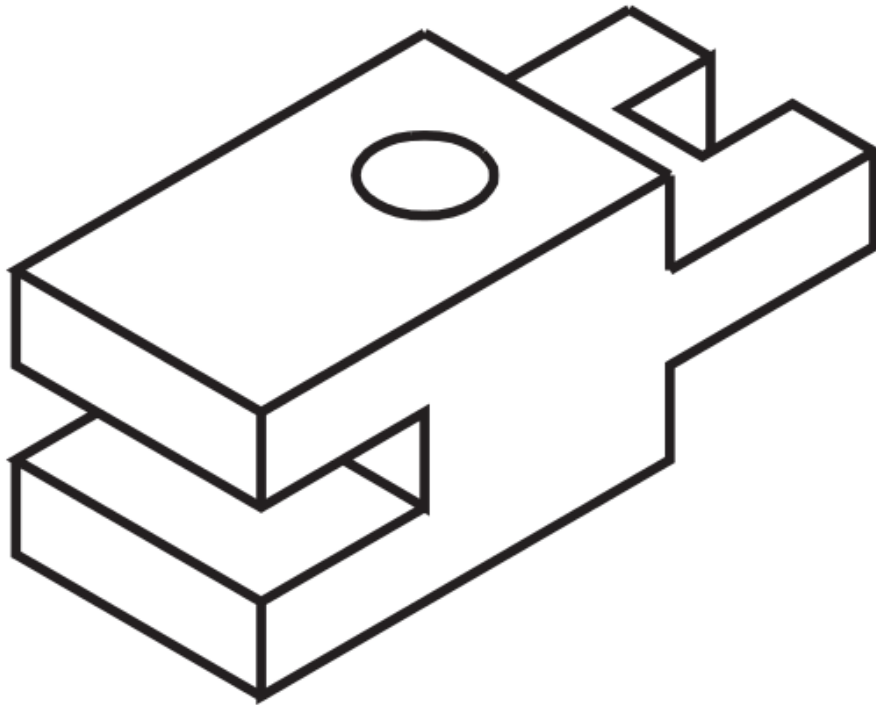
Corte AA



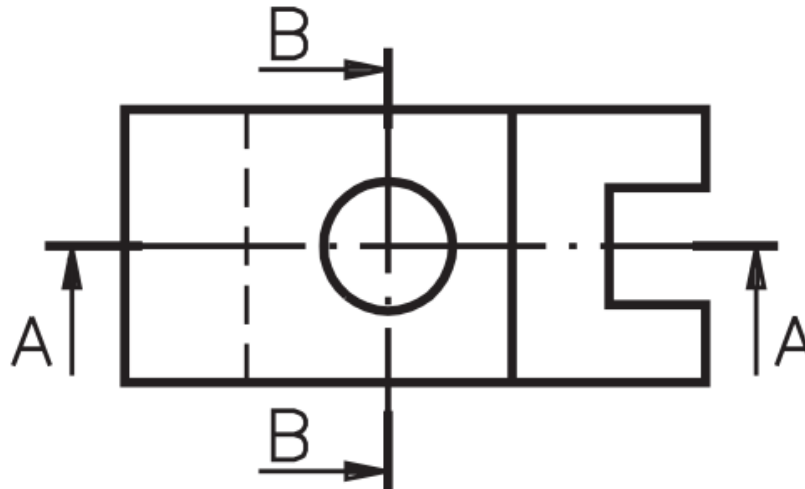
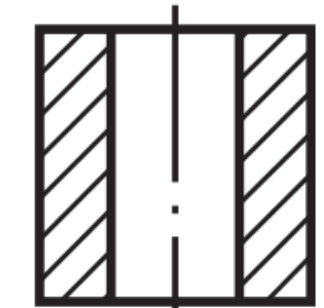
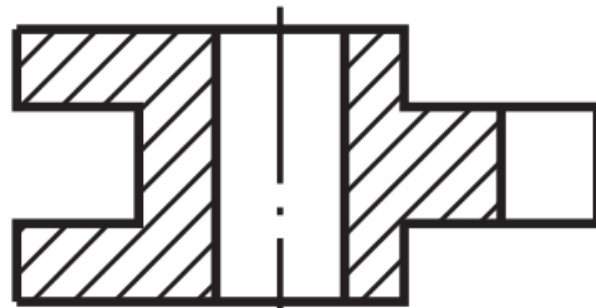
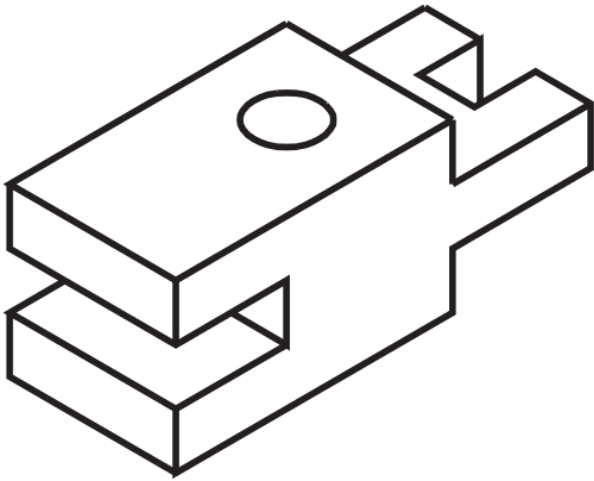
Corte BB



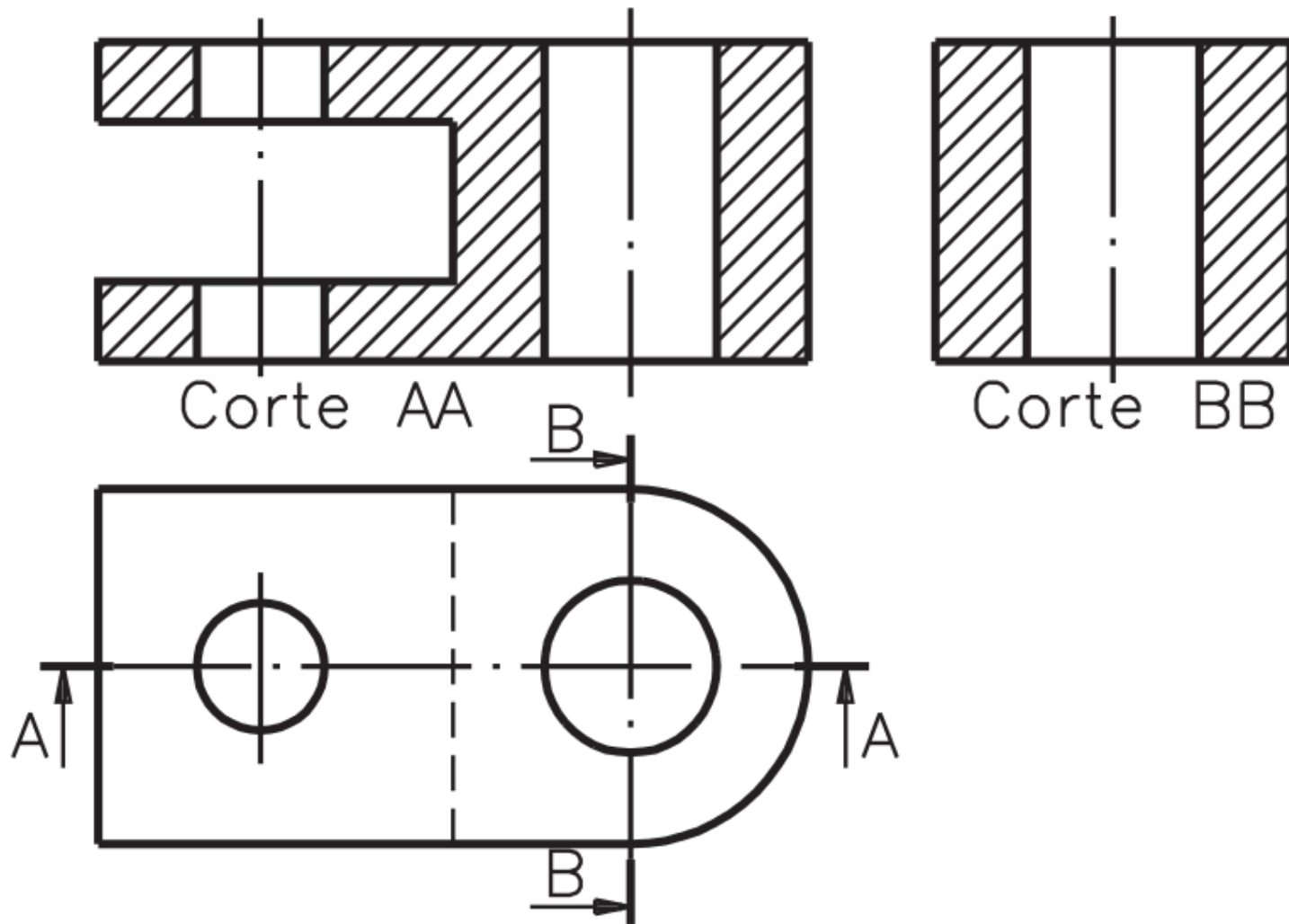
Cortes



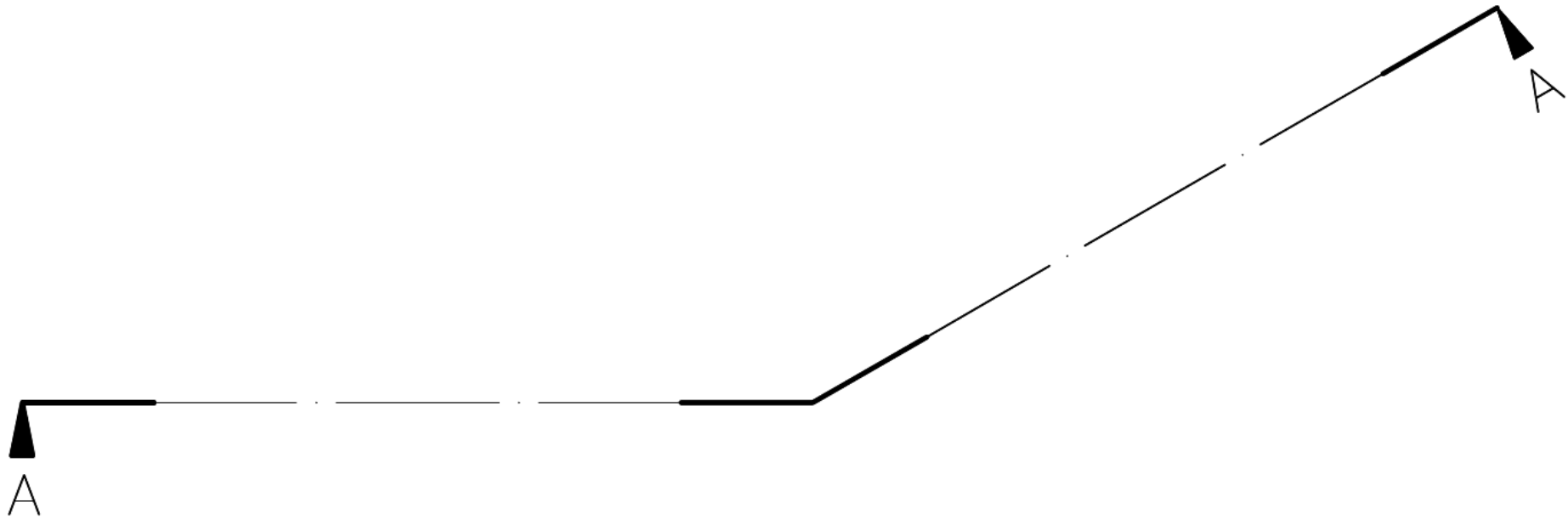
Cortes



Cortes



Linha de corte



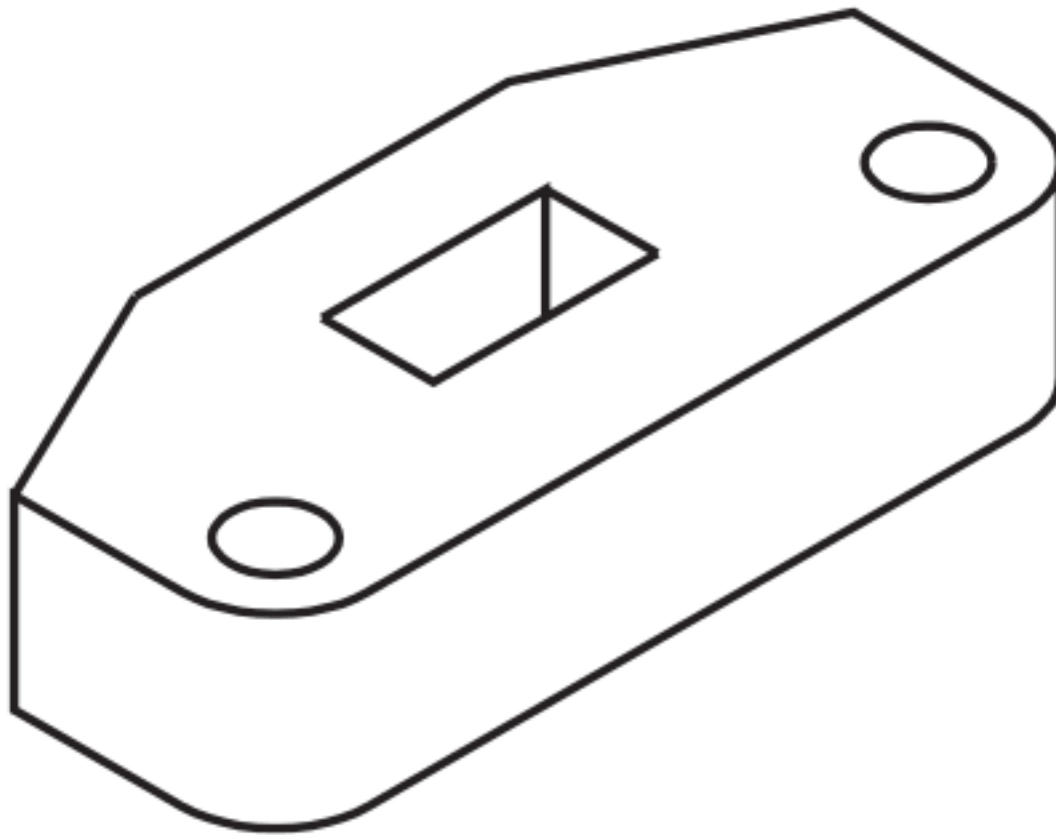
Cortes - Tipos

- Corte pleno;
- Corte composto:
 - Mais de 1 plano;
- Meio corte:
 - Plano de corte passando até metade do objeto
- Corte parcial:
 - Mostrando apenas detalhe de um objeto;

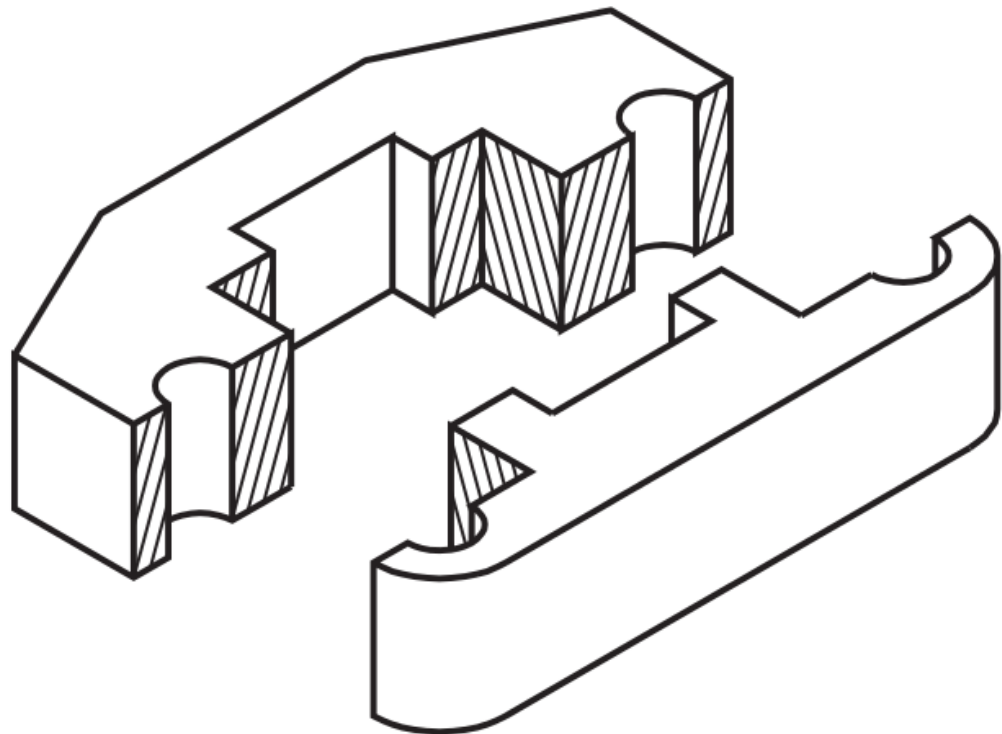
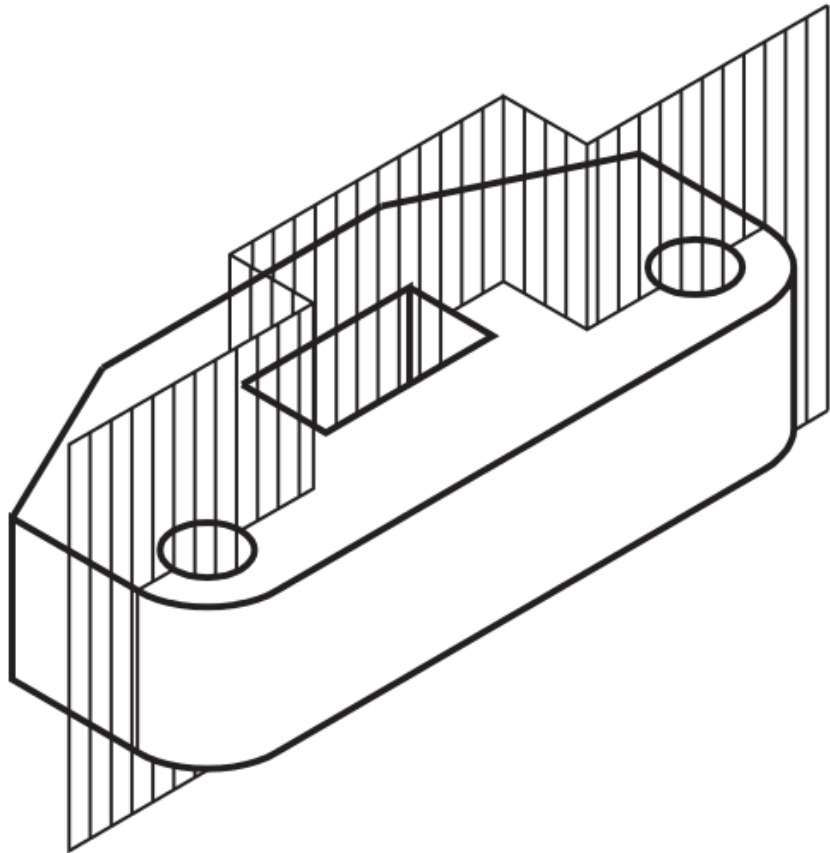


Corte composto

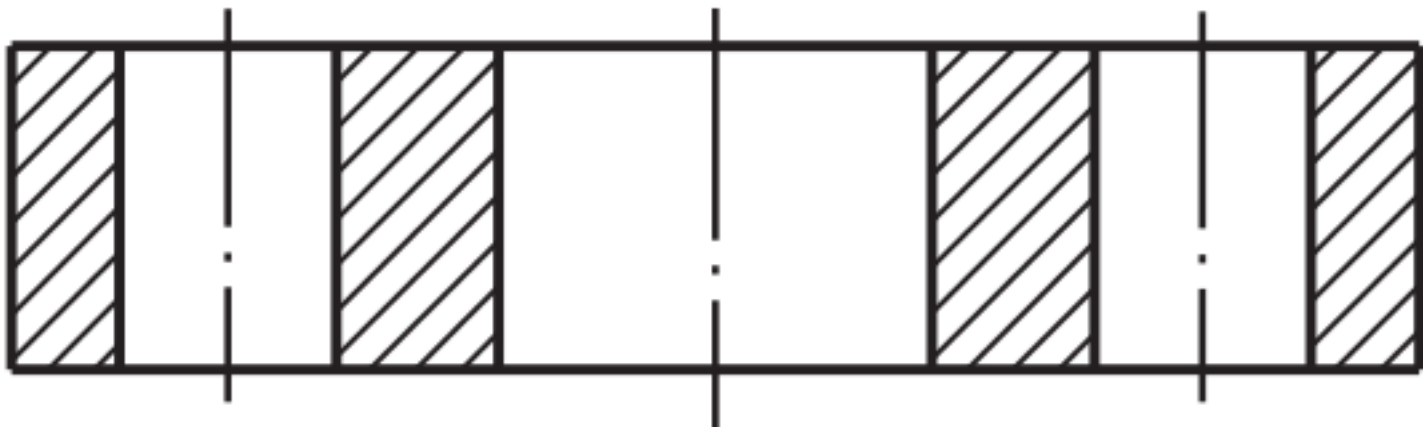
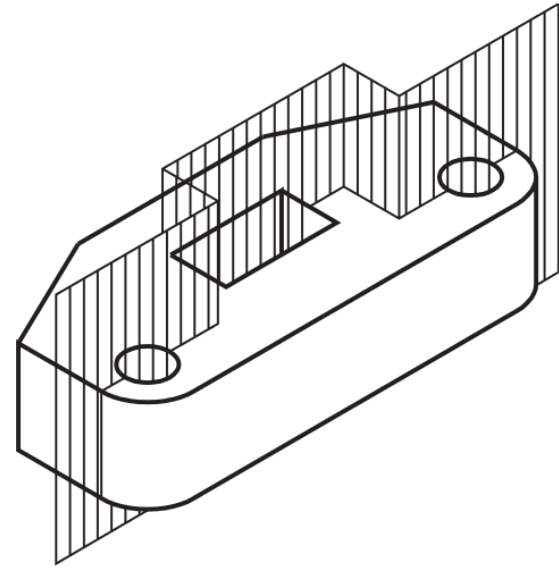
Corte composto



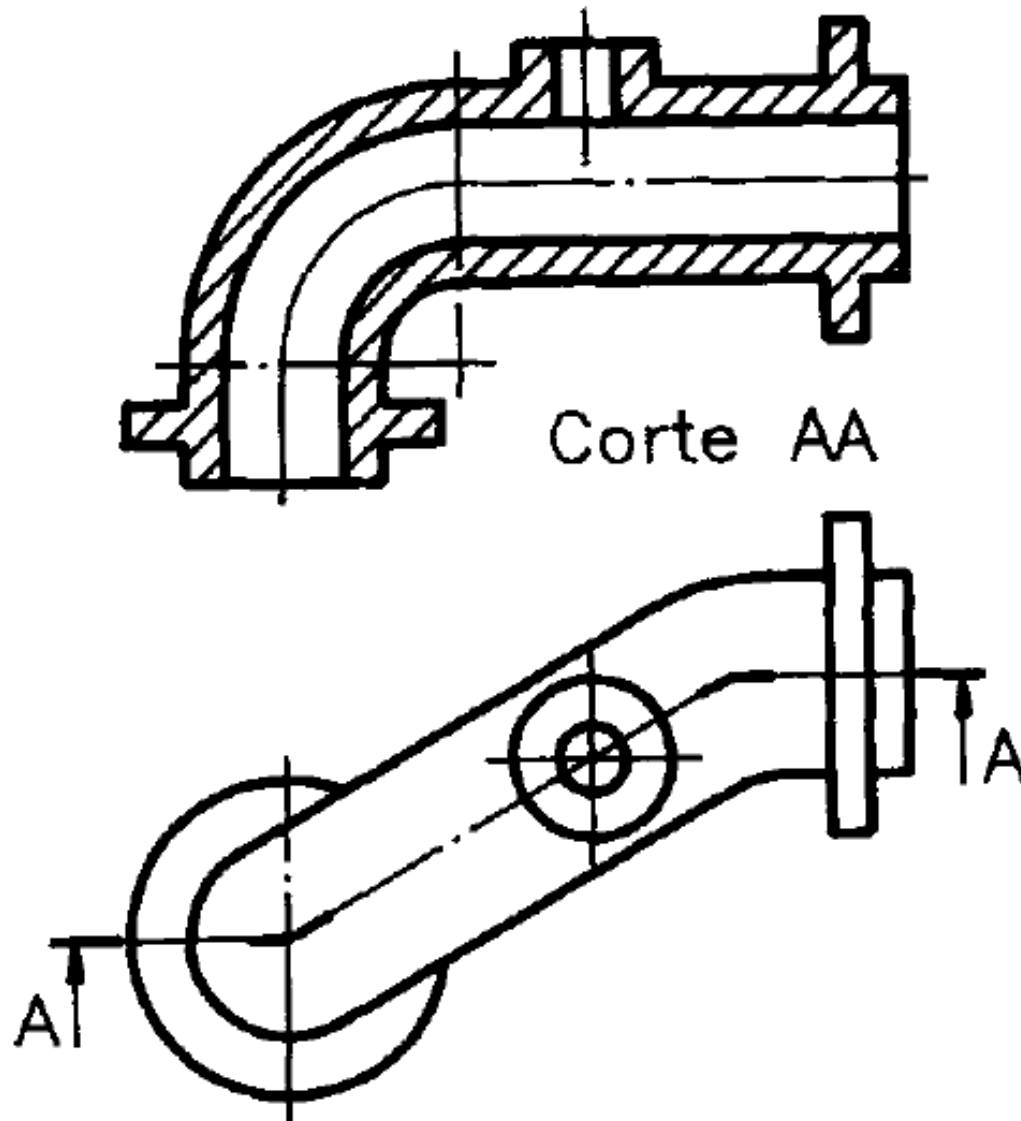
Corte composto



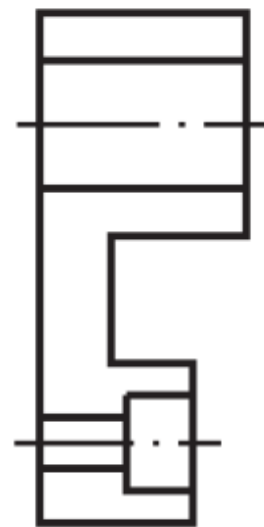
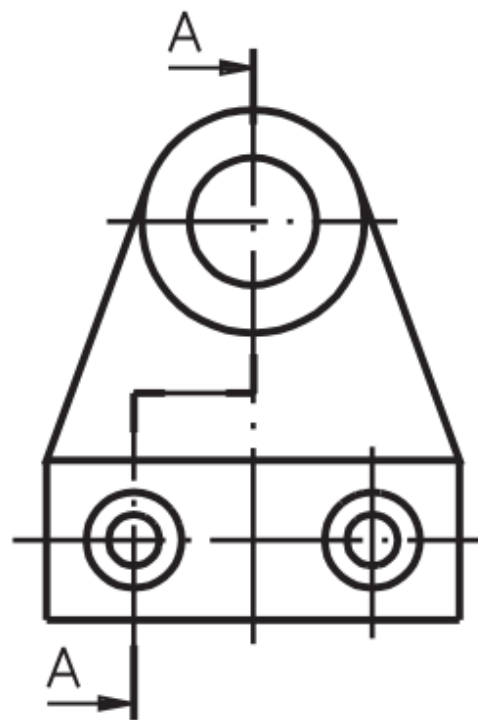
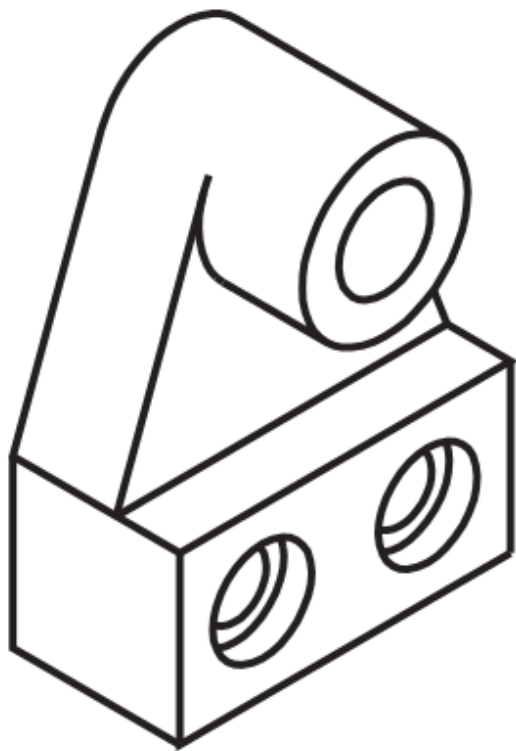
Corte composto




Cortes composto



Corte composto - Exercício



Corte AA

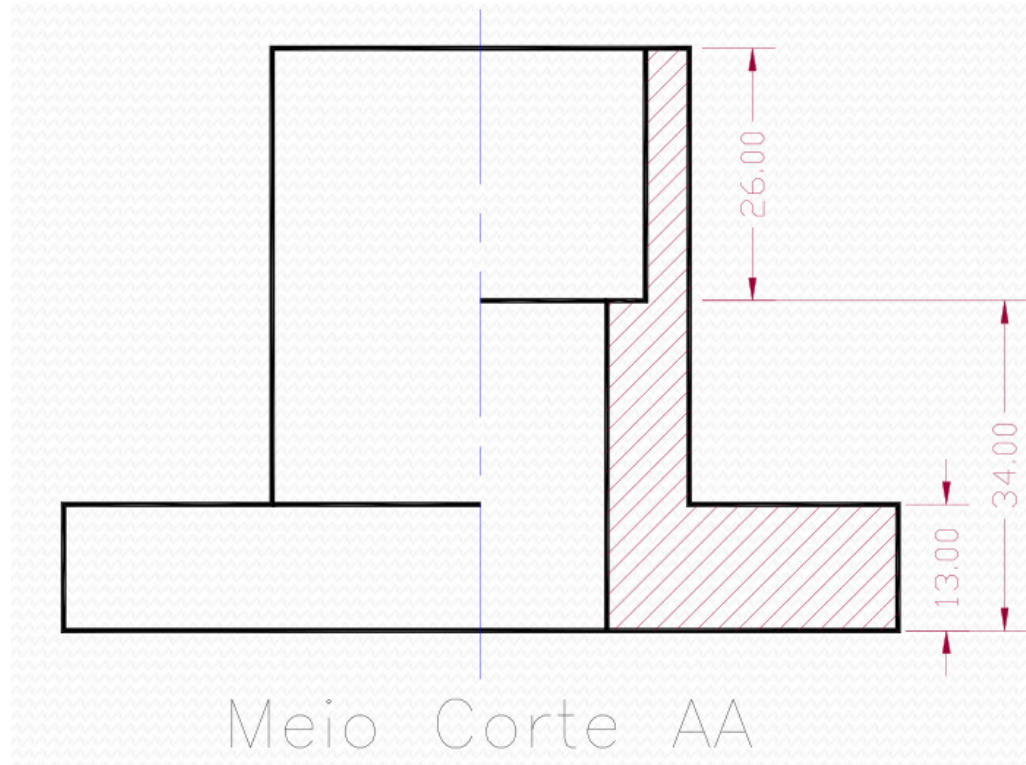


Meio-corte

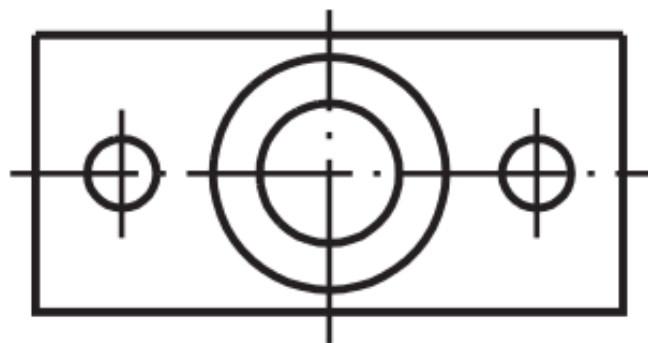
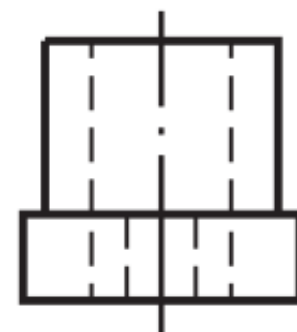
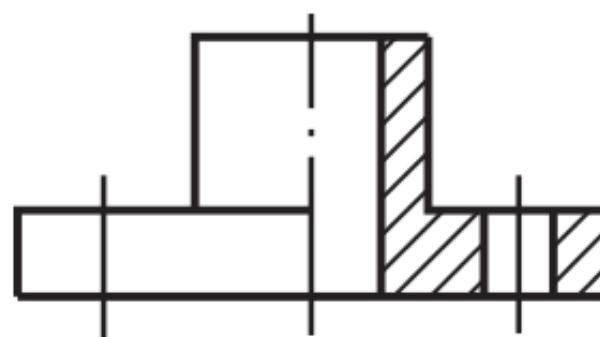
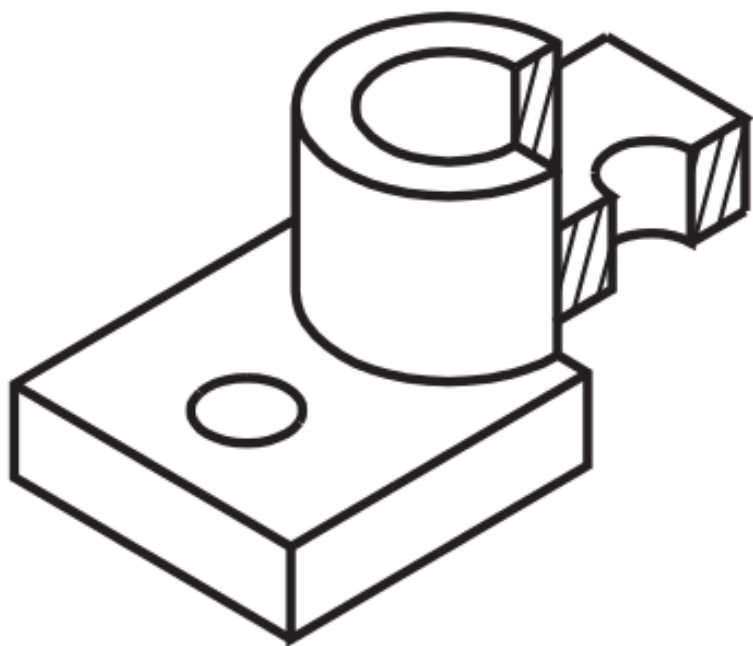
Meio-corte

- Meio corte:

- Plano de corte passando até metade do objeto

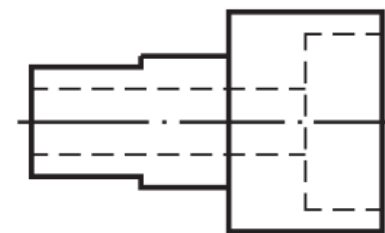
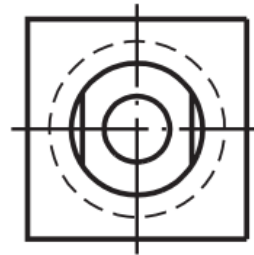
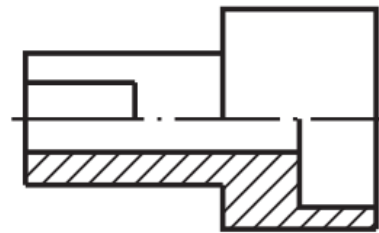
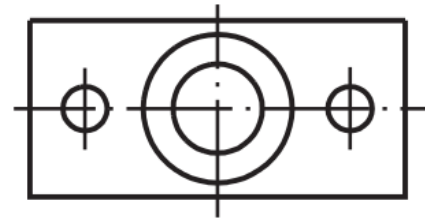


Meio-corte

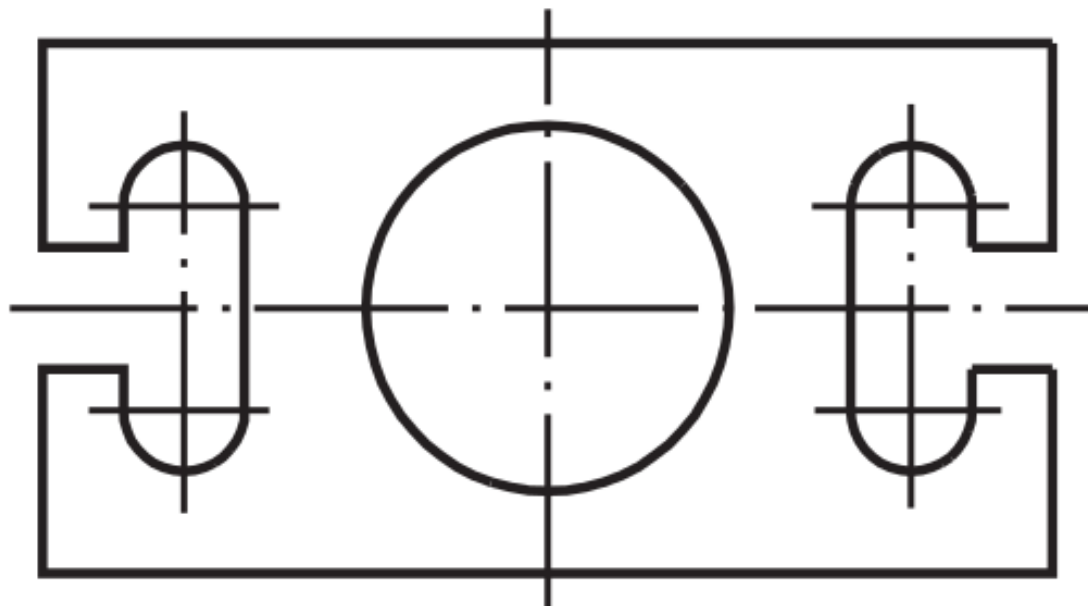


Meio-corte

- Corte no lado esquerdo ou embaixo
- Linha de simetria no centro
- Não representar linhas ocultas do lado direito
- Representar centro de furos
- Não é preciso indicar planos de corte



Meio-corte - Exercício





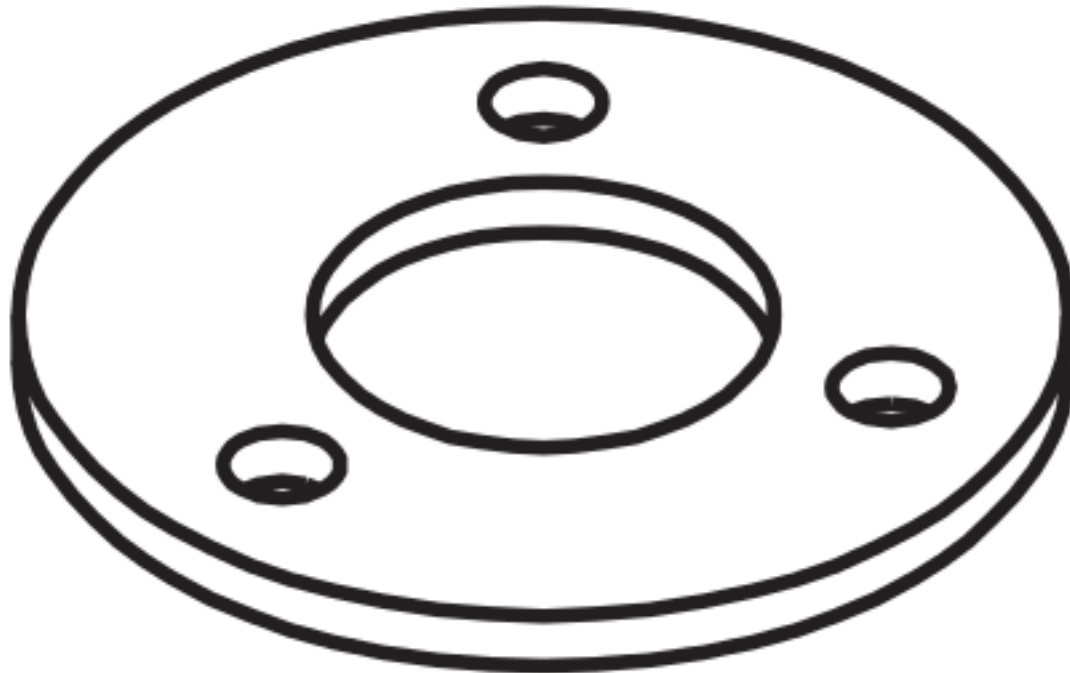
Corte rebatido

Corte rebatido

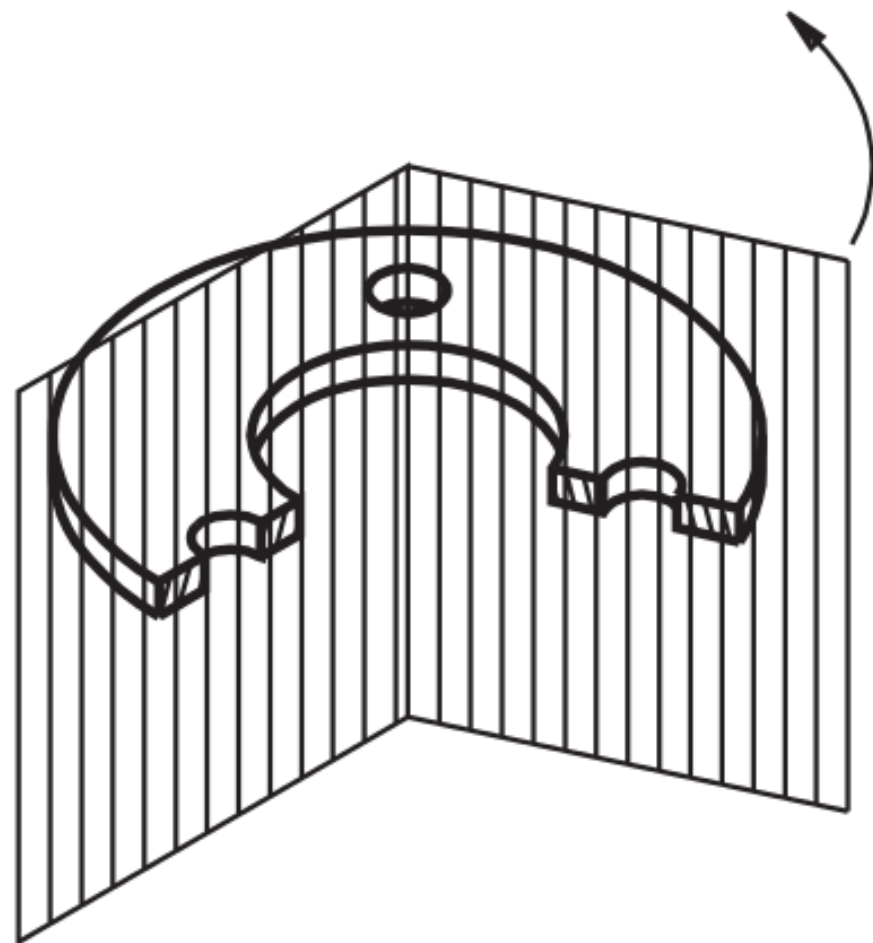
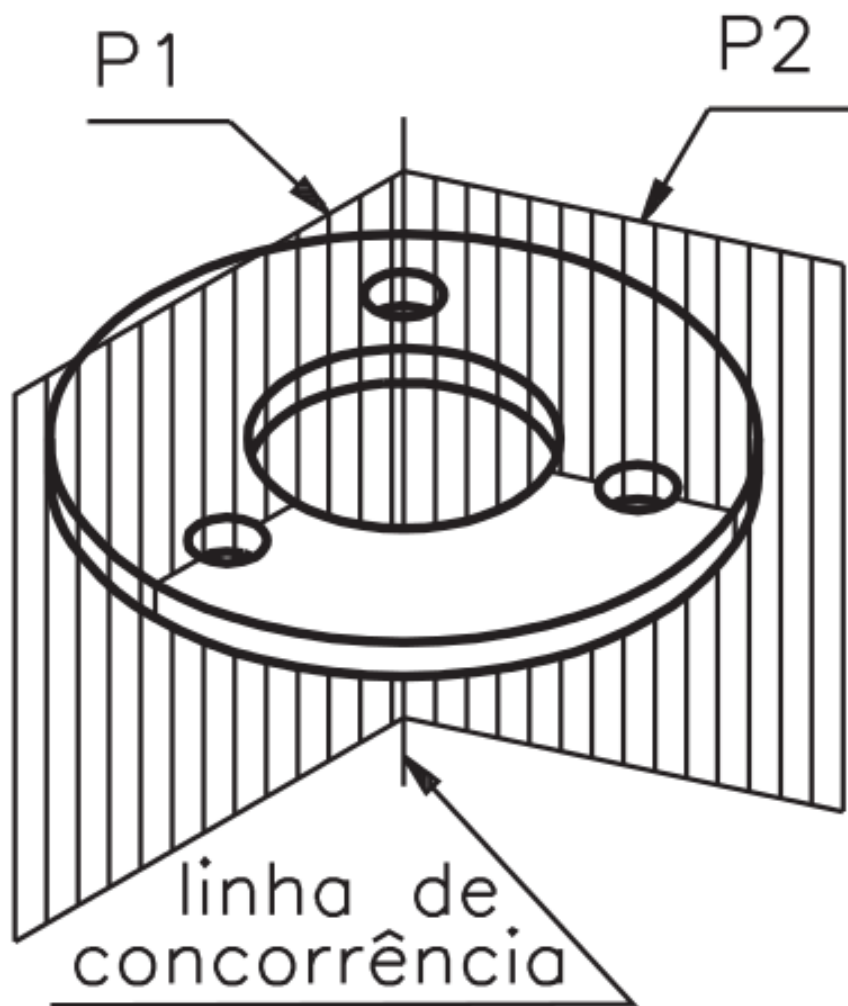
- Cortes rebatidos:

- Incluyendo elementos inclinados (dobrando o plano de corte)

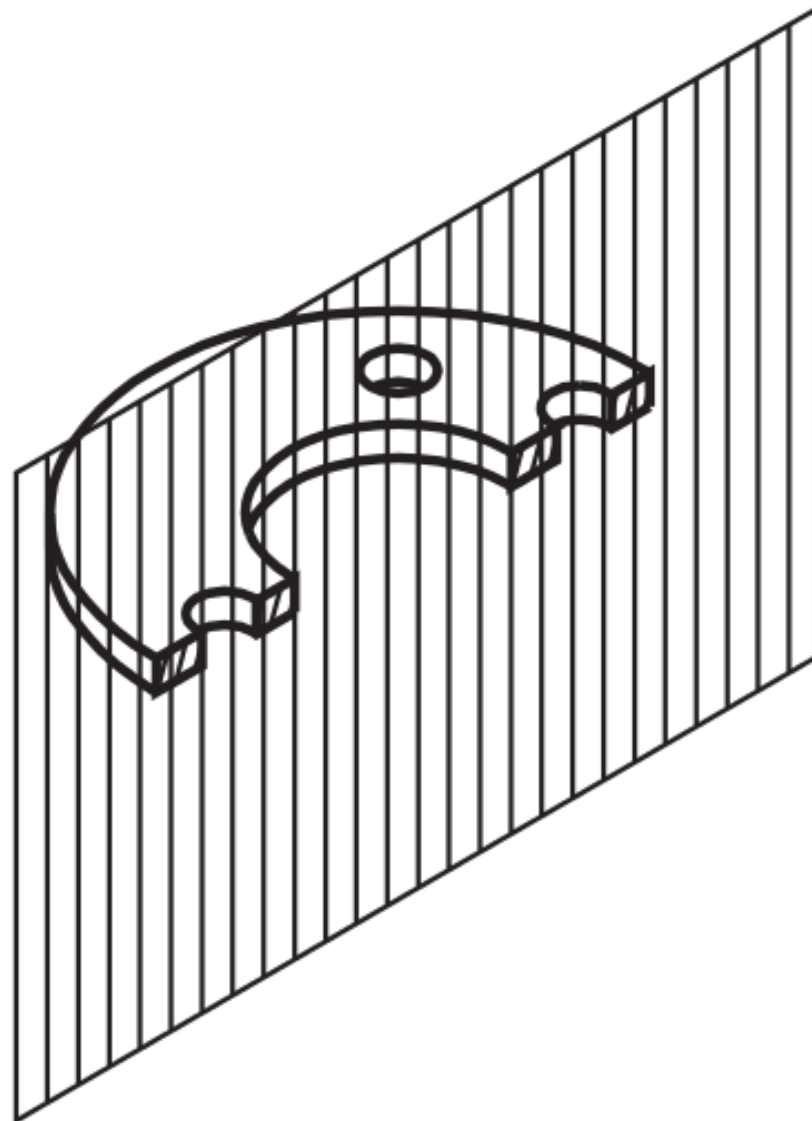
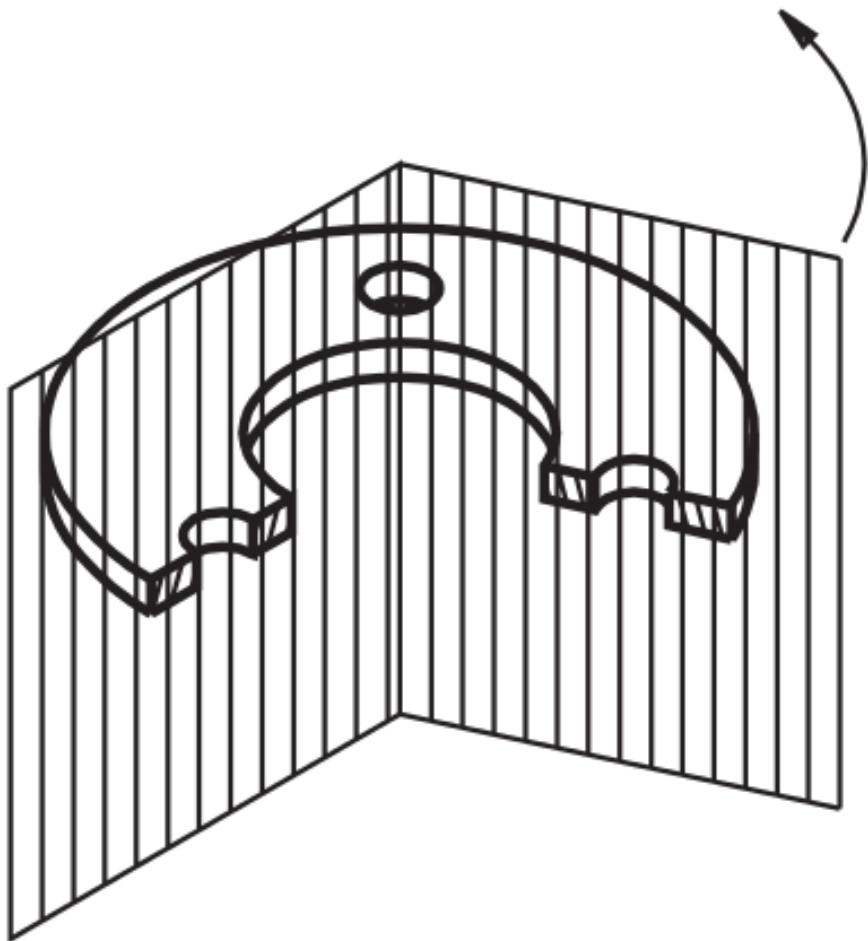
Corte rebatido



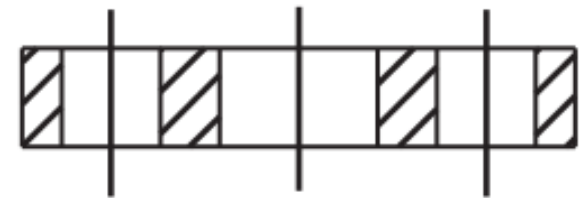
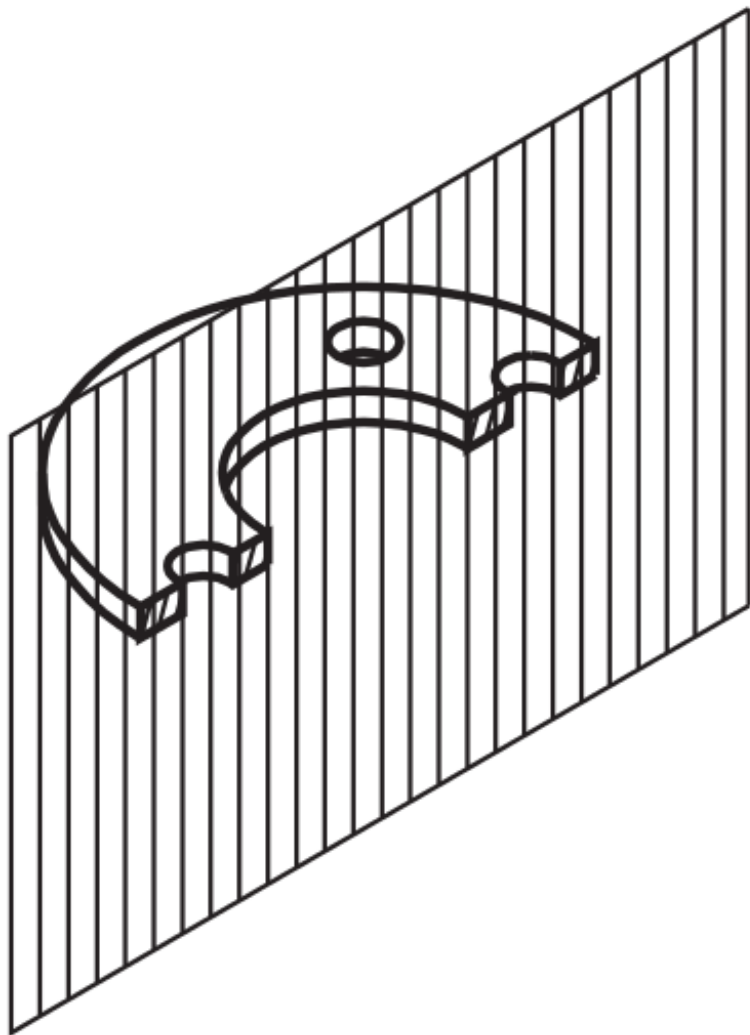
Corte rebatido



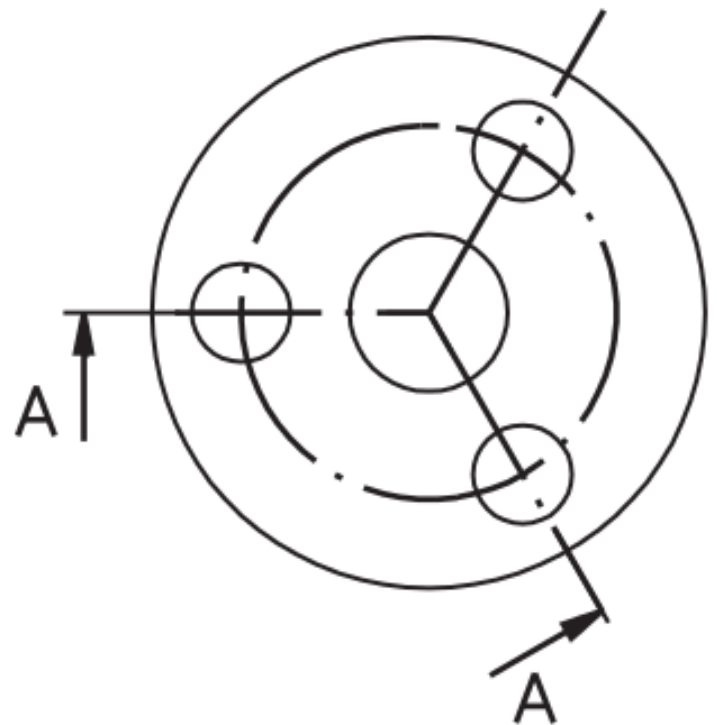
Corte rebatido



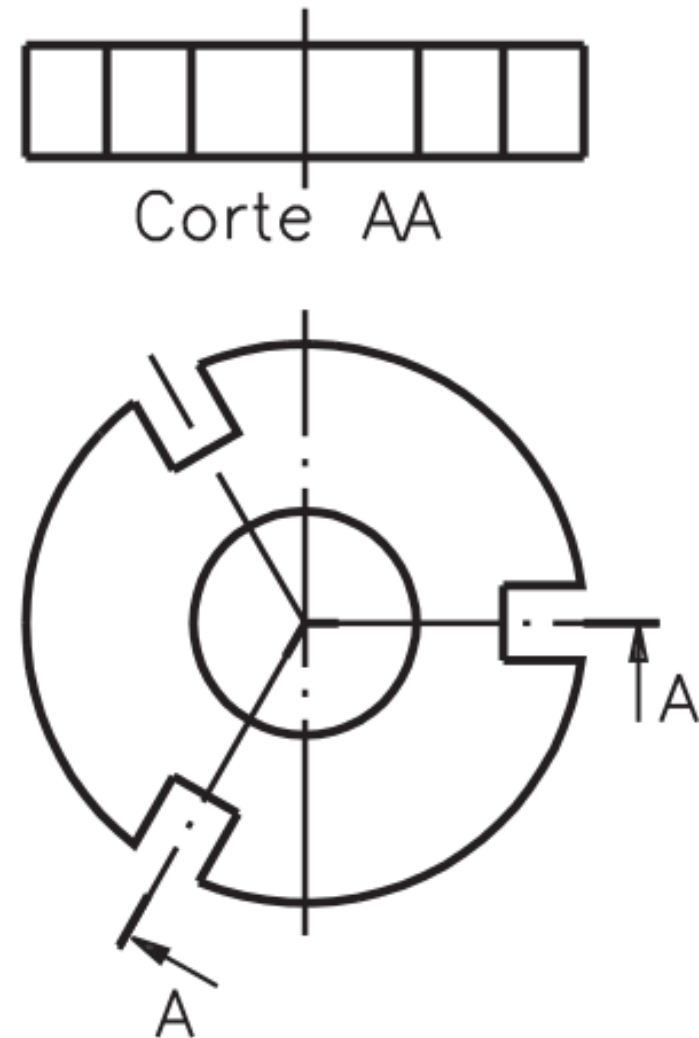
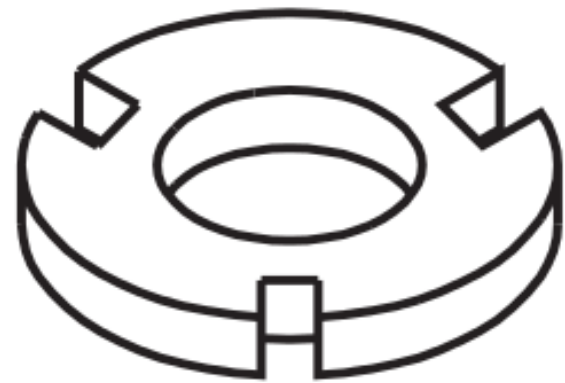
Corte rebatido



Corte AA



Corte rebatido

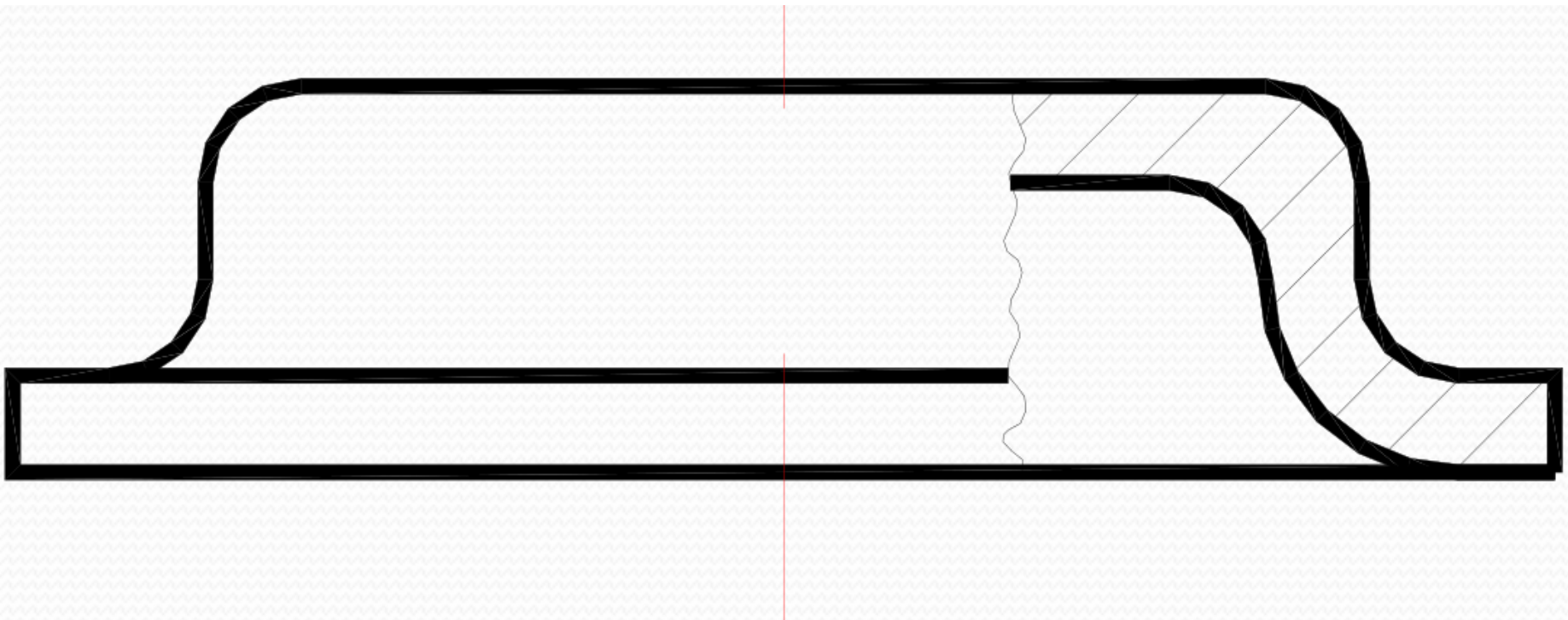




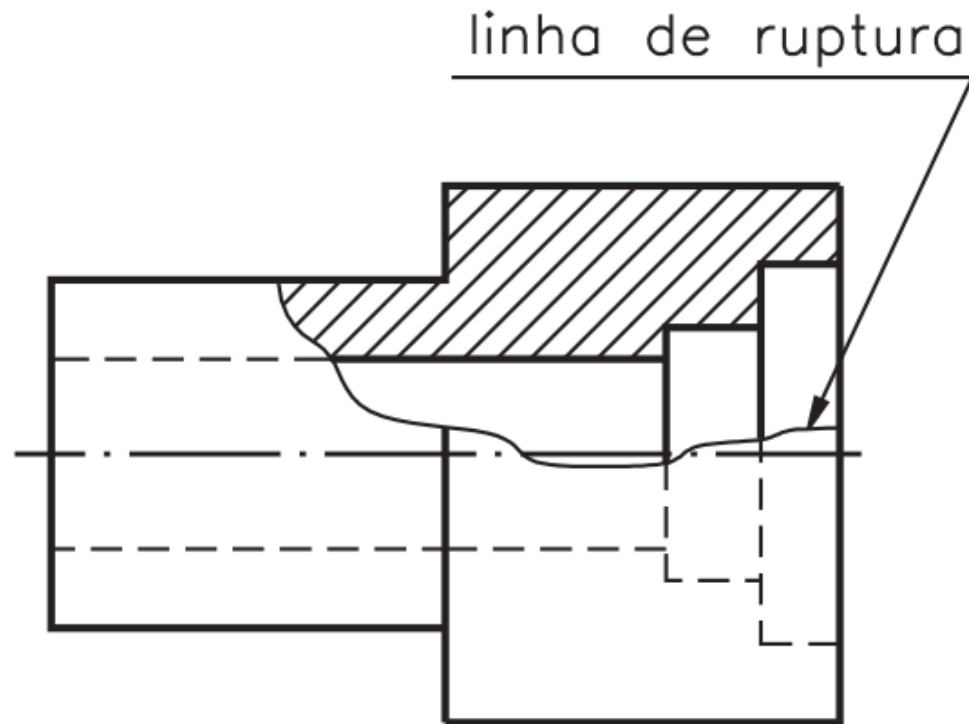
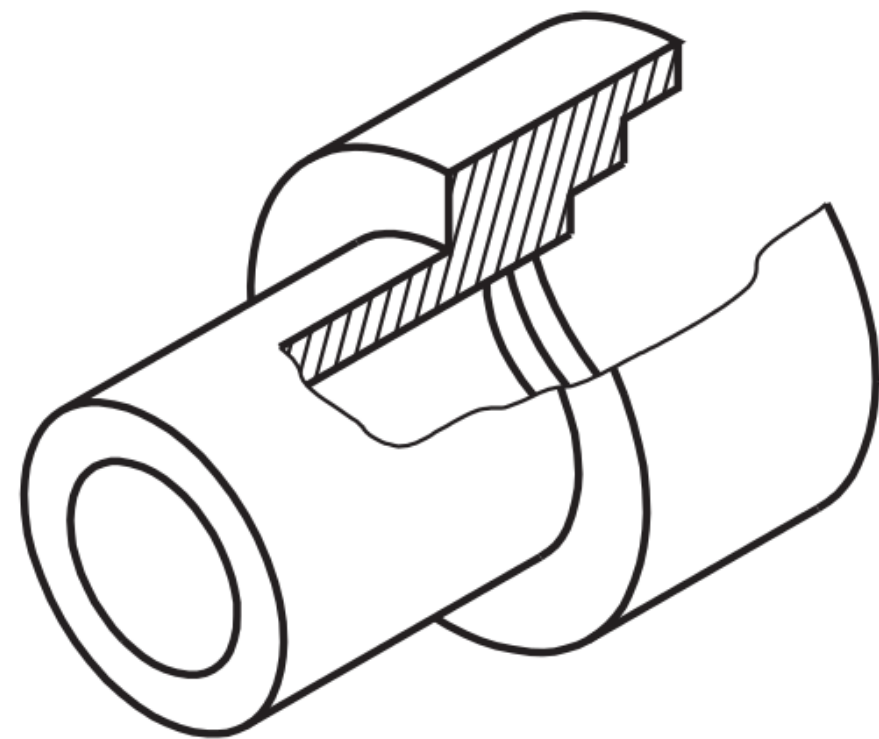
Corte parcial

Corte parcial

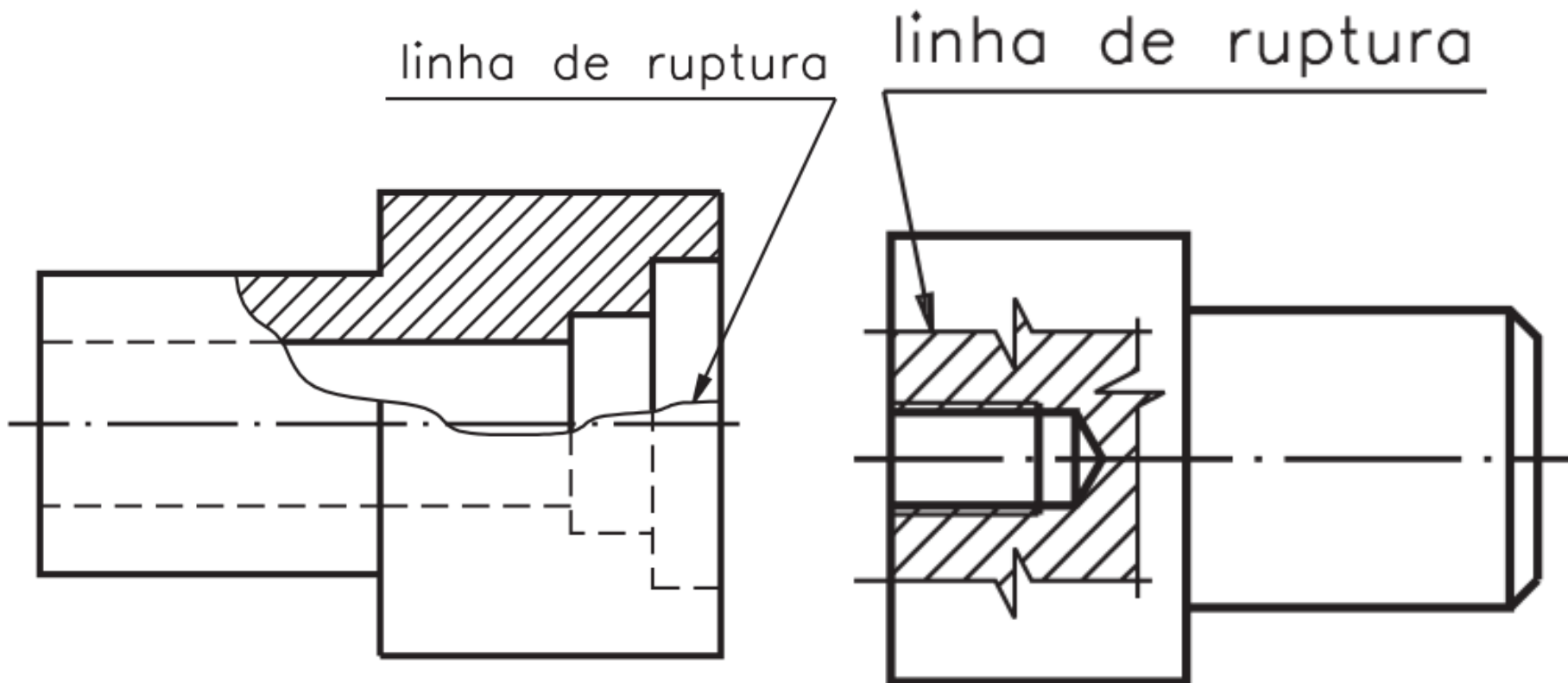
- Corte parcial:
 - Mostrando apenas detalhe de um objeto;



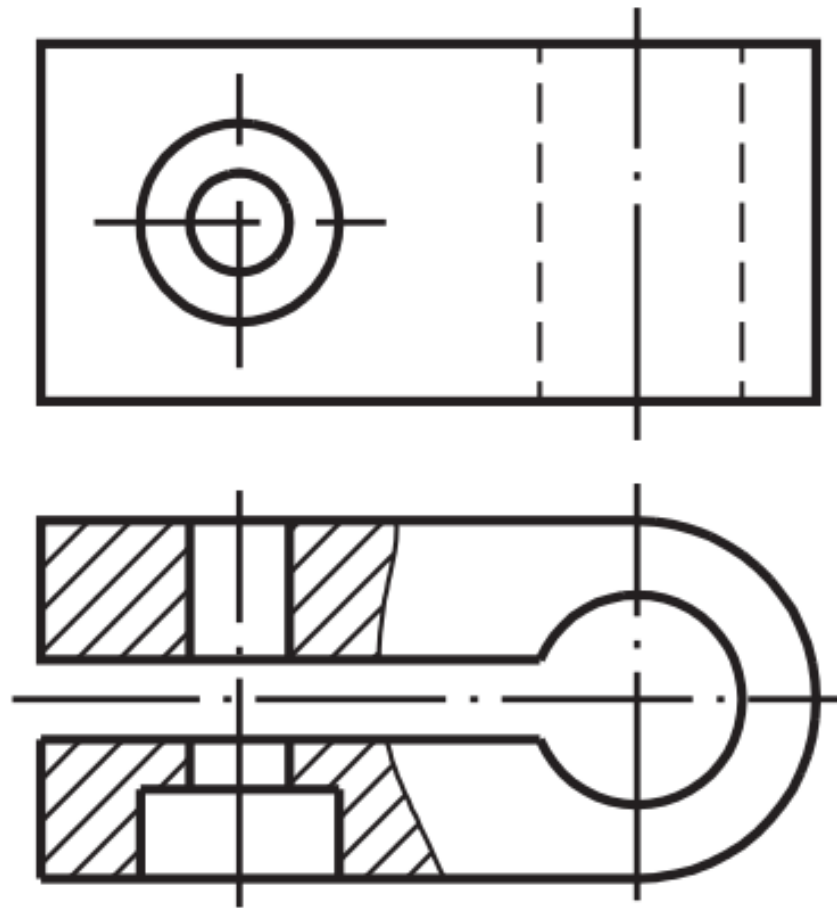
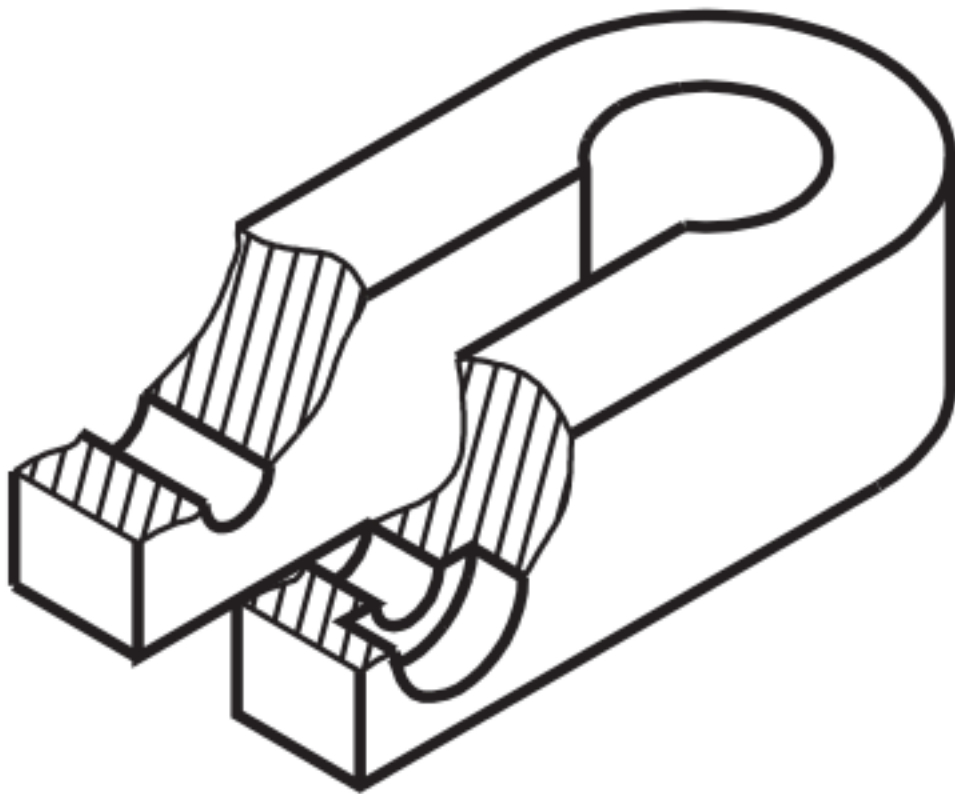
Corte parcial



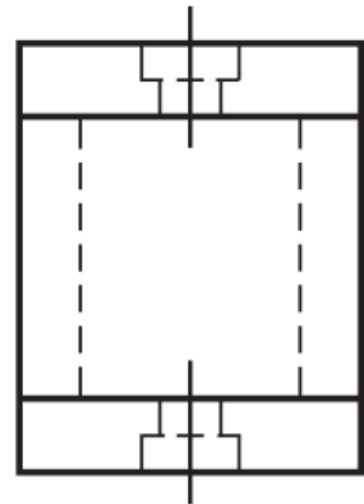
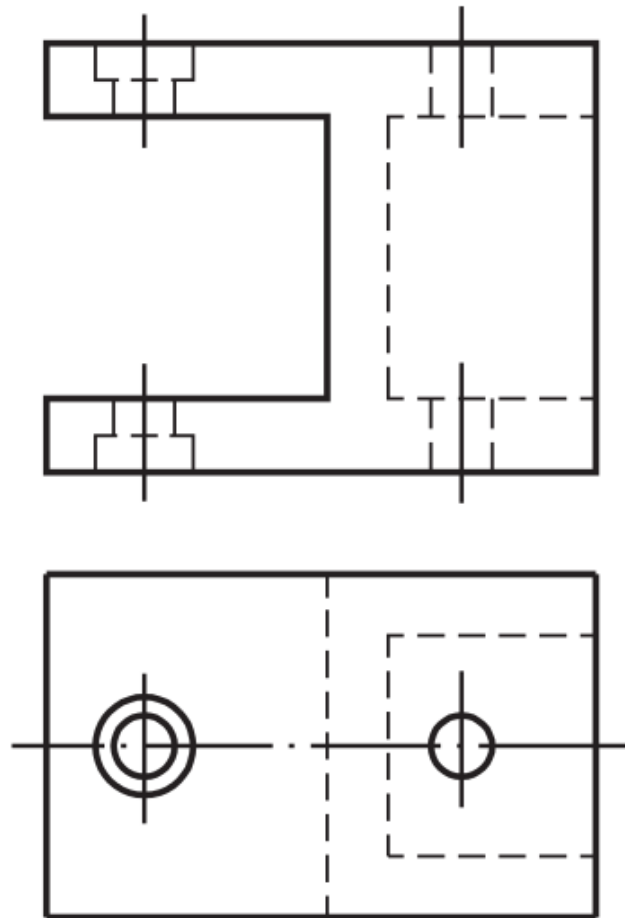
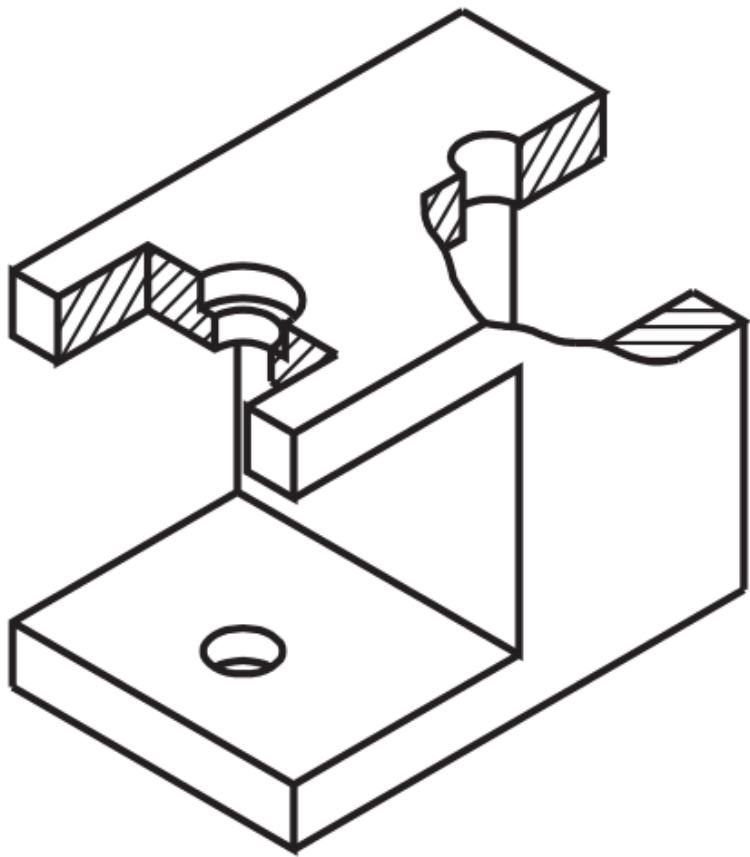
Corte parcial



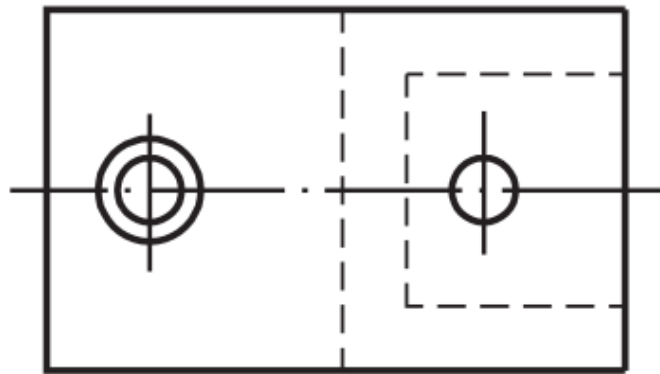
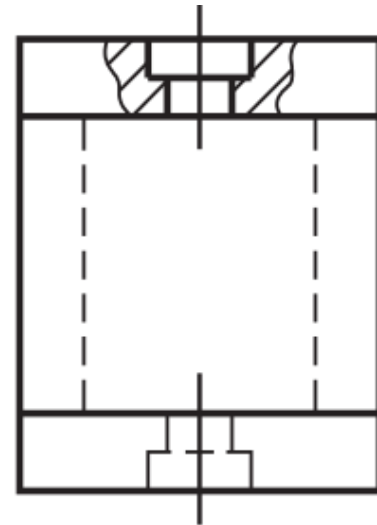
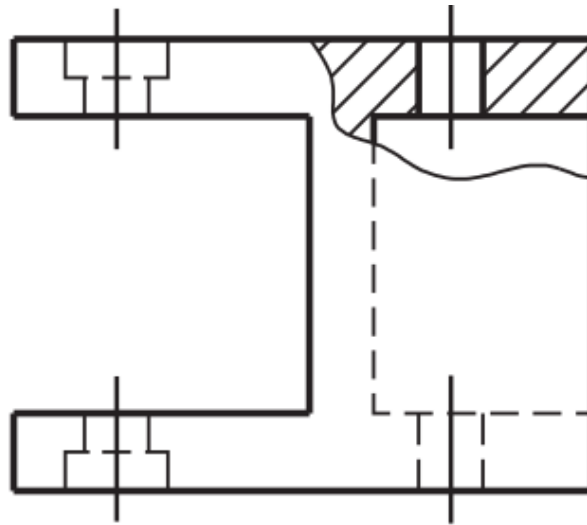
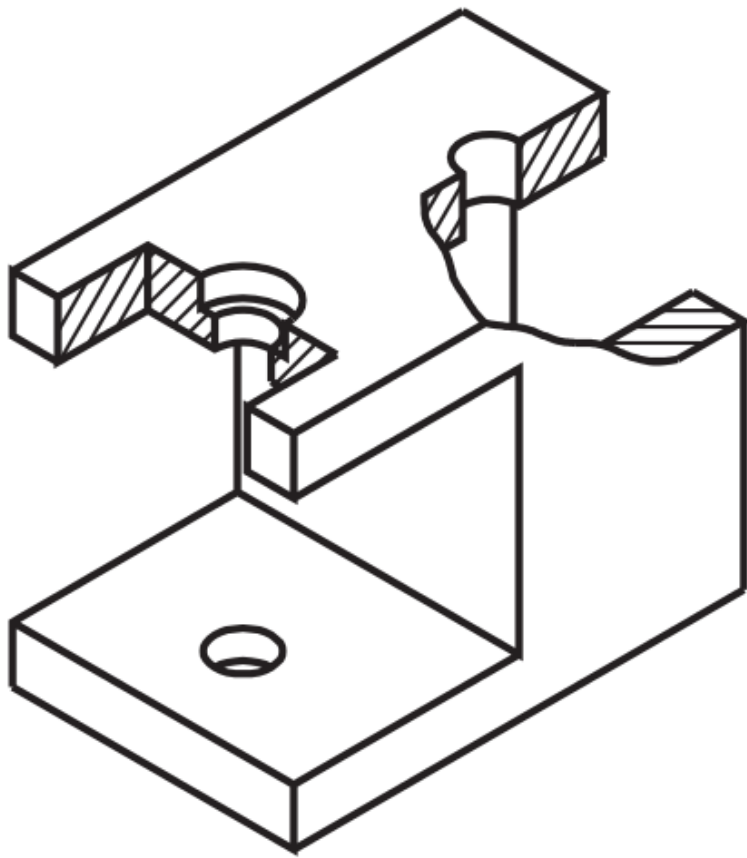
Corte parcial



Corte parcial



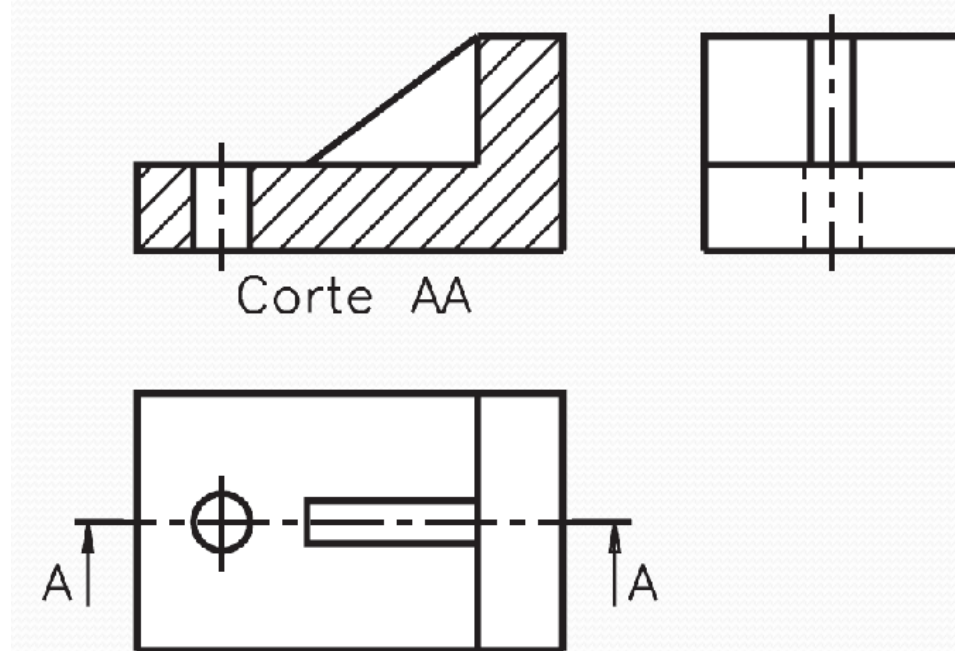
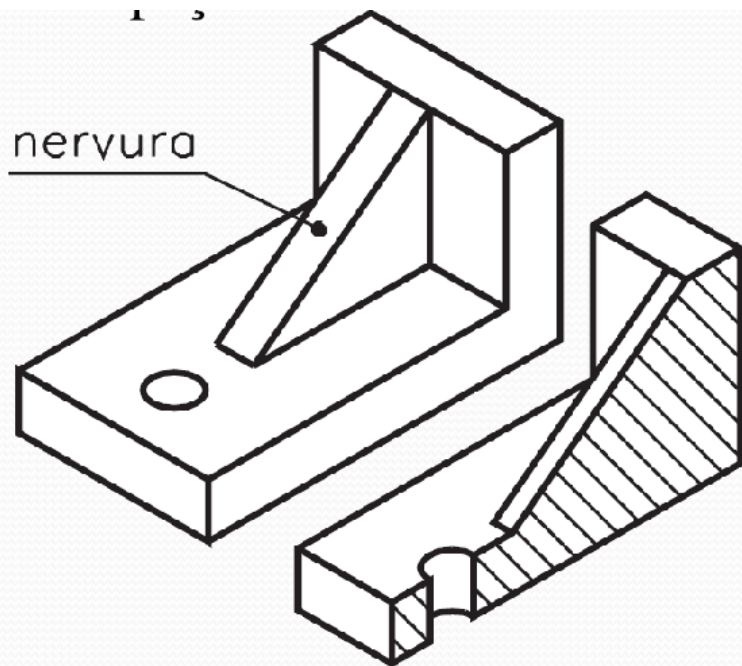
Corte parcial



Cortes – Observações

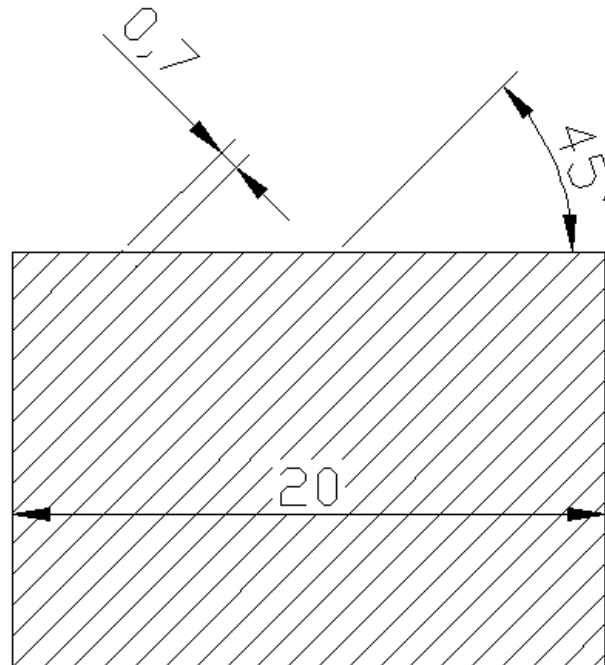
■ Nervuras:

- Evitando falsa impressão de densidade;



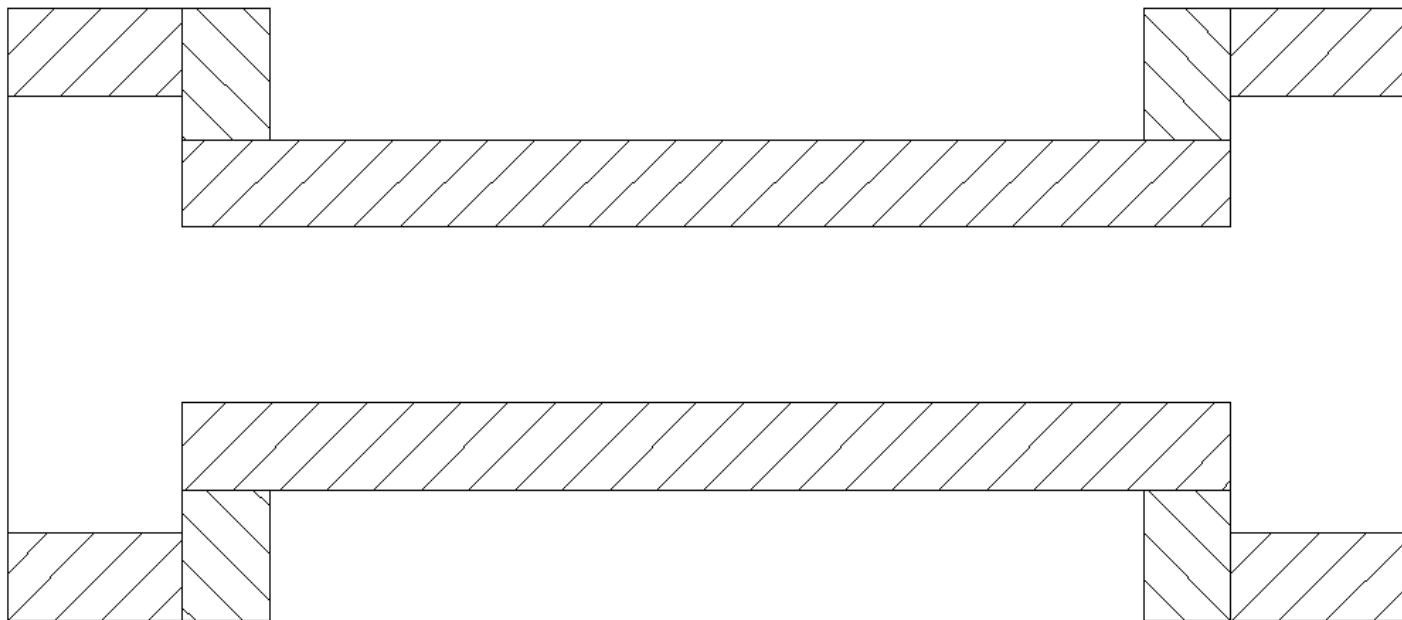
Cortes - Hachuras

- Inclinação preferível de 45
- Espaçamento mínimo 0.7mm;
- Interromper hachura em volta de textos;



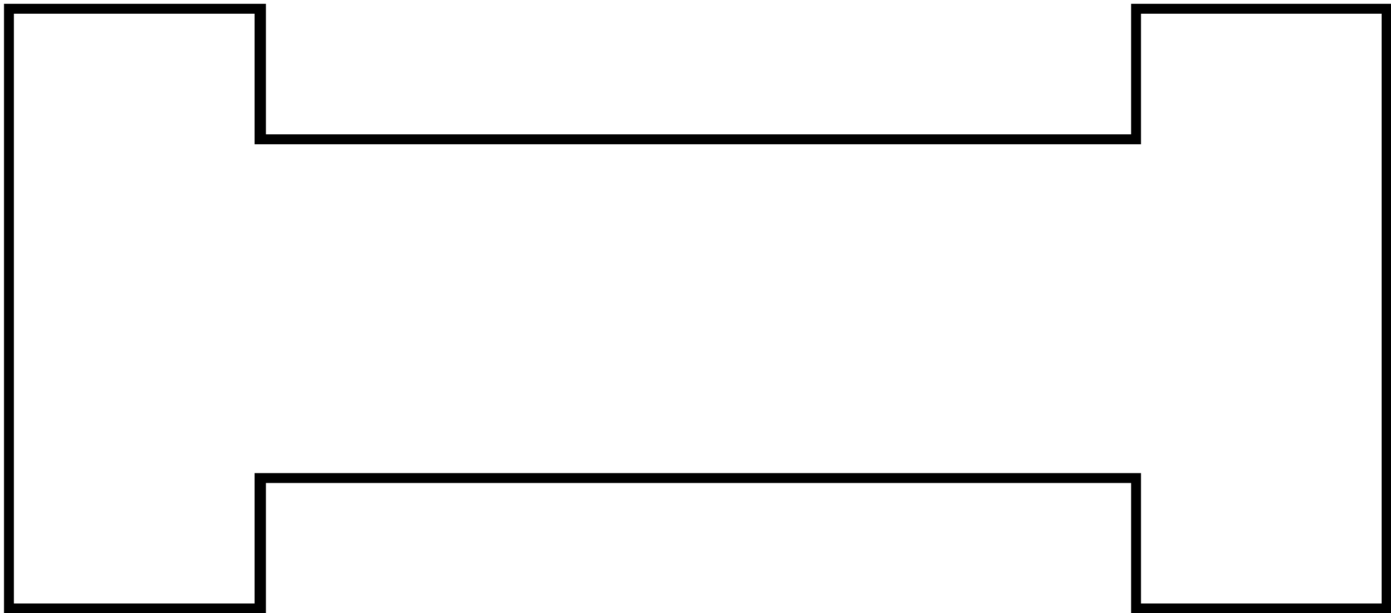
Cortes - Hachuras

- Peças adjacentes com hachuras opostas;
- Peças compostas com hachuras opostas;



Cortes - Hachuras

- Peças finas – preencher com preto;



Cortes - Hachuras

- Indicação de material:
 - Vidros / rochas;
 - Concreto;
 - Líquido;
 - Madeira;
 - Terra;